

**Aspartate Aminotransferase Antibody**  
**Rabbit Polyclonal Antibody**  
**Catalog # ALS16487****Specification**

---

**Aspartate Aminotransferase Antibody - Product Information**

Application	IHC
Primary Accession	<a href="#">P17174</a>
Reactivity	Human
Host	Rabbit
Clonality	Polyclonal
Calculated MW	46kDa KDa

**Aspartate Aminotransferase Antibody - Additional Information****Gene ID** 2805**Other Names**

Aspartate aminotransferase, cytoplasmic, cAspAT, 2.6.1.1, 2.6.1.3, Cysteine aminotransferase, cytoplasmic, Cysteine transaminase, cytoplasmic, cCAT, Glutamate oxaloacetate transaminase 1, Transaminase A, GOT1

**Target/Specificity**

Human Aspartate Aminotransferase.

**Reconstitution & Storage**

Long term: -20°C; Short term: +4°C. Avoid repeat freeze-thaw cycles.

**Precautions**

Aspartate Aminotransferase Antibody is for research use only and not for use in diagnostic or therapeutic procedures.

**Aspartate Aminotransferase Antibody - Protein Information****Name** GOT1 ([HGNC:4432](#))**Function**

Biosynthesis of L-glutamate from L-aspartate or L-cysteine (PubMed:<a href="http://www.uniprot.org/citations/21900944" target="\_blank">21900944</a>). Important regulator of levels of glutamate, the major excitatory neurotransmitter of the vertebrate central nervous system. Acts as a scavenger of glutamate in brain neuroprotection. The aspartate aminotransferase activity is involved in hepatic glucose synthesis during development and in adipocyte glyceroneogenesis. Using L-cysteine as substrate, regulates levels of mercaptopyruvate, an important source of hydrogen sulfide. Mercaptopyruvate is converted into H<sub>2</sub>S via the action of 3-mercaptopyruvate sulfurtransferase (3MST). Hydrogen sulfide is an important synaptic modulator and neuroprotectant in the brain. In addition, catalyzes (2S)-2- aminobutanoate, a by-product in the cysteine biosynthesis pathway (PubMed:<a href="http://www.uniprot.org/citations/27827456" target="\_blank">27827456</a>).

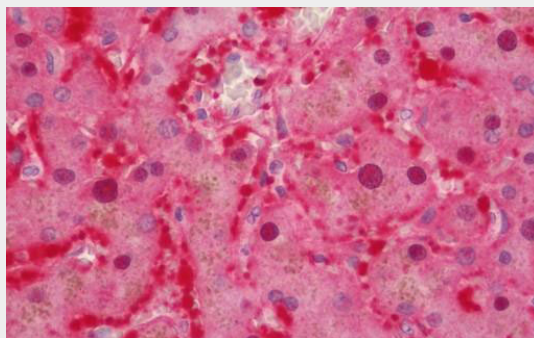
**Cellular Location**

Cytoplasm.

**Aspartate Aminotransferase Antibody - Protocols**

Provided below are standard protocols that you may find useful for product applications.

- [Western Blot](#)
- [Blocking Peptides](#)
- [Dot Blot](#)
- [Immunohistochemistry](#)
- [Immunofluorescence](#)
- [Immunoprecipitation](#)
- [Flow Cytometry](#)
- [Cell Culture](#)

**Aspartate Aminotransferase Antibody - Images**

Human Liver: Formalin-Fixed, Paraffin-Embedded (FFPE)

**Aspartate Aminotransferase Antibody - Background**

Biosynthesis of L-glutamate from L-aspartate or L- cysteine. Important regulator of levels of glutamate, the major excitatory neurotransmitter of the vertebrate central nervous system. Acts as a scavenger of glutamate in brain neuroprotection. The aspartate aminotransferase activity is involved in hepatic glucose synthesis during development and in adipocyte glyceroneogenesis. Using L-cysteine as substrate, regulates levels of mercaptopyruvate, an important source of hydrogen sulfide. Mercaptopyruvate is converted into H<sub>2</sub>S via the action of 3- mercaptopyruvate sulfurtransferase (3MST). Hydrogen sulfide is an important synaptic modulator and neuroprotectant in the brain.