

**PLAT / TPA Antibody**  
**Rabbit Polyclonal Antibody**  
**Catalog # ALS16494****Specification**

---

**PLAT / TPA Antibody - Product Information**

Application	WB, IHC-P
Primary Accession	<a href="#">P00750</a>
Reactivity	Human, Mouse, Rat
Host	Rabbit
Clonality	Polyclonal
Calculated MW	63kDa KDa
Dilution	WB~~1:1000 IHC-P~~N/A

**PLAT / TPA Antibody - Additional Information****Gene ID** 5327**Other Names**

Tissue-type plasminogen activator, t-PA, t-plasminogen activator, tPA, 3.4.21.68, Alteplase, Reteplase, Tissue-type plasminogen activator chain A, Tissue-type plasminogen activator chain B, PLAT

**Target/Specificity**

Human PLAT / TPA

**Reconstitution & Storage**

Long term: -80°C; Short term: -20°C. Avoid freeze-thaw cycles.

**Precautions**

PLAT / TPA Antibody is for research use only and not for use in diagnostic or therapeutic procedures.

**PLAT / TPA Antibody - Protein Information****Name** PLAT ([HGNC:9051](#))**Function**

Converts the abundant, but inactive, zymogen plasminogen to plasmin by hydrolyzing a single Arg-Val bond in plasminogen. By controlling plasmin-mediated proteolysis, it plays an important role in tissue remodeling and degradation, in cell migration and many other physiopathological events. During oocyte activation, plays a role in cortical granule reaction in the zona reaction, which contributes to the block to polyspermy (By similarity).

**Cellular Location**

Secreted, extracellular space.

**Tissue Location**

Synthesized in numerous tissues (including tumors) and secreted into most extracellular body fluids, such as plasma, uterine fluid, saliva, gingival crevicular fluid, tears, seminal fluid, and milk

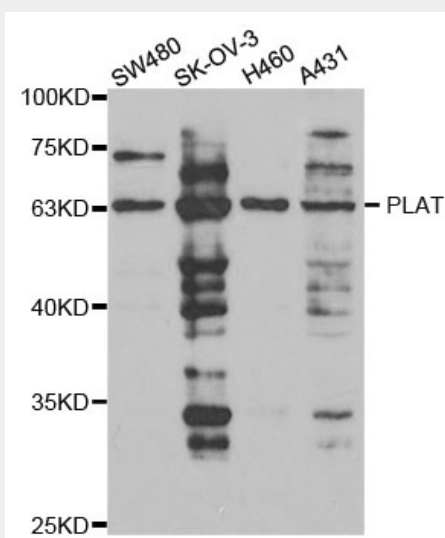
**Volume**

50  $\mu$ l

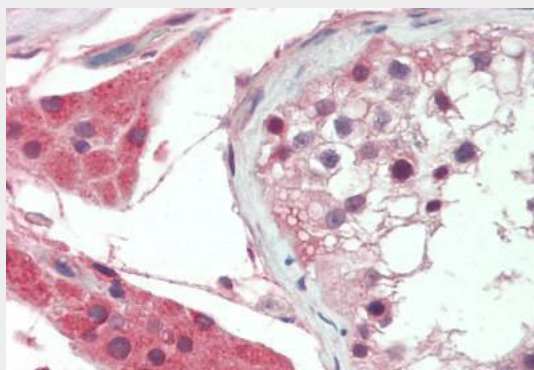
**PLAT / TPA Antibody - Protocols**

Provided below are standard protocols that you may find useful for product applications.

- [Western Blot](#)
- [Blocking Peptides](#)
- [Dot Blot](#)
- [Immunohistochemistry](#)
- [Immunofluorescence](#)
- [Immunoprecipitation](#)
- [Flow Cytometry](#)
- [Cell Culture](#)

**PLAT / TPA Antibody - Images**

Western blot analysis of extracts of various cell lines, using PLAT antibody.



Human Testis: Formalin-Fixed, Paraffin-Embedded (FFPE)

**PLAT / TPA Antibody - Background**

Converts the abundant, but inactive, zymogen plasminogen to plasmin by hydrolyzing a single Arg-Val bond in plasminogen. By controlling plasmin-mediated proteolysis, it plays an important role in tissue remodeling and degradation, in cell migration and many other physiopathological events. Plays a direct role in facilitating neuronal migration.