

TSAP6 / STEAP3 Antibody
Rabbit Polyclonal Antibody
Catalog # ALS16503**Specification**

TSAP6 / STEAP3 Antibody - Product Information

Application	IHC
Primary Accession	Q658P3
Reactivity	Human, Mouse, Rat
Host	Rabbit
Clonality	Polyclonal
Calculated MW	55kDa KDa

TSAP6 / STEAP3 Antibody - Additional Information**Gene ID** 55240**Other Names**

Metalloreductase STEAP3, 1.16.1.-, Dudulin-2, Six-transmembrane epithelial antigen of prostate 3, Tumor suppressor-activated pathway protein 6, hTSAP6, pHyde, hpHyde, STEAP3, TSAP6

Target/Specificity

Human TSAP6 / STEAP3

Reconstitution & Storage

Store at 4°C short term. Aliquot and store at -20°C long term. Avoid freeze-thaw cycles.

Precautions

TSAP6 / STEAP3 Antibody is for research use only and not for use in diagnostic or therapeutic procedures.

TSAP6 / STEAP3 Antibody - Protein Information**Name** STEAP3**Synonyms** TSAP6**Function**

Integral membrane protein that functions as a NADPH-dependent ferric-chelate reductase, using NADPH from one side of the membrane to reduce a Fe(3+) chelate that is bound on the other side of the membrane (PubMed: <http://www.uniprot.org/citations/26205815> target="_blank">26205815). Mediates sequential transmembrane electron transfer from NADPH to FAD and onto heme, and finally to the Fe(3+) chelate (By similarity). Can also reduce Cu(2+) to Cu(1+) (By similarity). Mediates efficient transferrin-dependent iron uptake in erythroid cells (By similarity). May play a role downstream of p53/TP53 to interface apoptosis and cell cycle progression (By similarity). Indirectly involved in exosome secretion by facilitating the secretion of proteins such as TCTP (PubMed: <http://www.uniprot.org/citations/15319436> target="_blank">15319436, PubMed: <http://www.uniprot.org/citations/16651434>

target="_blank">16651434).

Cellular Location

Endosome membrane {ECO:0000250|UniProtKB:Q8CI59}; Multi-pass membrane protein.

Note=Localizes to vesicular- like structures at the plasma membrane and around the nucleus

Tissue Location

Expressed in adult bone marrow, placenta, liver, skeletal muscle and pancreas. Down-regulated in hepatocellular carcinoma.

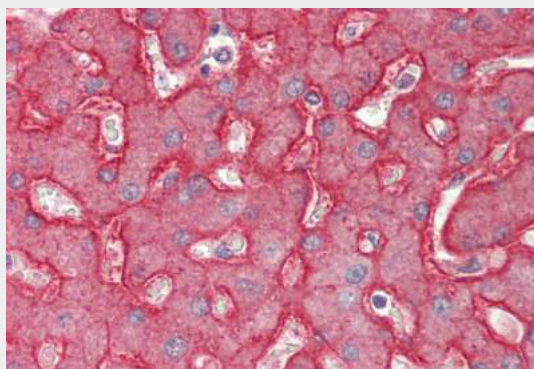
Volume

50 μ l

TSAP6 / STEAP3 Antibody - Protocols

Provided below are standard protocols that you may find useful for product applications.

- [Western Blot](#)
- [Blocking Peptides](#)
- [Dot Blot](#)
- [Immunohistochemistry](#)
- [Immunofluorescence](#)
- [Immunoprecipitation](#)
- [Flow Cytometry](#)
- [Cell Culture](#)

TSAP6 / STEAP3 Antibody - Images

Human Liver: Formalin-Fixed, Paraffin-Embedded (FFPE)

TSAP6 / STEAP3 Antibody - Background

Endosomal ferrireductase required for efficient transferrin-dependent iron uptake in erythroid cells. Participates in erythroid iron homeostasis by reducing Fe(3+) to Fe(2+). Can also reduce of Cu(2+) to Cu(1+), suggesting that it participates in copper homeostasis. Uses NADP(+) as acceptor. May play a role downstream of p53/TP53 to interface apoptosis and cell cycle progression. Indirectly involved in exosome secretion by facilitating the secretion of proteins such as TCTP.