

CAV2 / Caveolin 2 Antibody
Goat Polyclonal Antibody
Catalog # ALS16509**Specification**

CAV2 / Caveolin 2 Antibody - Product Information

Application	IHC, WB
Primary Accession	P51636
Reactivity	Human, Mouse, Dog
Host	Goat
Clonality	Polyclonal
Calculated MW	18kDa KDa

CAV2 / Caveolin 2 Antibody - Additional Information**Gene ID** 858**Other Names**

Caveolin-2, CAV2

Target/Specificity

Detects a band of approximately 20 kDa by Western blot in HaCat cell lysate and 45 kDa CAV2-GFP transfected cell lysate. This Ab does not recognize CAV1.

Reconstitution & Storage

Store at 4C short term. Aliquot and store at -20C long term. Avoid freeze-thaw cycles.

Precautions

CAV2 / Caveolin 2 Antibody is for research use only and not for use in diagnostic or therapeutic procedures.

CAV2 / Caveolin 2 Antibody - Protein Information**Name** CAV2**Function**

May act as a scaffolding protein within caveolar membranes. Interacts directly with G-protein alpha subunits and can functionally regulate their activity. Acts as an accessory protein in conjunction with CAV1 in targeting to lipid rafts and driving caveolae formation. The Ser-36 phosphorylated form has a role in modulating mitosis in endothelial cells. Positive regulator of cellular mitogenesis of the MAPK signaling pathway. Required for the insulin-stimulated nuclear translocation and activation of MAPK1 and STAT3, and the subsequent regulation of cell cycle progression (By similarity).

Cellular Location

Nucleus. Cytoplasm. Golgi apparatus membrane; Peripheral membrane protein. Cell membrane; Peripheral membrane protein. Membrane, caveola; Peripheral membrane protein. Note=Potential hairpin-like structure in the membrane. Membrane protein of caveolae Tyr-19-phosphorylated form

is enriched at sites of cell-cell contact and is translocated to the nucleus in complex with MAPK1 in response to insulin (By similarity). Tyr-27-phosphorylated form is located both in the cytoplasm and plasma membrane. CAV1-mediated Ser-23-phosphorylated form locates to the plasma membrane. Ser-36-phosphorylated form resides in intracellular compartments.

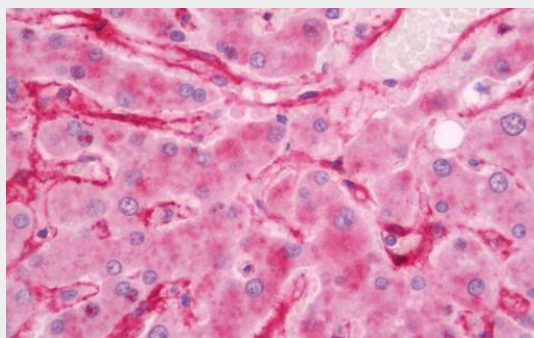
Tissue Location

Expressed in endothelial cells, smooth muscle cells, skeletal myoblasts and fibroblasts

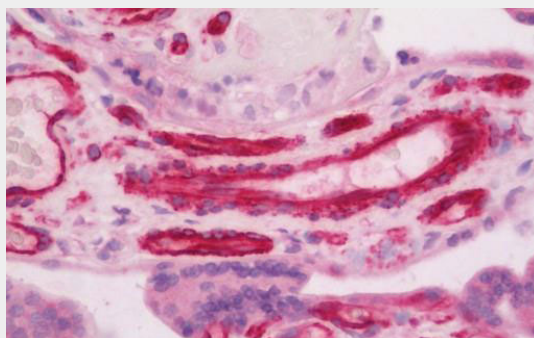
CAV2 / Caveolin 2 Antibody - Protocols

Provided below are standard protocols that you may find useful for product applications.

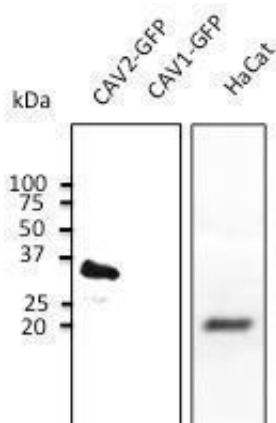
- [Western Blot](#)
- [Blocking Peptides](#)
- [Dot Blot](#)
- [Immunohistochemistry](#)
- [Immunofluorescence](#)
- [Immunoprecipitation](#)
- [Flow Cytometry](#)
- [Cell Culture](#)

CAV2 / Caveolin 2 Antibody - Images

Human Liver: Formalin-Fixed, Paraffin-Embedded (FFPE)



Human Placenta: Formalin-Fixed, Paraffin-Embedded (FFPE)



Anti-CAV pAb at 1:1000 dilution.

CAV2 / Caveolin 2 Antibody - Background

May act as a scaffolding protein within caveolar membranes. Interacts directly with G-protein alpha subunits and can functionally regulate their activity. Acts as an accessory protein in conjunction with CAV1 in targeting to lipid rafts and driving caveolae formation. The Ser-36 phosphorylated form has a role in modulating mitosis in endothelial cells. Positive regulator of cellular mitogenesis of the MAPK signaling pathway. Required for the insulin-stimulated nuclear translocation and activation of MAPK1 and STAT3, and the subsequent regulation of cell cycle progression (By similarity).