

**ESA / EPCAM Antibody (clone VU1D9)**  
**Mouse Monoclonal Antibody**  
**Catalog # ALS16516****Specification**

---

**ESA / EPCAM Antibody (clone VU1D9) - Product Information**

Application	WB, IHC-P, ICC, IHC-F, FC
Primary Accession	<a href="#">P16422</a>
Other Accession	<a href="#">4072</a>
Reactivity	Human
Host	Mouse
Clonality	Monoclonal
Isotype	IgG1
Calculated MW	34932
Dilution	WB~~1:1000 IHC-P~~N/A ICC~~N/A IHC-F~~N/A FC~~1:10~50

**ESA / EPCAM Antibody (clone VU1D9) - Additional Information****Gene ID** 4072**Other Names**

EPCAM, 323/A3, ACSTD1, 17-1A, CD326, EGP, EGP34, Epithelial glycoprotein, GA733-2, HNPCC8, Ep-CAM, ESA, HEGP314, KS 1/4 antigen, KS1/4, KSA, M1S2, MIC18, MK-1, MH99, TROP1, TACST-1, TACSTD1, CD326 antigen, CO-17A, DIAR5, EGP-2, EGP314, EGP40, Epithel ...

**Target/Specificity**

Reacts with the first EGF repeat in the extracellular domain of Ep-CAM. The epitope is sensitive for reducing agents. Detects Ep-CAM in most simple, pseudostratified and transitional epithelia and in the majority of human carcinomas.

**Reconstitution & Storage**

PBS containing 0.09% sodium azide. Short term 4°C, long term aliquot and store at -20°C, avoid freeze thaw cycles. Store undiluted.

**Precautions**

ESA / EPCAM Antibody (clone VU1D9) is for research use only and not for use in diagnostic or therapeutic procedures.

**ESA / EPCAM Antibody (clone VU1D9) - Protein Information****Name** EPCAM**Synonyms** GA733-2, M1S2, M4S1, MIC18, TACSTD1, TRO

**Function**

May act as a physical homophilic interaction molecule between intestinal epithelial cells (IECs) and intraepithelial lymphocytes (IELs) at the mucosal epithelium for providing immunological barrier as a first line of defense against mucosal infection. Plays a role in embryonic stem cells proliferation and differentiation. Up-regulates the expression of FABP5, MYC and cyclins A and E.

**Cellular Location**

Lateral cell membrane; Single-pass type I membrane protein. Cell junction, tight junction.

Note=Colocalizes with CLDN7 at the lateral cell membrane and tight junction

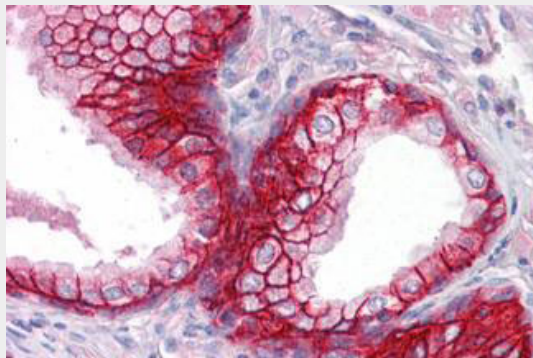
**Tissue Location**

Highly and selectively expressed by undifferentiated rather than differentiated embryonic stem cells (ESC) Levels rapidly diminish as soon as ESC's differentiate (at protein levels). Expressed in almost all epithelial cell membranes but not on mesodermal or neural cell membranes. Found on the surface of adenocarcinoma.

**ESA / EPCAM Antibody (clone VU1D9) - Protocols**

Provided below are standard protocols that you may find useful for product applications.

- [Western Blot](#)
- [Blocking Peptides](#)
- [Dot Blot](#)
- [Immunohistochemistry](#)
- [Immunofluorescence](#)
- [Immunoprecipitation](#)
- [Flow Cytometry](#)
- [Cell Culture](#)

**ESA / EPCAM Antibody (clone VU1D9) - Images**

Anti-EPCAM antibody IHC of human prostate.

**ESA / EPCAM Antibody (clone VU1D9) - Background**

May act as a physical homophilic interaction molecule between intestinal epithelial cells (IECs) and intraepithelial lymphocytes (IELs) at the mucosal epithelium for providing immunological barrier as a first line of defense against mucosal infection. Plays a role in embryonic stem cells proliferation and differentiation. Up-regulates the expression of FABP5, MYC and cyclins A and E.

**ESA / EPCAM Antibody (clone VU1D9) - References**

Strnad J., et al. Cancer Res. 49:314-317(1989).

Perez M.S.,et al.J. Immunol. 142:3662-3667(1989).  
Simon B.,et al.Proc. Natl. Acad. Sci. U.S.A. 87:2755-2759(1990).  
Szala S.,et al.Proc. Natl. Acad. Sci. U.S.A. 87:3542-3546(1990).  
Linnenbach A.J.,et al.Mol. Cell. Biol. 13:1507-1515(1993).