

CD27 Antibody (clone LG.3A10)
Hamster Monoclonal Antibody
Catalog # ALS16523**Specification**

CD27 Antibody (clone LG.3A10) - Product Information

| | |
|-------------------|--|
| Application | IHC-P, E, IP, FC |
| Primary Accession | P26842 |
| Other Accession | 939 |
| Reactivity | Human, Mouse |
| Host | Hamster |
| Clonality | Monoclonal |
| Isotype | IgG |
| Calculated MW | 29137 |
| Dilution | IHC-P~~N/A E~~N/A IP~~N/A FC~~1:10~50 |

CD27 Antibody (clone LG.3A10) - Additional Information**Gene ID** 939**Other Names**

CD27, CD27 antigen, CD27 molecule, S152, T14, T-cell activation antigen CD27, CD27L receptor, T cell activation antigen S152, TNFRSF7, Tp55

Target/Specificity

Cross-reacts with human CD27.

Reconstitution & Storage

PBS containing 0.09% sodium azide. Short term 4°C, long term aliquot and store at -20°C, avoid freeze thaw cycles. Store undiluted.

Precautions

CD27 Antibody (clone LG.3A10) is for research use only and not for use in diagnostic or therapeutic procedures.

CD27 Antibody (clone LG.3A10) - Protein Information**Name** CD27 ([HGNC:11922](#))**Function**

Costimulatory immune-checkpoint receptor expressed at the surface of T-cells, NK-cells and B-cells which binds to and is activated by its ligand CD70/CD27L expressed by B-cells (PubMed:28011863). The CD70-CD27 signaling pathway mediates antigen- specific T-cell activation and expansion which in turn provides immune surveillance of B-cells (PubMed:28011863). Mechanistically, CD70 ligation activates the TRAF2-PTPN6 axis that subsequently inhibits LCK phosphorylation to promote phenotypic and transcriptional adaptations of T-cell memory (PubMed:38354704). In addition, activation by CD70 on early progenitor cells provides a negative feedback signal to leukocyte differentiation during immune activation and thus modulates hematopoiesis (By similarity). Negatively regulates the function of Th2 lymphocytes in the adipose tissue (By similarity).

Cellular Location

Cell membrane; Single-pass type I membrane protein

Tissue Location

Found in most T-lymphocytes.

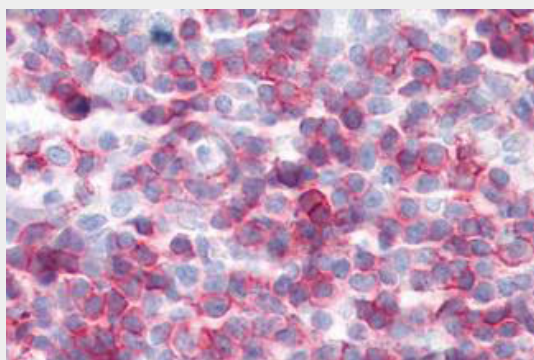
Volume

50 µl

CD27 Antibody (clone LG.3A10) - Protocols

Provided below are standard protocols that you may find useful for product applications.

- [Western Blot](#)
- [Blocking Peptides](#)
- [Dot Blot](#)
- [Immunohistochemistry](#)
- [Immunofluorescence](#)
- [Immunoprecipitation](#)
- [Flow Cytometry](#)
- [Cell Culture](#)

CD27 Antibody (clone LG.3A10) - Images

Anti-CD27 antibody IHC of human tonsil.

CD27 Antibody (clone LG.3A10) - Background

Receptor for CD70/CD27L. May play a role in survival of activated T-cells. May play a role in apoptosis through association with SIVA1.

CD27 Antibody (clone LG.3A10) - References

Camerini D., et al. J. Immunol. 147:3165-3169(1991).

Loenen W.A.,et al.J. Immunol. 149:3937-3943(1992).
Ota T.,et al.Nat. Genet. 36:40-45(2004).
Scherer S.E.,et al.Nature 440:346-351(2006).
Zhang Z.,et al.Protein Sci. 13:2819-2824(2004).