

**EMA / MUC1 Antibody (clone 175C5)**  
**Mouse Monoclonal Antibody**  
**Catalog # ALS16529****Specification**

---

**EMA / MUC1 Antibody (clone 175C5) - Product Information**

Application	IHC
Primary Accession	<a href="#">P15941</a>
Other Accession	<a href="#">4582</a>
Reactivity	Human
Host	Mouse
Clonality	Monoclonal
Isotype	IgG1
Calculated MW	122102

**EMA / MUC1 Antibody (clone 175C5) - Additional Information****Gene ID** 4582**Other Names**

MUC1, CA15-3, CD227, Carcinoma-associated mucin, CD227 antigen, DF3 antigen, Episialin, Epithelial membrane antigen, H23 antigen, H23AG, Krebs von den Lungen-6, MAM6, MUC1/ZD, MUC-1/SEC, Mucin-1, Pem, KL-6, MUC-1/X, Tumor-associated mucin, Peanut-rea ...

**Target/Specificity**

shows a high preference for breast carcinomas relative to normal breast epithelium. The antibody reacts with a carcinoma-associated antigen in both adenocarcinomas and squamous cell carcinomas of different origins.

**Reconstitution & Storage**

PBS containing 0.09% sodium azide. Short term 4°C, long term aliquot and store at -20°C, avoid freeze thaw cycles.

**Precautions**

EMA / MUC1 Antibody (clone 175C5) is for research use only and not for use in diagnostic or therapeutic procedures.

**EMA / MUC1 Antibody (clone 175C5) - Protein Information****Name** MUC1**Synonyms** PUM**Function**

The alpha subunit has cell adhesive properties. Can act both as an adhesion and an anti-adhesion protein. May provide a protective layer on epithelial cells against bacterial and enzyme attack.

**Cellular Location**

Apical cell membrane; Single-pass type I membrane protein. Note=Exclusively located in the apical domain of the plasma membrane of highly polarized epithelial cells After endocytosis, internalized and recycled to the cell membrane Located to microvilli and to the tips of long filopodial protusions [Isoform Y]: Secreted. [Mucin-1 subunit beta]: Cell membrane. Cytoplasm. Nucleus. Note=On EGF and PDGFRB stimulation, transported to the nucleus through interaction with CTNNB1, a process which is stimulated by phosphorylation. On HRG stimulation, colocalizes with JUP/gamma-catenin at the nucleus

#### **Tissue Location**

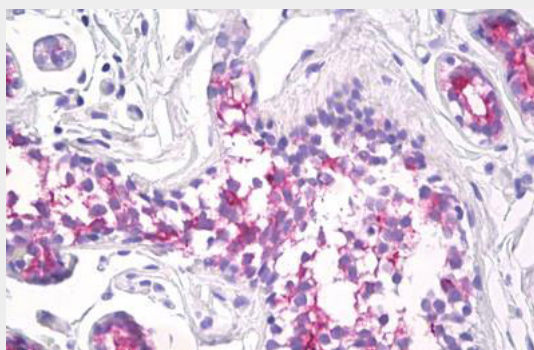
Expressed on the apical surface of epithelial cells, especially of airway passages, breast and uterus. Also expressed in activated and unactivated T-cells. Overexpressed in epithelial tumors, such as breast or ovarian cancer and also in non-epithelial tumor cells. Isoform Y is expressed in tumor cells only

#### **EMA / MUC1 Antibody (clone 175C5) - Protocols**

Provided below are standard protocols that you may find useful for product applications.

- [Western Blot](#)
- [Blocking Peptides](#)
- [Dot Blot](#)
- [Immunohistochemistry](#)
- [Immunofluorescence](#)
- [Immunoprecipitation](#)
- [Flow Cytometry](#)
- [Cell Culture](#)

#### **EMA / MUC1 Antibody (clone 175C5) - Images**



Anti-MUC1 antibody IHC of human breast.

#### **EMA / MUC1 Antibody (clone 175C5) - Background**

The alpha subunit has cell adhesive properties. Can act both as an adhesion and an anti-adhesion protein. May provide a protective layer on epithelial cells against bacterial and enzyme attack.

#### **EMA / MUC1 Antibody (clone 175C5) - References**

Lan M.S.,et al.J. Biol. Chem. 265:15294-15299(1990).  
Ligtenberg M.J.L.,et al.J. Biol. Chem. 265:5573-5578(1990).  
Gendler S.J.,et al.J. Biol. Chem. 265:15286-15293(1990).  
Lancaster C.A.,et al.Biochem. Biophys. Res. Commun. 173:1019-1029(1990).  
Wreschner D.H.,et al.Eur. J. Biochem. 189:463-473(1990).

