

**MUC16 / CA125 Antibody (Extracellular Domain, clone X325)**  
**Mouse Monoclonal Antibody**  
**Catalog # ALS16561****Specification**

---

**MUC16 / CA125 Antibody (Extracellular Domain, clone X325) - Product Information**

Application	WB, IHC-P, E
Primary Accession	<a href="#">Q8WXI7</a>
Other Accession	<a href="#">94025</a>
Reactivity	Human
Host	Mouse
Clonality	Monoclonal
Isotype	IgG1
Calculated MW	1519175
Dilution	WB~~1:1000 IHC-P~~N/A E~~N/A

**MUC16 / CA125 Antibody (Extracellular Domain, clone X325) - Additional Information**

**Gene ID** 94025

**Other Names**

MUC16, CA125 ovarian cancer antigen, CA125, CA-125, MUC-16, Mucin-16

**Target/Specificity**

Recognizes the ovarian cancer mucin CA125 (also known as MUC16). CA125 consists of a short cytoplasmic tail, a transmembrane domain and an exceptionally large glycosylated extracellular domain. The extracellular domain is dominated by a large number ...

**Reconstitution & Storage**

Tris buffered saline, 0.09% sodium azide. Long term: -20°C; Short term: +4°C. Avoid repeat freeze-thaw cycles.

**Precautions**

MUC16 / CA125 Antibody (Extracellular Domain, clone X325) is for research use only and not for use in diagnostic or therapeutic procedures.

**MUC16 / CA125 Antibody (Extracellular Domain, clone X325) - Protein Information**

**Name** MUC16 ([HGNC:15582](#))

**Function**

Thought to provide a protective, lubricating barrier against particles and infectious agents at mucosal surfaces.

**Cellular Location**

Cell membrane; Single-pass type I membrane protein. Secreted, extracellular space. Note=May be

liberated into the extracellular space following the phosphorylation of the intracellular C-terminus which induces the proteolytic cleavage and liberation of the extracellular domain

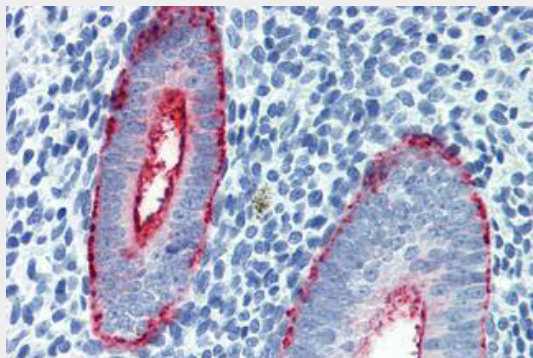
**Tissue Location**

Expressed in corneal and conjunctival epithelia (at protein level). Overexpressed in ovarian carcinomas and ovarian low malignant potential (LMP) tumors as compared to the expression in normal ovarian tissue and ovarian adenomas

**MUC16 / CA125 Antibody (Extracellular Domain, clone X325) - Protocols**

Provided below are standard protocols that you may find useful for product applications.

- [Western Blot](#)
- [Blocking Peptides](#)
- [Dot Blot](#)
- [Immunohistochemistry](#)
- [Immunofluorescence](#)
- [Immunoprecipitation](#)
- [Flow Cytometry](#)
- [Cell Culture](#)

**MUC16 / CA125 Antibody (Extracellular Domain, clone X325) - Images**

Anti-MUC16 / CA125 antibody IHC staining of human uterus.

**MUC16 / CA125 Antibody (Extracellular Domain, clone X325) - Background**

Thought to provide a protective, lubricating barrier against particles and infectious agents at mucosal surfaces.

**MUC16 / CA125 Antibody (Extracellular Domain, clone X325) - References**

- O'Brien T.J., et al. Tumor Biol. 23:154-169(2002).  
O'Brien T.J., et al. Tumor Biol. 22:348-366(2001).  
Yin B.W.T., et al. J. Biol. Chem. 276:27371-27375(2001).  
Lloyd K.O., et al. Submitted (SEP-2003) to the EMBL/GenBank/DDBJ databases.  
Ota T., et al. Nat. Genet. 36:40-45(2004).