

ADAM19 Antibody
Rabbit Polyclonal Antibody
Catalog # ALS16567**Specification**

ADAM19 Antibody - Product Information

Application	WB, IHC-P
Primary Accession	O9H013
Other Accession	8728
Reactivity	Human
Host	Rabbit
Clonality	Polyclonal
Isotype	IgG
Calculated MW	104997
Dilution	WB~~1:1000 IHC-P~~N/A

ADAM19 Antibody - Additional Information**Gene ID** 8728**Other Names**

ADAM19, ADAM 19, FKSG34, Meltrin beta, Meltrin-beta, MLTNB, MADDAM

Target/Specificity

Not tested with other proteins.

Reconstitution & Storage

PBS, pH 7.4, 0.05% sodium azide. Store at -20°C for up to one year.

Precautions

ADAM19 Antibody is for research use only and not for use in diagnostic or therapeutic procedures.

ADAM19 Antibody - Protein Information**Name** ADAM19**Synonyms** MLTNB**Function**

Participates in the proteolytic processing of beta-type neuregulin isoforms which are involved in neurogenesis and synaptogenesis, suggesting a regulatory role in glial cell. Also cleaves alpha-2 macroglobulin. May be involved in osteoblast differentiation and/or osteoblast activity in bone (By similarity).

Cellular Location

Membrane; Single-pass type I membrane protein.

Tissue Location

Expressed in many normal organ tissues and several cancer cell lines

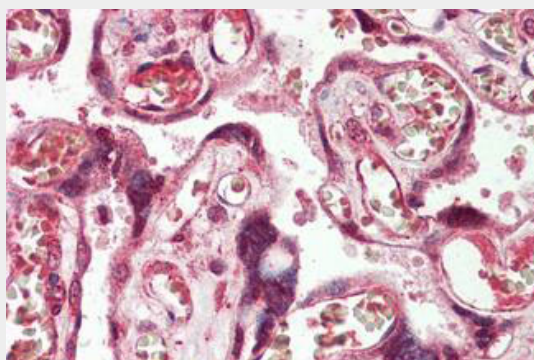
Volume

50 μ l

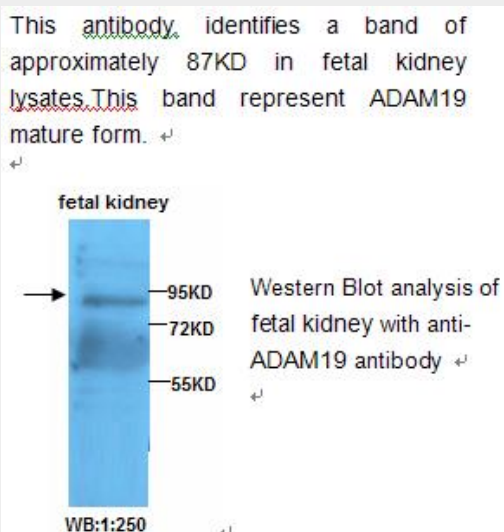
ADAM19 Antibody - Protocols

Provided below are standard protocols that you may find useful for product applications.

- [Western Blot](#)
- [Blocking Peptides](#)
- [Dot Blot](#)
- [Immunohistochemistry](#)
- [Immunofluorescence](#)
- [Immunoprecipitation](#)
- [Flow Cytometry](#)
- [Cell Culture](#)

ADAM19 Antibody - Images

Human Placenta: Formalin-Fixed, Paraffin-Embedded (FFPE)



This antibody, identifies a band of approximately 87kD in fetal kidney lysates. This band represents ADAM19 mature form.

ADAM19 Antibody - Background

Participates in the proteolytic processing of beta-type neuregulin isoforms which are involved in neurogenesis and synaptogenesis, suggesting a regulatory role in glial cell. Also cleaves alpha-2 macroglobulin. May be involved in osteoblast differentiation and/or osteoblast activity in bone (By similarity).

ADAM19 Antibody - References

Wang Y.-G.,et al.Submitted (DEC-2000) to the EMBL/GenBank/DDBJ databases.
Fritsche J.,et al.Blood 96:732-739(2000).
Wei P.,et al.Biochem. Biophys. Res. Commun. 280:744-755(2001).
Schmutz J.,et al.Nature 431:268-274(2004).
Xu R.,et al.Submitted (MAR-1999) to the EMBL/GenBank/DDBJ databases.