

LGALS3 / Galectin 3 Antibody (clone M3/38)
Rat Monoclonal Antibody
Catalog # ALS16579**Specification**

LGALS3 / Galectin 3 Antibody (clone M3/38) - Product Information

Application	WB, IHC-P, E, IHC-F, FC
Primary Accession	P17931
Other Accession	3958
Reactivity	Human, Mouse
Host	Rat
Clonality	Monoclonal
Isotype	IgG2a,k
Calculated MW	26152
Dilution	WB~~1:1000 IHC-P~~N/A E~~N/A IHC-F~~N/A FC~~1:10~50

LGALS3 / Galectin 3 Antibody (clone M3/38) - Additional Information**Gene ID** 3958**Other Names**

LGALS3, 35 kd lectin, 35 kDa lectin, CBP35, GAL3, Galactoside-binding protein, GALIG, IgE-binding protein, Laminin-binding protein, Gal-3, GALBP, MAC-2, Mac-2 antigen, L31, MAC2, CBP 35, Galactose-specific lectin 3, Galectin-3, L-31, Lectin L-29

Reconstitution & Storage

Aqueous buffer, 0.09% sodium azide, may contain carrier protein/stabilizer. Store at 4°C, avoid repeated freeze thaw cycles.

Precautions

LGALS3 / Galectin 3 Antibody (clone M3/38) is for research use only and not for use in diagnostic or therapeutic procedures.

LGALS3 / Galectin 3 Antibody (clone M3/38) - Protein Information**Name** LGALS3 ([HGNC:6563](#))**Synonyms** MAC2**Function**

Galactose-specific lectin which binds IgE. May mediate with the alpha-3, beta-1 integrin the stimulation by CSPG4 of endothelial cells migration. Together with DMBT1, required for terminal differentiation of columnar epithelial cells during early embryogenesis (By similarity). In the nucleus: acts as a pre-mRNA splicing factor. Involved in acute inflammatory responses including

neutrophil activation and adhesion, chemoattraction of monocytes macrophages, opsonization of apoptotic neutrophils, and activation of mast cells. Together with TRIM16, coordinates the recognition of membrane damage with mobilization of the core autophagy regulators ATG16L1 and BECN1 in response to damaged endomembranes.

Cellular Location

Cytoplasm. Nucleus. Secreted. Note=Secreted by a non- classical secretory pathway and associates with the cell surface. Can be secreted; the secretion is dependent on protein unfolding and facilitated by the cargo receptor TMED10; it results in protein translocation from the cytoplasm into the ERGIC (endoplasmic reticulum- Golgi intermediate compartment) followed by vesicle entry and secretion (PubMed:32272059).

Tissue Location

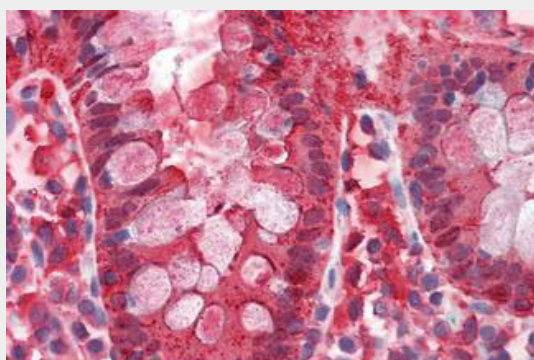
A major expression is found in the colonic epithelium. It is also abundant in the activated macrophages. Expressed in fetal membranes.

LGALS3 / Galectin 3 Antibody (clone M3/38) - Protocols

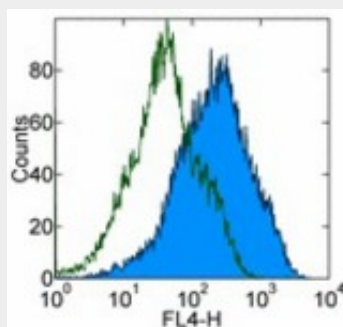
Provided below are standard protocols that you may find useful for product applications.

- [Western Blot](#)
- [Blocking Peptides](#)
- [Dot Blot](#)
- [Immunohistochemistry](#)
- [Immunofluorescence](#)
- [Immunoprecipitation](#)
- [Flow Cytometry](#)
- [Cell Culture](#)

LGALS3 / Galectin 3 Antibody (clone M3/38) - Images



Anti-LGALS3 / Galectin 3 antibody IHC staining of human colon.



Staining of mouse PECs with 0.25 ug of rat IgG2a (open) or 0.25 ug anti-galectin-3 (closed)...

LGALS3 / Galectin 3 Antibody (clone M3/38) - Background

Galactose-specific lectin which binds IgE. May mediate with the alpha-3, beta-1 integrin the stimulation by CSPG4 of endothelial cells migration. Together with DMBT1, required for terminal differentiation of columnar epithelial cells during early embryogenesis (By similarity). In the nucleus: acts as a pre-mRNA splicing factor. Involved in acute inflammatory responses including neutrophil activation and adhesion, chemoattraction of monocytes macrophages, opsonization of apoptotic neutrophils, and activation of mast cells.

LGALS3 / Galectin 3 Antibody (clone M3/38) - References

Robertson M.W.,et al.Biochemistry 29:8093-8100(1990).
Cherayil B.,et al.Proc. Natl. Acad. Sci. U.S.A. 87:7324-7328(1990).
Oda Y.,et al.Gene 99:279-283(1991).
Raz A.,et al.Cancer Res. 51:2173-2178(1991).
Lotz M.M.,et al.Proc. Natl. Acad. Sci. U.S.A. 90:3466-3470(1993).