

Selenium Binding Protein 1 Antibody (clone 3D4)
Mouse Monoclonal Antibody
Catalog # ALS16584**Specification**

Selenium Binding Protein 1 Antibody (clone 3D4) - Product Information

Application	WB, IHC-P
Primary Accession	O13228
Other Accession	8991
Reactivity	Human
Host	Mouse
Clonality	Monoclonal
Isotype	IgG2a
Calculated MW	52391
Dilution	WB~~1:1000 IHC-P~~N/A

Selenium Binding Protein 1 Antibody (clone 3D4) - Additional Information**Gene ID** 8991**Other Names**

SELENBP1, HSBP, HSP56, SBP56, Selenium-binding protein 1, SBP, SP56, LPSB, Selenium binding protein 1

Target/Specificity

Human SELENBP1 / SP56

Reconstitution & Storage

PBS, pH 7.3, 1% BSA, 50% glycerol, 0.02% sodium azide. Store at -20°C. Minimize freezing and thawing.

Precautions

Selenium Binding Protein 1 Antibody (clone 3D4) is for research use only and not for use in diagnostic or therapeutic procedures.

Selenium Binding Protein 1 Antibody (clone 3D4) - Protein Information**Name** SELENBP1**Synonyms** SBP**Function**

Catalyzes the oxidation of methanethiol, an organosulfur compound known to be produced in substantial amounts by gut bacteria (PubMed:29255262).

Selenium-binding protein which may be involved in the sensing of reactive xenobiotics in the cytoplasm. May be involved in intra-Golgi protein transport (By similarity).

Cellular Location

Nucleus. Cytoplasm, cytosol Membrane {ECO:0000250|UniProtKB:Q8VIF7}; Peripheral membrane protein {ECO:0000250|UniProtKB:Q8VIF7}. Note=May associate with Golgi membrane (By similarity). May associate with the membrane of autophagosomes (By similarity). {ECO:0000250|UniProtKB:Q8VIF7}

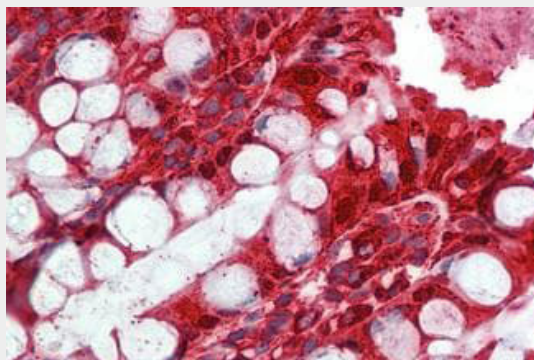
Tissue Location

Widely expressed. Highly expressed in liver, lung, colon, prostate, kidney and pancreas. In brain, present both in neurons and glia (at protein level). Down-regulated in lung adenocarcinoma, colorectal carcinoma and ovarian cancer. Two-fold up-regulated in brain and blood from schizophrenia patients.

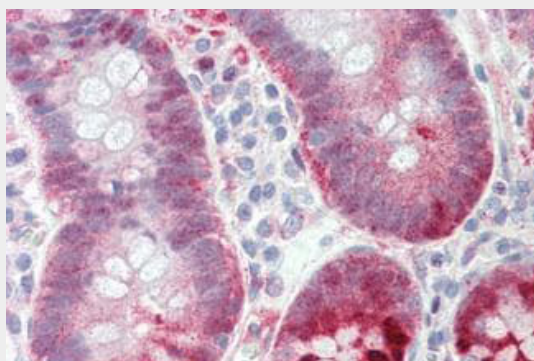
Selenium Binding Protein 1 Antibody (clone 3D4) - Protocols

Provided below are standard protocols that you may find useful for product applications.

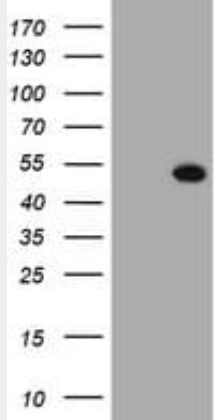
- [Western Blot](#)
- [Blocking Peptides](#)
- [Dot Blot](#)
- [Immunohistochemistry](#)
- [Immunofluorescence](#)
- [Immunoprecipitation](#)
- [Flow Cytometry](#)
- [Cell Culture](#)

Selenium Binding Protein 1 Antibody (clone 3D4) - Images

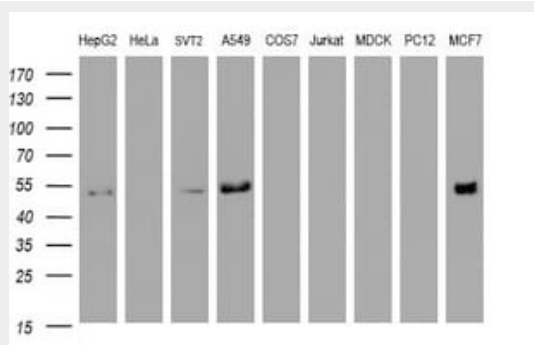
Anti-SELENBP1 / SP56 antibody IHC staining of human colon.



Anti-SELENBP1 / SP56 antibody IHC staining of human small intestine.



HEK293T cells were transfected with the pCMV6-ENTRY control (Left lane) or pCMV6-ENTRY SELENBP1...



Western blot of extracts (35 ug) from 9 different cell lines by using anti-SELENBP1 monoclonal...

Selenium Binding Protein 1 Antibody (clone 3D4) - Background

Selenium-binding protein which may be involved in the sensing of reactive xenobiotics in the cytoplasm. May be involved in intra-Golgi protein transport (By similarity).

Selenium Binding Protein 1 Antibody (clone 3D4) - References

- Chang P.W.G.,et al.J. Cell. Biochem. 64:217-224(1997).
- Ebert L.,et al.Submitted (JUN-2004) to the EMBL/GenBank/DDBJ databases.
- Ota T.,et al.Nat. Genet. 36:40-45(2004).
- Gregory S.G.,et al.Nature 441:315-321(2006).
- Mural R.J.,et al.Submitted (SEP-2005) to the EMBL/GenBank/DDBJ databases.