

CRYM Antibody (clone 1G7)
Mouse Monoclonal Antibody
Catalog # ALS16586**Specification**

CRYM Antibody (clone 1G7) - Product Information

Application	IHC, IF, WB, FC
Primary Accession	Q14894
Other Accession	1428
Reactivity	Human, Rat
Host	Mouse
Clonality	Monoclonal
Isotype	IgG2b
Calculated MW	33776

CRYM Antibody (clone 1G7) - Additional Information**Gene ID** 1428**Other Names**

CRYM, Crystallin, mu, Ketimine reductase, Mu-crystallin homolog, THBP, DFNA40

Target/Specificity

Human CRYM

Reconstitution & Storage

PBS, pH 7.3, 1% BSA, 50% glycerol, 0.02% sodium azide. Store at -20°C. Minimize freezing and thawing.

Precautions

CRYM Antibody (clone 1G7) is for research use only and not for use in diagnostic or therapeutic procedures.

CRYM Antibody (clone 1G7) - Protein Information**Name** CRYM**Synonyms** THBP**Function**

Specifically catalyzes the reduction of imine bonds in brain substrates that may include cystathionine ketimine (CysK) and lanthionine ketimine (LK). Binds thyroid hormone which is a strong reversible inhibitor. Presumably involved in the regulation of the free intracellular concentration of triiodothyronine and access to its nuclear receptors.

Cellular Location

Cytoplasm.

Tissue Location

Expressed in neural tissue, muscle and kidney.

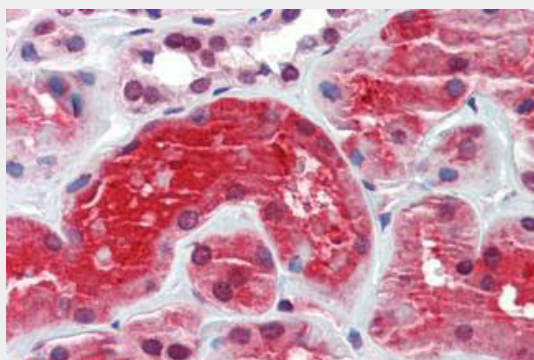
Volume

50 μ l

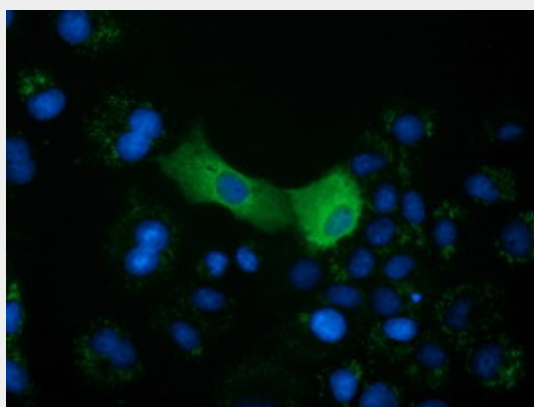
CRYM Antibody (clone 1G7) - Protocols

Provided below are standard protocols that you may find useful for product applications.

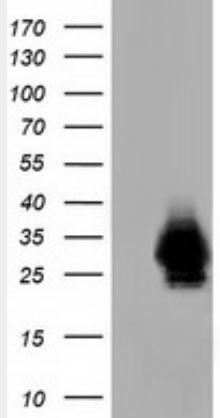
- [Western Blot](#)
- [Blocking Peptides](#)
- [Dot Blot](#)
- [Immunohistochemistry](#)
- [Immunofluorescence](#)
- [Immunoprecipitation](#)
- [Flow Cytometry](#)
- [Cell Culture](#)

CRYM Antibody (clone 1G7) - Images

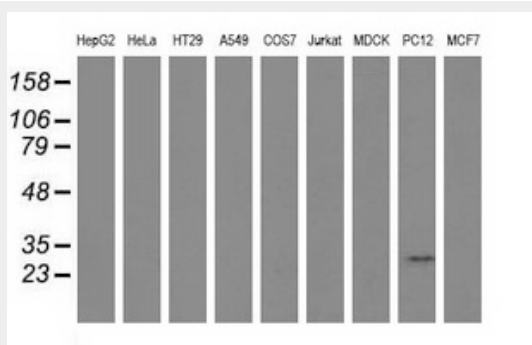
Anti-CRYM antibody IHC staining of human kidney.



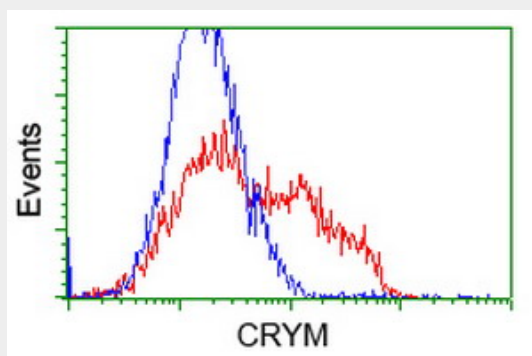
Anti-CRYM mouse monoclonal antibody immunofluorescent staining of COS7 cells transiently...



HEK293T cells were transfected with the pCMV6-ENTRY control (Left lane) or pCMV6-ENTRY CRYM...



Western blot of extracts (35 ug) from 9 different cell lines by using anti-CRYM monoclonal antibody.



HEK293T cells transfected with either overexpress plasmid (Red) or empty vector control plasmid...

CRYM Antibody (clone 1G7) - Background

Specifically catalyzes the reduction of imine bonds in brain substrates that may include cystathionine ketimine (CysK) and lanthionine ketimine (LK). Binds thyroid hormone which is a strong reversible inhibitor. Presumably involved in the regulation of the free intracellular concentration of triiodothyronine and access to its nuclear receptors.

CRYM Antibody (clone 1G7) - References

Segovia L.,et al.Mol. Vis. 3:9-9(1997).
Vie M.-P.,et al.Mol. Endocrinol. 11:1728-1736(1997).

Sperbeck S.J.,et al.Submitted (DEC-1997) to the EMBL/GenBank/DDBJ databases.
Loftus B.J.,et al.Genomics 60:295-308(1999).
Ota T.,et al.Nat. Genet. 36:40-45(2004).