

KCNK12 Antibody (C-Terminus)
Rabbit Polyclonal Antibody
Catalog # ALS16601**Specification**

KCNK12 Antibody (C-Terminus) - Product Information

Application	WB, IHC-P, IF, E
Primary Accession	O9HB15
Other Accession	56660
Reactivity	Human, Mouse, Rat
Host	Rabbit
Clonality	Polyclonal
Calculated MW	46889
Dilution	WB~~1:1000 IHC-P~~N/A IF~~1:50~200 E~~N/A

KCNK12 Antibody (C-Terminus) - Additional Information**Gene ID** 56660**Other Names**

KCNK12, K2p12.1, THIK-2, THIK2

Target/Specificity

Human KCNK12. KCNK12 antibody is predicted to not cross-react with other KCNK protein family members.

Reconstitution & Storage

PBS, 0.02% sodium azide. Short term 4°C, long term aliquot and store at -20°C, avoid freeze thaw cycles. Store undiluted.

Precautions

KCNK12 Antibody (C-Terminus) is for research use only and not for use in diagnostic or therapeutic procedures.

KCNK12 Antibody (C-Terminus) - Protein Information**Name** KCNK12 {ECO:0000303|PubMed:24163367, ECO:0000312|HGNC:HGNC:6274}**Function**

K(+) channel subunit that may homo- and heterodimerize to form functional channels with distinct regulatory and gating properties. Can heterodimerize with KCNK13 subunit to conduct K(+) outward rectifying currents at the plasma membrane. The homodimers are mainly retained in the endoplasmic reticulum compartment and may be targeted to the cell surface upon phosphorylation or other activation signals yet to be elucidated.

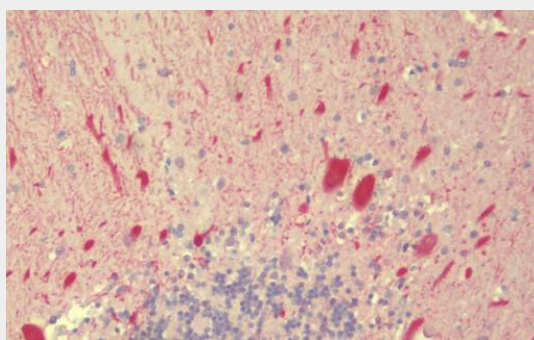
Cellular Location

Cell membrane; Multi-pass membrane protein. Endoplasmic reticulum membrane; Multi-pass membrane protein

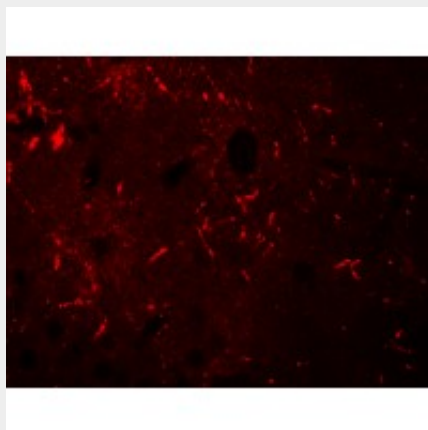
KCNK12 Antibody (C-Terminus) - Protocols

Provided below are standard protocols that you may find useful for product applications.

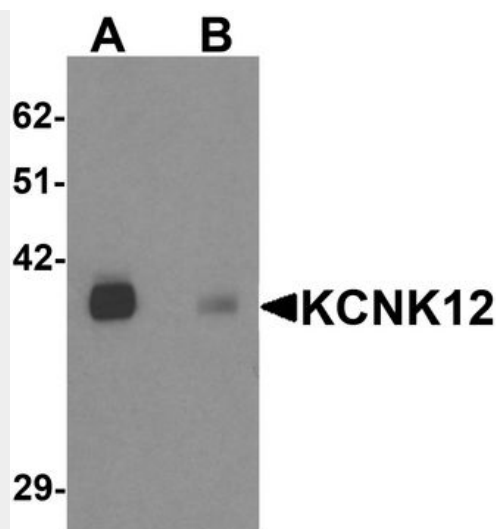
- [Western Blot](#)
- [Blocking Peptides](#)
- [Dot Blot](#)
- [Immunohistochemistry](#)
- [Immunofluorescence](#)
- [Immunoprecipitation](#)
- [Flow Cytometry](#)
- [Cell Culture](#)

KCNK12 Antibody (C-Terminus) - Images

Anti-KCNK12 antibody IHC staining of human brain, cerebellum.



Immunofluorescence of KCNK12 in mouse brain tissue with KCNK12 antibody at 20 µg/mL.



Western blot analysis of KCNK12 in rat brain tissue lysate with KCNK12 antibody at 0.5 ug/ml in...

KCNK12 Antibody (C-Terminus) - Background

Probable potassium channel subunit. No channel activity observed in heterologous systems. May need to associate with another protein to form a functional channel (By similarity).

KCNK12 Antibody (C-Terminus) - References

Rajan S., et al. J. Biol. Chem. 276:7302-7311(2001).