

C1orf187 / DRAXIN Antibody (C-Terminus)
Rabbit Polyclonal Antibody
Catalog # ALS16606**Specification**

C1orf187 / DRAXIN Antibody (C-Terminus) - Product Information

Application	IHC, IF, WB
Primary Accession	Q8NBI3
Other Accession	374946
Reactivity	Human, Mouse, Rat
Host	Rabbit
Clonality	Polyclonal
Calculated MW	38650

C1orf187 / DRAXIN Antibody (C-Terminus) - Additional Information**Gene ID** 374946**Other Names**

DRAXIN, AGPA3119, UNQ3119, C1orf187, Neucrin

Target/Specificity

Human C1orf187 / Neucrin/ Draxin. At least three isoforms of Neucrin are known to exist; this antibody will detect the two shorter isoforms. Neucrin antibody is predicted to not cross-react with RILP.

Reconstitution & Storage

PBS, 0.02% sodium azide. Short term 4°C, long term aliquot and store at -20°C, avoid freeze thaw cycles. Store undiluted.

Precautions

C1orf187 / DRAXIN Antibody (C-Terminus) is for research use only and not for use in diagnostic or therapeutic procedures.

C1orf187 / DRAXIN Antibody (C-Terminus) - Protein Information**Name** DRAXIN {ECO:0000255|HAMAP-Rule:MF_03060}**Synonyms** C1orf187**Function**

Chemorepulsive axon guidance protein required for the development of spinal cord and forebrain commissures. Acts as a chemorepulsive guidance protein for commissural axons during development. Able to inhibit or repel neurite outgrowth from dorsal spinal cord. Inhibits the stabilization of cytosolic beta-catenin (CTNNB1) via its interaction with LRP6, thereby acting as an antagonist of Wnt signaling pathway.

Cellular Location

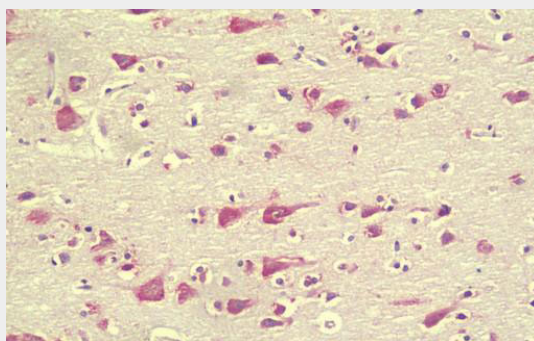
Secreted.

C1orf187 / DRAXIN Antibody (C-Terminus) - Protocols

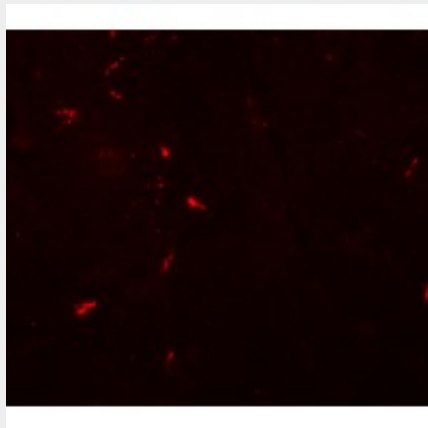
Provided below are standard protocols that you may find useful for product applications.

- [Western Blot](#)
- [Blocking Peptides](#)
- [Dot Blot](#)
- [Immunohistochemistry](#)
- [Immunofluorescence](#)
- [Immunoprecipitation](#)
- [Flow Cytometry](#)
- [Cell Culture](#)

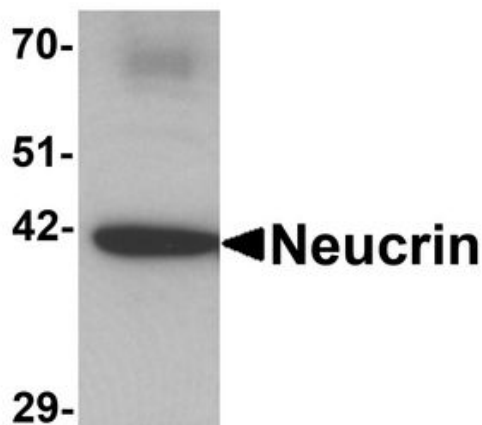
C1orf187 / DRAXIN Antibody (C-Terminus) - Images



Anti-C1orf187 / DRAXIN antibody IHC staining of human brain, cortex.



Immunofluorescence of NEUCRIN in mouse brain tissue with NEUCRIN antibody at 20 µg/mL.



Western blot analysis of Neucrin in rat cerebellum tissue lysate with Neucrin antibody at 1 ug/ml.

C1orf187 / DRAXIN Antibody (C-Terminus) - Background

Chemorepulsive axon guidance protein required for the development of spinal cord and forebrain commissures. Acts as a chemorepulsive guidance protein for commissural axons during development. Able to inhibit or repel neurite outgrowth from dorsal spinal cord. Inhibits the stabilization of cytosolic beta- catenin (CTNNB1) via its interaction with LRP6, thereby acting as an antagonist of Wnt signaling pathway.

C1orf187 / DRAXIN Antibody (C-Terminus) - References

Miyake A.,et al.Biochem. Biophys. Res. Commun. 390:1051-1055(2009).
Clark H.F.,et al.Genome Res. 13:2265-2270(2003).
Otsuki T.,et al.DNA Res. 12:117-126(2005).
Gregory S.G.,et al.Nature 441:315-321(2006).
Zhang Z.,et al.Protein Sci. 13:2819-2824(2004).