

**SLC35D3 / FRCL1 Antibody (C-Terminus)**  
**Rabbit Polyclonal Antibody**  
**Catalog # ALS16608****Specification****SLC35D3 / FRCL1 Antibody (C-Terminus) - Product Information**

Application	WB, IHC-P, IF, ICC, E
Primary Accession	<a href="#">Q5M8T2</a>
Other Accession	<a href="#">340146</a>
Reactivity	Human, Mouse
Host	Rabbit
Clonality	Polyclonal
Calculated MW	44183
Dilution	WB~~1:1000 IHC-P~~N/A IF~~1:50~200 ICC~~N/A E~~N/A

**SLC35D3 / FRCL1 Antibody (C-Terminus) - Additional Information**

**Gene ID** 340146

**Other Names**

SLC35D3, Frc, fringe-like 1, FRCL1, BA55K22.3

**Target/Specificity**

Human SLC35D3. At least two isoforms of SLC35D3 are known to exist; this antibody will recognize both isoforms. SLC35D3 antibody is predicted to not cross-react with SLC35D1 or SLC35D2.

**Reconstitution & Storage**

PBS, 0.02% sodium azide. Short term 4°C, long term aliquot and store at -20°C, avoid freeze thaw cycles. Store undiluted.

**Precautions**

SLC35D3 / FRCL1 Antibody (C-Terminus) is for research use only and not for use in diagnostic or therapeutic procedures.

**SLC35D3 / FRCL1 Antibody (C-Terminus) - Protein Information**

**Name** SLC35D3 ([HGNC:15621](#))

**Function**

Probable UDP-glucose transmembrane transporter involved in UDP-glucose transport from the cytosol to the lumen of synaptic vesicles (PubMed:<a href="http://www.uniprot.org/citations/34269178" target="\_blank">34269178</a>). It is involved in platelet dense granules maturation (By similarity).

### Cellular Location

Cytoplasmic vesicle, secretory vesicle, synaptic vesicle membrane; Multi-pass membrane protein. Early endosome membrane {ECO:0000250|UniProtKB:Q8BGF8}; Multi-pass membrane protein. Endoplasmic reticulum membrane {ECO:0000250|UniProtKB:Q8BGF8}; Multi-pass membrane protein. Note=Active at early endosome membrane in the biosynthesis of mature platelet-dense granules {ECO:0000250|UniProtKB:Q8BGF8}

### SLC35D3 / FRCL1 Antibody (C-Terminus) - Protocols

Provided below are standard protocols that you may find useful for product applications.

- [Western Blot](#)
- [Blocking Peptides](#)
- [Dot Blot](#)
- [Immunohistochemistry](#)
- [Immunofluorescence](#)
- [Immunoprecipitation](#)
- [Flow Cytometry](#)
- [Cell Culture](#)

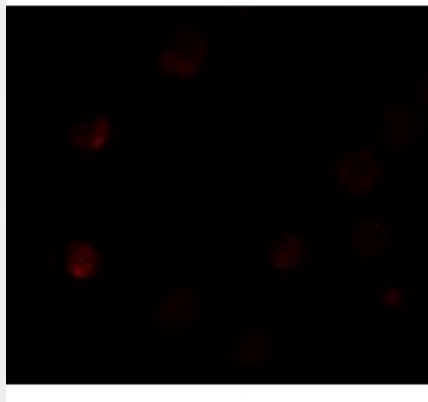
### SLC35D3 / FRCL1 Antibody (C-Terminus) - Images



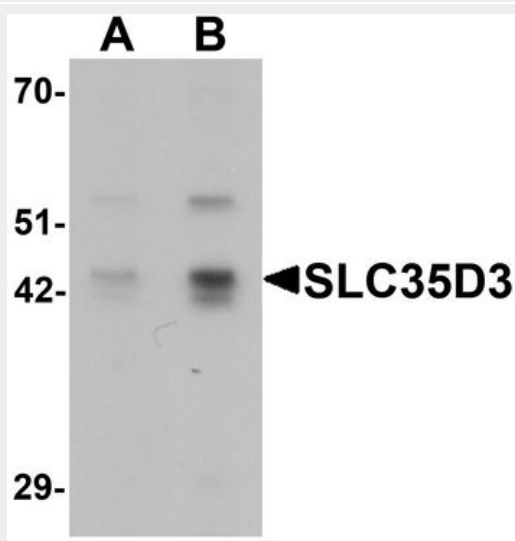
Anti-SLC35D3 / FRCL1 antibody IHC staining of human small intestine.



Immunocytochemistry of SLC35D3 in HeLa cells with SLC35D3 antibody at 2.5 µg/mL.



Immunofluorescence of SLC35D3 in HeLa cells with SLC35D3 antibody at 5  $\mu$ g/mL.



Western blot analysis of SLC35D3 in HeLa cell lysate with SLC35D3 antibody at (A) 1 and (B) 2 ug/ml.

#### **SLC35D3 / FRCL1 Antibody (C-Terminus) - Background**

May play a role in hemostasis as a regulator of the biosynthesis of platelet-dense granules.

#### **SLC35D3 / FRCL1 Antibody (C-Terminus) - References**

- Ota T., et al. Nat. Genet. 36:40-45(2004).
- Mungall A.J., et al. Nature 425:805-811(2003).
- Mural R.J., et al. Submitted (SEP-2005) to the EMBL/GenBank/DDBJ databases.