

GRG4 / TLE4 Antibody (N-Terminus)
Rabbit Polyclonal Antibody
Catalog # ALS16655**Specification**

GRG4 / TLE4 Antibody (N-Terminus) - Product Information

Application	IHC, WB
Primary Accession	Q04727
Other Accession	7091
Reactivity	Human, Mouse, Rat
Host	Rabbit
Clonality	Polyclonal
Isotype	IgG
Calculated MW	83755

GRG4 / TLE4 Antibody (N-Terminus) - Additional Information**Gene ID** 7091**Other Names**

TLE4, BCE1, BCE-1, E(spl), Enhancer of split groucho 4, ESG, ESG4, GRG4, Protein BCE-1, KIAA1261, R-esp2, B lymphocyte gene 1

Target/Specificity

The peptide sequence of this antibody is corresponding to amino acids of human 1-50aa. This antibody is predicted to recognize mouse and rat TLE4 protein because of synthesized peptide amino acid 100% homology with mouse and rattus TLE4 protein.

Reconstitution & Storage

PBS, pH 7.4, 0.02% sodium azide. Store at -20°C for up to one year.

Precautions

GRG4 / TLE4 Antibody (N-Terminus) is for research use only and not for use in diagnostic or therapeutic procedures.

GRG4 / TLE4 Antibody (N-Terminus) - Protein Information**Name** TLE4**Synonyms** GRG4, KIAA1261**Function**

Transcriptional corepressor that binds to a number of transcription factors. Inhibits the transcriptional activation mediated by PAX5, and by CTNNB1 and TCF family members in Wnt signaling. The effects of full-length TLE family members may be modulated by association with dominant-negative AES. Essential for the transcriptional repressor activity of SIX3 during retina and lens development and for SIX3 transcriptional auto-repression (By similarity). Involved in transcriptional repression of GNRHR and enhances MSX1-mediated transcriptional repression of

CGA/alpha-GSU (By similarity).

Cellular Location

Nucleus.

Tissue Location

In all tissues examined, mostly in brain, and muscle

Volume

100 µl

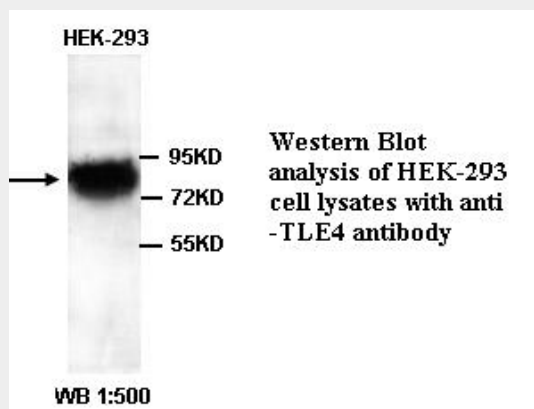
GRG4 / TLE4 Antibody (N-Terminus) - Protocols

Provided below are standard protocols that you may find useful for product applications.

- [Western Blot](#)
- [Blocking Peptides](#)
- [Dot Blot](#)
- [Immunohistochemistry](#)
- [Immunofluorescence](#)
- [Immunoprecipitation](#)
- [Flow Cytometry](#)
- [Cell Culture](#)

GRG4 / TLE4 Antibody (N-Terminus) - Images

Human Small Intestine: Formalin-Fixed, Paraffin-Embedded (FFPE)



Western Blot analysis of HEK293 cell lysates with anti-TLE4 antibody

GRG4 / TLE4 Antibody (N-Terminus) - Background

Transcriptional corepressor that binds to a number of transcription factors. Inhibits the transcriptional activation mediated by PAX5, and by CTNNB1 and TCF family members in Wnt signaling. The effects of full-length TLE family members may be modulated by association with dominant-negative AES. Essential for the transcriptional repressor activity of SIX3 during retina and lens development and for SIX3 transcriptional auto-repression (By similarity).

GRG4 / TLE4 Antibody (N-Terminus) - References

Nagase T.,et al.DNA Res. 6:337-345(1999).
Ota T.,et al.Nat. Genet. 36:40-45(2004).
Humphray S.J.,et al.Nature 429:369-374(2004).
Bechtel S.,et al.BMC Genomics 8:399-399(2007).
Stifani S.,et al.Nat. Genet. 2:119-127(1992).