

GOLM1 / GP73 / GOLPH2 Antibody (clone 6C9)
Mouse Monoclonal Antibody
Catalog # ALS16660**Specification**

GOLM1 / GP73 / GOLPH2 Antibody (clone 6C9) - Product Information

Application	IHC, IF, WB
Primary Accession	Q8NBJ4
Other Accession	51280
Reactivity	Human, Monkey
Host	Mouse
Clonality	Monoclonal
Isotype	IgG1
Calculated MW	45333

GOLM1 / GP73 / GOLPH2 Antibody (clone 6C9) - Additional Information**Gene ID** 51280**Other Names**

GOLM1, BA379P1.3, Golgi membrane protein GP73, Golgi phosphoprotein 2, Golgi protein, 73-kD, gp73, GOLPH2, PSEC0257, C9orf155, Golgi membrane protein 1

Target/Specificity

Human GP73 / GOLPH2

Reconstitution & Storage

PBS, pH 7.3, 1% BSA, 50% glycerol, 0.02% sodium azide. Store at -20°C. Minimize freezing and thawing.

Precautions

GOLM1 / GP73 / GOLPH2 Antibody (clone 6C9) is for research use only and not for use in diagnostic or therapeutic procedures.

GOLM1 / GP73 / GOLPH2 Antibody (clone 6C9) - Protein Information**Name** GOLM1**Synonyms** C9orf155, GOLPH2**Function**

Unknown. Cellular response protein to viral infection.

Cellular Location

Golgi apparatus, cis-Golgi network membrane; Single-pass type II membrane protein. Note=Early Golgi. Cycles via the cell surface and endosomes upon luminal pH disruption

Tissue Location

Widely expressed. Highly expressed in colon, prostate, trachea and stomach. Expressed at lower level in testis, muscle, lymphoid tissues, white blood cells and spleen. Predominantly expressed by cells of the epithelial lineage. Expressed at low level in normal liver. Expression significantly increases in virus (HBV, HCV) infected liver. Expression does not increase in liver disease due to non-viral causes (alcohol-induced liver disease, autoimmune hepatitis) Increased expression in hepatocytes appears to be a general feature of advanced liver disease. In liver tissue from patients with adult giant- cell hepatitis (GCH), it is strongly expressed in hepatocytes-derived syncytial giant cells. Constitutively expressed by biliary epithelial cells but not by hepatocytes.

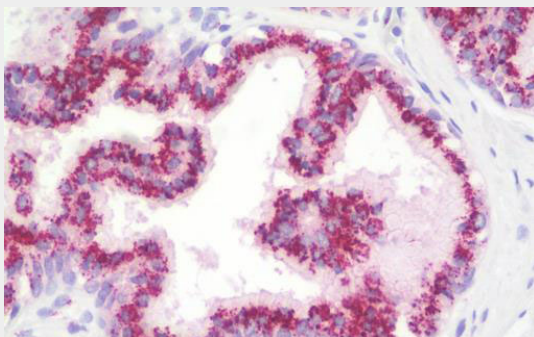
Volume
50 µl

GOLM1 / GP73 / GOLPH2 Antibody (clone 6C9) - Protocols

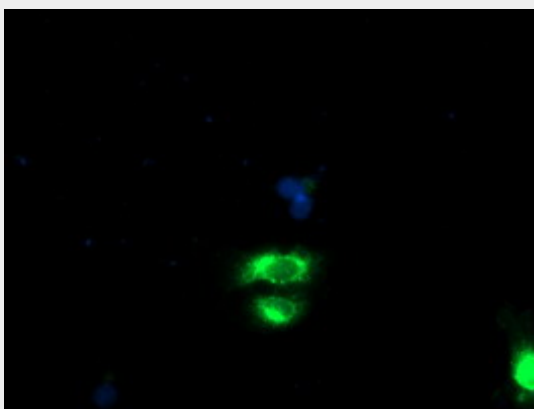
Provided below are standard protocols that you may find useful for product applications.

- [Western Blot](#)
- [Blocking Peptides](#)
- [Dot Blot](#)
- [Immunohistochemistry](#)
- [Immunofluorescence](#)
- [Immunoprecipitation](#)
- [Flow Cytometry](#)
- [Cell Culture](#)

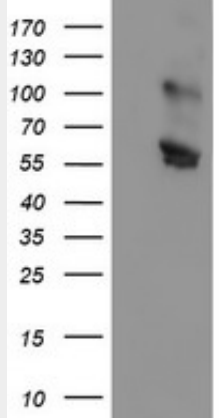
GOLM1 / GP73 / GOLPH2 Antibody (clone 6C9) - Images



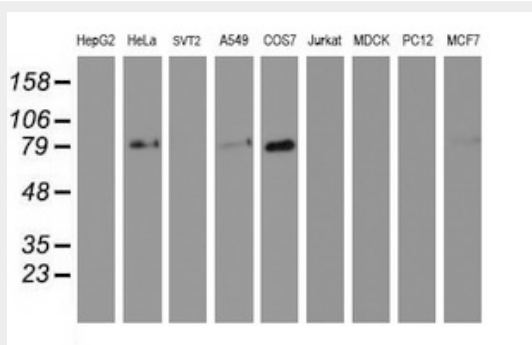
Anti-GOLM1 / GP73 / GOLPH2 antibody IHC staining of human prostate.



Anti-GOLM1 mouse monoclonal antibody immunofluorescent staining of COS7 cells transiently...



HEK293T cells were transfected with the pCMV6-ENTRY control (Left lane) or pCMV6-ENTRY GOLM1...



Western blot of extracts (35 ug) from 9 different cell lines by using anti-GOLM1 monoclonal...

GOLM1 / GP73 / GOLPH2 Antibody (clone 6C9) - Background

Unknown. Cellular response protein to viral infection.

GOLM1 / GP73 / GOLPH2 Antibody (clone 6C9) - References

- Kladney R.D.,et al.Gene 249:53-65(2000).
- Clark H.F.,et al.Genome Res. 13:2265-2270(2003).
- Ebert L.,et al.Submitted (JUN-2004) to the EMBL/GenBank/DDBJ databases.
- Otsuki T.,et al.DNA Res. 12:117-126(2005).
- Puri S.,et al.Traffic 3:641-653(2002).