

**RAB11FIP4 / RAB11-FIP4 Antibody (aa452-501)**  
**Rabbit Polyclonal Antibody**  
**Catalog # ALS16678****Specification**

---

**RAB11FIP4 / RAB11-FIP4 Antibody (aa452-501) - Product Information**

Application	IHC, WB
Primary Accession	<a href="#">Q86YS3</a>
Other Accession	<a href="#">84440</a>
Reactivity	Human, Mouse
Host	Rabbit
Clonality	Polyclonal
Isotype	IgG
Calculated MW	71928

**RAB11FIP4 / RAB11-FIP4 Antibody (aa452-501) - Additional Information****Gene ID** 84440**Other Names**

RAB11FIP4, FIP4-Rab11, KIAA1821, ARFO2, Arfophilin-2, RAB11-FIP4

**Target/Specificity**

RAB11FIP4 Antibody detects endogenous levels of total RAB11FIP4 protein.

**Reconstitution & Storage**PBS (without Mg<sup>2+</sup>, Ca<sup>2+</sup>), pH 7.4, 150 mM sodium chloride, 0.02% sodium azide, 50% glycerol.  
Store at -20°C for up to one year.**Precautions**

RAB11FIP4 / RAB11-FIP4 Antibody (aa452-501) is for research use only and not for use in diagnostic or therapeutic procedures.

**RAB11FIP4 / RAB11-FIP4 Antibody (aa452-501) - Protein Information****Name** RAB11FIP4**Synonyms** ARFO2, KIAA1821**Function**

Acts as a regulator of endocytic traffic by participating in membrane delivery. Required for the abscission step in cytokinesis, possibly by acting as an 'address tag' delivering recycling endosome membranes to the cleavage furrow during late cytokinesis. In case of infection by HCMV (human cytomegalovirus), may participate in egress of the virus out of nucleus; this function is independent of ARF6.

**Cellular Location**

Endosome. Cytoplasm, cytoskeleton, spindle Cytoplasm, cytoskeleton, microtubule organizing

center, centrosome. Recycling endosome membrane; Peripheral membrane protein. Cleavage furrow. Midbody. Cytoplasmic vesicle. Note=Recruited to the cleavage furrow and the midbody during cytokinesis

**Tissue Location**

Present at high level in testis (at protein level). Weakly expressed in other tissues.

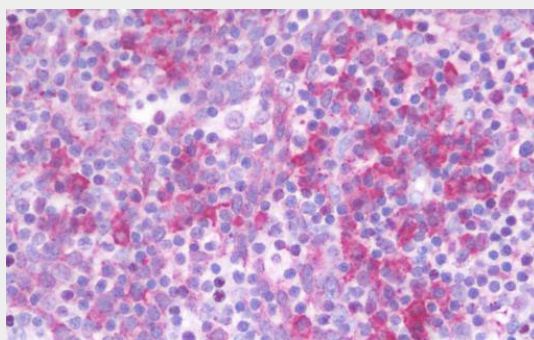
**Volume**

50  $\mu$ l

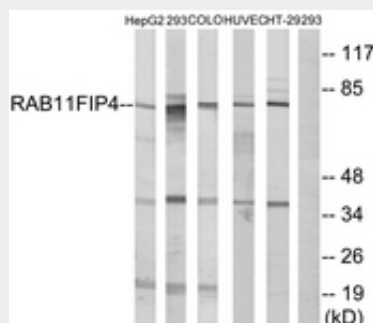
**RAB11FIP4 / RAB11-FIP4 Antibody (aa452-501) - Protocols**

Provided below are standard protocols that you may find useful for product applications.

- [Western Blot](#)
- [Blocking Peptides](#)
- [Dot Blot](#)
- [Immunohistochemistry](#)
- [Immunofluorescence](#)
- [Immunoprecipitation](#)
- [Flow Cytometry](#)
- [Cell Culture](#)

**RAB11FIP4 / RAB11-FIP4 Antibody (aa452-501) - Images**

Anti-RAB11FIP4 / RAB11-FIP4 antibody IHC staining of human tonsil.



Western blot of extracts from 293/COLO/HUVEC/HepG2/HT-29 cells, using RAB11FIP4 Antibody.

**RAB11FIP4 / RAB11-FIP4 Antibody (aa452-501) - Background**

Acts as a regulator of endocytic traffic by participating in membrane delivery. Required for the abscission step in cytokinesis, possibly by acting as an 'address tag' delivering recycling endosome

membranes to the cleavage furrow during late cytokinesis. In case of infection by HCMV (human cytomegalovirus), may participate in egress of the virus out of nucleus; this function is independent of ARF6.

#### **RAB11FIP4 / RAB11-FIP4 Antibody (aa452-501) - References**

Wallace D.M.,et al.Biochem. Biophys. Res. Commun. 299:770-779(2002).  
Ota T.,et al.Nat. Genet. 36:40-45(2004).  
Jenne D.E.,et al.Genes Chromosomes Cancer 37:111-120(2003).  
Nagase T.,et al.DNA Res. 8:85-95(2001).  
Bechtel S.,et al.BMC Genomics 8:399-399(2007).