

TACC1 Antibody (aa11-60)
Rabbit Polyclonal Antibody
Catalog # ALS16694**Specification**

TACC1 Antibody (aa11-60) - Product Information

Application	IHC, IF, WB
Primary Accession	O75410
Other Accession	6867
Reactivity	Human, Mouse
Host	Rabbit
Clonality	Polyclonal
Isotype	IgG
Calculated MW	87794

TACC1 Antibody (aa11-60) - Additional Information**Gene ID** 6867**Other Names**

TACC1, Ga55, Gastric cancer antigen Ga55, KIAA1103, Taxin-1

Target/Specificity

TACC1 Antibody detects endogenous levels of total TACC1 protein.

Reconstitution & StoragePBS (without Mg²⁺, Ca²⁺), pH 7.4, 150 mM sodium chloride, 0.02% sodium azide, 50% glycerol.
Store at -20°C for up to one year.**Precautions**

TACC1 Antibody (aa11-60) is for research use only and not for use in diagnostic or therapeutic procedures.

TACC1 Antibody (aa11-60) - Protein Information**Name** TACC1**Synonyms** KIAA1103**Function**

Involved in transcription regulation induced by nuclear receptors, including in T3 thyroid hormone and all-trans retinoic acid pathways (PubMed:20078863). Might promote the nuclear localization of the receptors (PubMed:20078863). Likely involved in the processes that promote cell division prior to the formation of differentiated tissues.

Cellular Location

Cytoplasm. Nucleus. Cytoplasm, cytoskeleton, microtubule organizing center, centrosome. Midbody. Note=Nucleus during interphase. Weakly concentrated at centrosomes during mitosis and colocalizes with AURKC at the midbody during cytokinesis. [Isoform 10]: Cytoplasm

Tissue Location

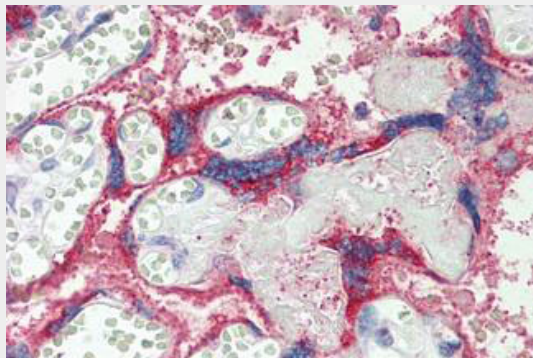
Isoform 1, isoform 3 and isoform 5 are ubiquitous. Isoform 2 is strongly expressed in the brain, weakly detectable in lung and colon, and overexpressed in gastric cancer. Isoform 4 is not detected in normal tissues, but strong expression was found in gastric cancer tissues. Down-regulated in a subset of cases of breast cancer

TACC1 Antibody (aa11-60) - Protocols

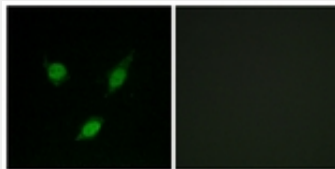
Provided below are standard protocols that you may find useful for product applications.

- [Western Blot](#)
- [Blocking Peptides](#)
- [Dot Blot](#)
- [Immunohistochemistry](#)
- [Immunofluorescence](#)
- [Immunoprecipitation](#)
- [Flow Cytometry](#)
- [Cell Culture](#)

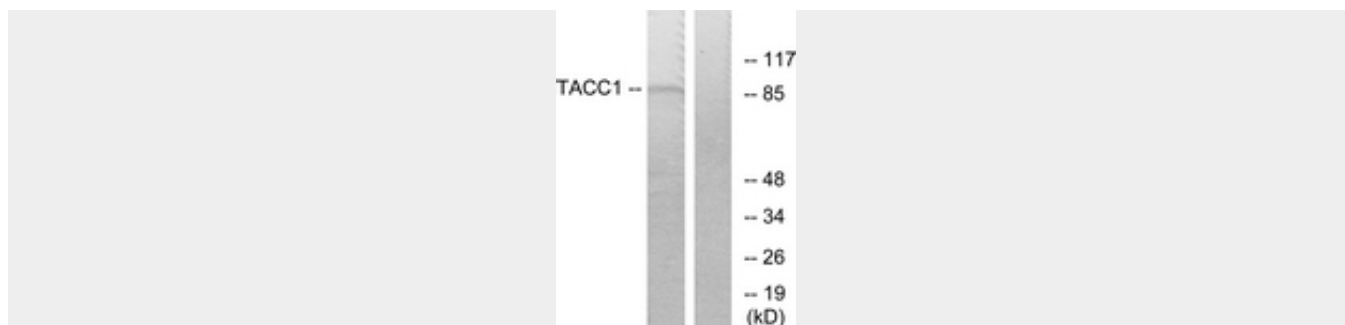
TACC1 Antibody (aa11-60) - Images



Anti-TACC1 antibody IHC staining of human placenta.



Immunofluorescence of MCF7 cells, using TACC1 Antibody.



Western blot of extracts from K562 cells, using TACC1 Antibody.

TACC1 Antibody (aa11-60) - Background

Likely involved in the processes that promote cell division prior to the formation of differentiated tissues.

TACC1 Antibody (aa11-60) - References

- Still I.H.,et al.Oncogene 18:4032-4038(1999).
- Still I.H.,et al.BMC Evol. Biol. 4:16-16(2004).
- Li F.,et al.Submitted (AUG-2002) to the EMBL/GenBank/DDBJ databases.
- Ota T.,et al.Nat. Genet. 36:40-45(2004).
- Mural R.J.,et al.Submitted (SEP-2005) to the EMBL/GenBank/DDBJ databases.