

CD68 Antibody (clone KP1)
Mouse Monoclonal Antibody
Catalog # ALS16716

Specification

CD68 Antibody (clone KP1) - Product Information

Application	WB, IHC-P, IF, IP, FC
Primary Accession	P34810
Other Accession	968
Reactivity	Human, Rat
Host	Mouse
Clonality	Monoclonal
Isotype	IgG1
Calculated MW	37408
Dilution	WB~~1:1000 IHC-P~~N/A IF~~1:50~200 IP~~N/A FC~~1:10~50

CD68 Antibody (clone KP1) - Additional Information

Gene ID 968

Other Names

CD68, CD68 antigen, gp110, SCARD1, CD68 molecule, LAMP4, Macrophage antigen CD68, Macrosialin

Target/Specificity

Recognizes the human CD68 cell surface antigen, a 110kD glycoprotein primarily expressed by macrophages and monocytes.

Reconstitution & Storage

PBS, 0.09% sodium azide. +4°C or -20°C, Avoid repeated freezing and thawing.

Precautions

CD68 Antibody (clone KP1) is for research use only and not for use in diagnostic or therapeutic procedures.

CD68 Antibody (clone KP1) - Protein Information

Name CD68

Function

Could play a role in phagocytic activities of tissue macrophages, both in intracellular lysosomal metabolism and extracellular cell-cell and cell-pathogen interactions. Binds to tissue- and organ-specific lectins or selectins, allowing homing of macrophage subsets to particular sites. Rapid recirculation of CD68 from endosomes and lysosomes to the plasma membrane may allow

macrophages to crawl over selectin-bearing substrates or other cells.

Cellular Location

[Isoform Short]: Cell membrane; Single-pass type I membrane protein

Tissue Location

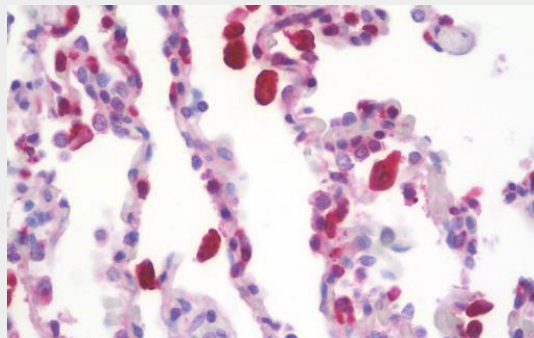
Highly expressed by blood monocytes and tissue macrophages. Also expressed in lymphocytes, fibroblasts and endothelial cells. Expressed in many tumor cell lines which could allow them to attach to selectins on vascular endothelium, facilitating their dissemination to secondary sites.

CD68 Antibody (clone KP1) - Protocols

Provided below are standard protocols that you may find useful for product applications.

- [Western Blot](#)
- [Blocking Peptides](#)
- [Dot Blot](#)
- [Immunohistochemistry](#)
- [Immunofluorescence](#)
- [Immunoprecipitation](#)
- [Flow Cytometry](#)
- [Cell Culture](#)

CD68 Antibody (clone KP1) - Images



Anti-CD68 antibody IHC staining of human lung.

CD68 Antibody (clone KP1) - Background

Could play a role in phagocytic activities of tissue macrophages, both in intracellular lysosomal metabolism and extracellular cell-cell and cell-pathogen interactions. Binds to tissue- and organ-specific lectins or selectins, allowing homing of macrophage subsets to particular sites. Rapid recirculation of CD68 from endosomes and lysosomes to the plasma membrane may allow macrophages to crawl over selectin-bearing substrates or other cells.

CD68 Antibody (clone KP1) - References

Holness C.L., et al. *Blood* 81:1607-1613(1993).
Kalnine N., et al. Submitted (JUL-2003) to the EMBL/GenBank/DDBJ databases.
Ota T., et al. *Nat. Genet.* 36:40-45(2004).
Suzuki Y., et al. Submitted (APR-2005) to the EMBL/GenBank/DDBJ databases.
Zody M.C., et al. *Nature* 440:1045-1049(2006).

CD68 Antibody (clone KP1) - Citations

- [CD68- and CD163-positive tumor infiltrating macrophages in non-metastatic breast cancer: a retrospective study and meta-analysis.](#)