

**STAT5A Antibody (clone 9F7)**  
**Mouse Monoclonal Antibody**  
**Catalog # ALS16733****Specification**

---

**STAT5A Antibody (clone 9F7) - Product Information**

Application	WB, IHC-P, IF, FC
Primary Accession	<a href="#">P42229</a>
Other Accession	<a href="#">6776</a>
Reactivity	Human, Rat, Monkey, Dog
Host	Mouse
Clonality	Monoclonal
Isotype	IgG1
Calculated MW	90647
Dilution	WB~~1:1000 IHC-P~~N/A IF~~1:50~200 FC~~1:10~50

**STAT5A Antibody (clone 9F7) - Additional Information****Gene ID** 6776**Other Names**

STAT5A, MGF, STAT5

**Target/Specificity**

Human STAT5A / STAT5

**Reconstitution & Storage**

PBS, pH 7.3, 1% BSA, 50% glycerol, 0.02% sodium azide. Store at -20°C. Minimize freezing and thawing.

**Precautions**

STAT5A Antibody (clone 9F7) is for research use only and not for use in diagnostic or therapeutic procedures.

**STAT5A Antibody (clone 9F7) - Protein Information****Name** STAT5A**Synonyms** STAT5**Function**

Carries out a dual function: signal transduction and activation of transcription. Mediates cellular responses to the cytokine KITLG/SCF and other growth factors. Mediates cellular responses to ERBB4. May mediate cellular responses to activated FGFR1, FGFR2, FGFR3 and FGFR4. Binds to the GAS element and activates PRL- induced transcription. Regulates the expression of milk

proteins during lactation.

**Cellular Location**

Cytoplasm. Nucleus. Note=Translocated into the nucleus in response to phosphorylation

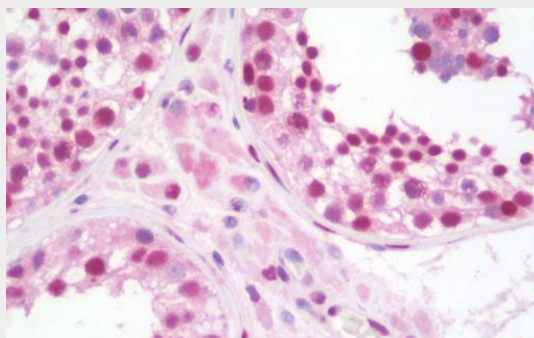
**Volume**

50  $\mu$ l

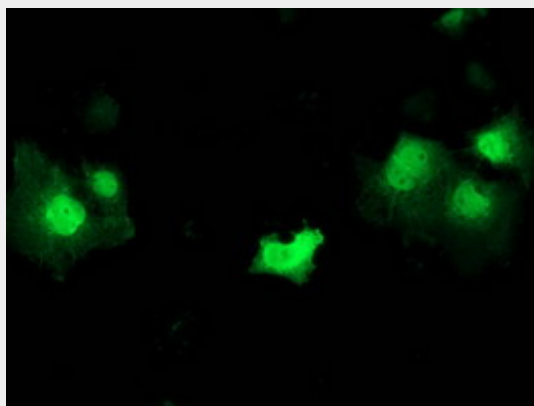
**STAT5A Antibody (clone 9F7) - Protocols**

Provided below are standard protocols that you may find useful for product applications.

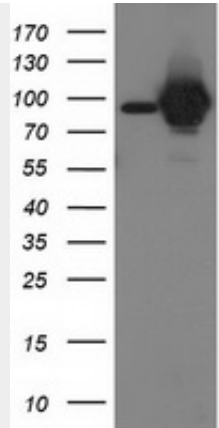
- [Western Blot](#)
- [Blocking Peptides](#)
- [Dot Blot](#)
- [Immunohistochemistry](#)
- [Immunofluorescence](#)
- [Immunoprecipitation](#)
- [Flow Cytometry](#)
- [Cell Culture](#)

**STAT5A Antibody (clone 9F7) - Images**

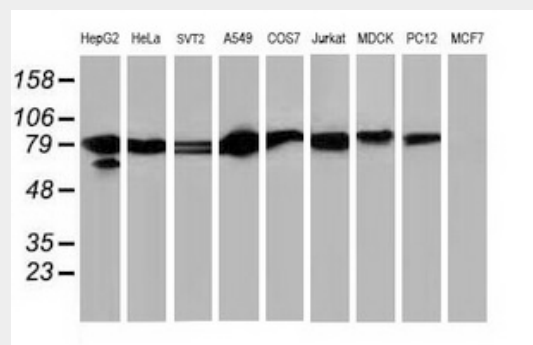
Anti-STAT5A antibody IHC staining of human testis.



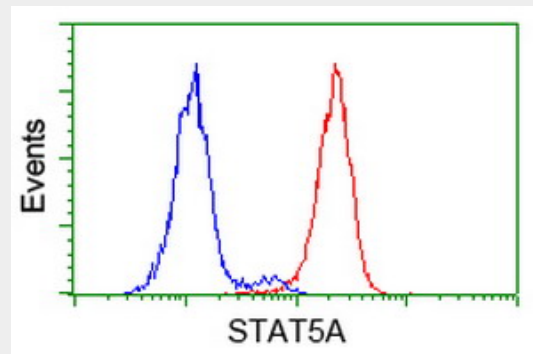
Anti-STAT5A mouse monoclonal antibody immunofluorescent staining of COS7 cells transiently...



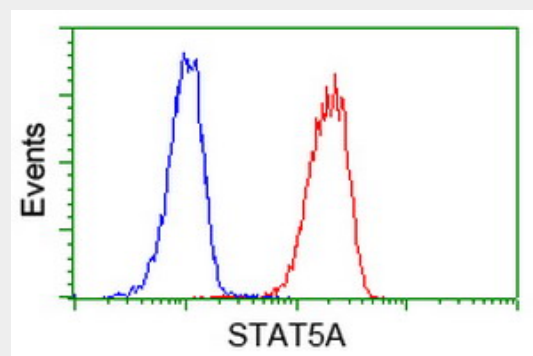
HEK293T cells were transfected with the pCMV6-ENTRY control (Left lane) or pCMV6-ENTRY STAT5A...



Western blot of extracts (35 ug) from 9 different cell lines by using anti-STAT5A monoclonal...



Flow cytometry of HeLa cells, using anti-STAT5A antibody (Red), compared to a nonspecific...



Flow cytometry of Jurkat cells, using anti-STAT5A antibody (Red), compared to a nonspecific...

**STAT5A Antibody (clone 9F7) - Background**

Carries out a dual function: signal transduction and activation of transcription. Mediates cellular responses to the cytokine KITLG/SCF and other growth factors. Mediates cellular responses to ERBB4. May mediate cellular responses to activated FGFR1, FGFR2, FGFR3 and FGFR4. Binds to the GAS element and activates PRL-induced transcription. Regulates the expression of milk proteins during lactation.

**STAT5A Antibody (clone 9F7) - References**

Hou J.,et al.Immunity 2:321-329(1995).  
Lin J.X.,et al.Submitted (DEC-1995) to the EMBL/GenBank/DDBJ databases.  
Tan D.,et al.Submitted (APR-2006) to the EMBL/GenBank/DDBJ databases.  
Ota T.,et al.Nat. Genet. 36:40-45(2004).  
Zody M.C.,et al.Nature 440:1045-1049(2006).