

**HSPG2 / Perlecan Antibody (clone A7L6)**  
**Rat Monoclonal Antibody**  
**Catalog # ALS16735****Specification**

---

**HSPG2 / Perlecan Antibody (clone A7L6) - Product Information**

Application	IHC
Primary Accession	<a href="#">P98160</a>
Other Accession	<a href="#">3339</a>
Reactivity	Human, Mouse, Rat, Bovine
Host	Rat
Clonality	Monoclonal
Isotype	IgG2a
Calculated MW	468830

**HSPG2 / Perlecan Antibody (clone A7L6) - Additional Information****Gene ID** 3339**Other Names**

HSPG2, Endorepellin (domain V region), HSPG, Heparan sulfate proteoglycan 2, Perlecan, Perlecan proteoglycan, SJA, SJS1, PRCAN, SJS

**Target/Specificity**

Recognizes domain IV of the core protein of the large heparan sulphate proteoglycan or perlecan. The reactivity is independent of the galactosaminoglycan moieties. Therefore, the epitope is not sensitive to heparitinase treatment.

**Reconstitution & Storage**

PBS containing 0.09% sodium azide. Short term 4°C, long term aliquot and store at -20°C, avoid freeze thaw cycles. Store undiluted.

**Precautions**

HSPG2 / Perlecan Antibody (clone A7L6) is for research use only and not for use in diagnostic or therapeutic procedures.

**HSPG2 / Perlecan Antibody (clone A7L6) - Protein Information****Name** HSPG2**Function**

Integral component of basement membranes. Component of the glomerular basement membrane (GBM), responsible for the fixed negative electrostatic membrane charge, and which provides a barrier which is both size- and charge-selective. It serves as an attachment substrate for cells. Plays essential roles in vascularization. Critical for normal heart development and for regulating the vascular response to injury. Also required for avascular cartilage development. [LG3 peptide]: Has anti-angiogenic properties that require binding of calcium ions for full activity.

**Cellular Location**

Secreted, extracellular space, extracellular matrix, basement membrane. Secreted

**Tissue Location**

Detected in cerebrospinal fluid, fibroblasts and urine (at protein level).

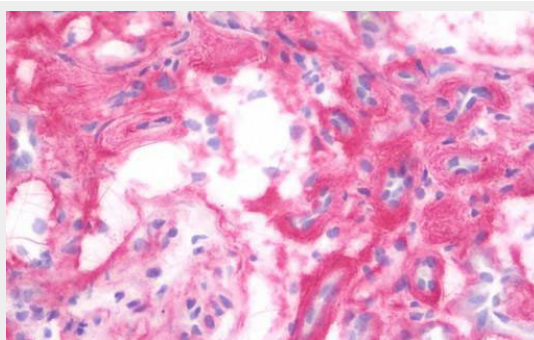
**HSPG2 / Perlecan Antibody (clone A7L6) - Protocols**

Provided below are standard protocols that you may find useful for product applications.

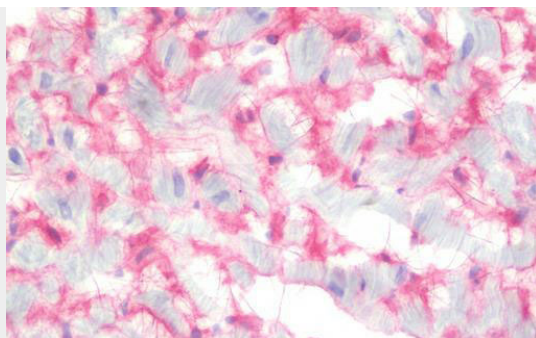
- [Western Blot](#)
- [Blocking Peptides](#)
- [Dot Blot](#)
- [Immunohistochemistry](#)
- [Immunofluorescence](#)
- [Immunoprecipitation](#)
- [Flow Cytometry](#)
- [Cell Culture](#)

**HSPG2 / Perlecan Antibody (clone A7L6) - Images**

IHC with HSPG2 antibody on frozen human spleen.



IHC with HSPG2 antibody on frozen human kidney.



IHC with HSPG2 antibody on frozen human heart.

#### **HSPG2 / Perlecan Antibody (clone A7L6) - Background**

Integral component of basement membranes. Component of the glomerular basement membrane (GBM), responsible for the fixed negative electrostatic membrane charge, and which provides a barrier which is both size- and charge-selective. It serves as an attachment substrate for cells. Plays essential roles in vascularization. Critical for normal heart development and for regulating the vascular response to injury. Also required for avascular cartilage development. The LG3 peptide has anti-angiogenic properties that require binding of calcium ions for full activity.

#### **HSPG2 / Perlecan Antibody (clone A7L6) - References**

Murdoch A.D., et al. J. Biol. Chem. 267:8544-8557(1992).  
Kallunki P., et al. J. Cell Biol. 116:559-571(1992).  
Gregory S.G., et al. Nature 441:315-321(2006).  
Cohen I.R., et al. Proc. Natl. Acad. Sci. U.S.A. 90:10404-10408(1993).  
Nicole S., et al. Nat. Genet. 26:480-483(2000).