

EMA / MUC1 Antibody (C-Terminus)
Rabbit Polyclonal Antibody
Catalog # ALS16769**Specification**

EMA / MUC1 Antibody (C-Terminus) - Product Information

Application	IHC, WB
Primary Accession	P15941
Other Accession	4582
Reactivity	Human, Mouse
Host	Rabbit
Clonality	Polyclonal
Isotype	IgG
Calculated MW	122102

EMA / MUC1 Antibody (C-Terminus) - Additional Information**Gene ID** 4582**Other Names**

MUC1, CA15-3, CD227, Carcinoma-associated mucin, CD227 antigen, DF3 antigen, Episialin, Epithelial membrane antigen, H23 antigen, H23AG, Krebs von den Lungen-6, MAM6, MUC1/ZD, MUC-1/SEC, Mucin-1, Pem, KL-6, MUC-1/X, Tumor-associated mucin, Peanut-rea ...

Target/Specificity

MUC1 antibody is human and mouse reactive. Multiple isoforms of MUC1 are known to exist. MUC1 often migrates at a higher molecular weight in SDS-PAGE due to high levels of post-translational modification.

Reconstitution & Storage

PBS, 0.02% sodium azide. Long term: -20°C; Short term: +4°C. Avoid repeat freeze-thaw cycles.

Precautions

EMA / MUC1 Antibody (C-Terminus) is for research use only and not for use in diagnostic or therapeutic procedures.

EMA / MUC1 Antibody (C-Terminus) - Protein Information**Name** MUC1**Synonyms** PUM**Function**

The alpha subunit has cell adhesive properties. Can act both as an adhesion and an anti-adhesion protein. May provide a protective layer on epithelial cells against bacterial and enzyme attack.

Cellular Location

Apical cell membrane; Single-pass type I membrane protein. Note=Exclusively located in the

apical domain of the plasma membrane of highly polarized epithelial cells After endocytosis, internalized and recycled to the cell membrane Located to microvilli and to the tips of long filopodial protusions [Isoform Y]: Secreted. [Mucin-1 subunit beta]: Cell membrane. Cytoplasm. Nucleus. Note=On EGF and PDGFRB stimulation, transported to the nucleus through interaction with CTNNB1, a process which is stimulated by phosphorylation. On HRG stimulation, colocalizes with JUP/gamma-catenin at the nucleus

Tissue Location

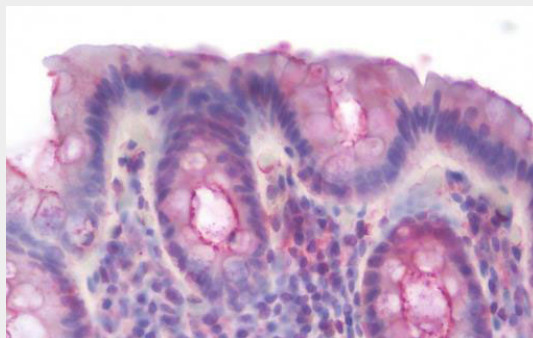
Expressed on the apical surface of epithelial cells, especially of airway passages, breast and uterus. Also expressed in activated and unactivated T-cells. Overexpressed in epithelial tumors, such as breast or ovarian cancer and also in non-epithelial tumor cells. Isoform Y is expressed in tumor cells only

EMA / MUC1 Antibody (C-Terminus) - Protocols

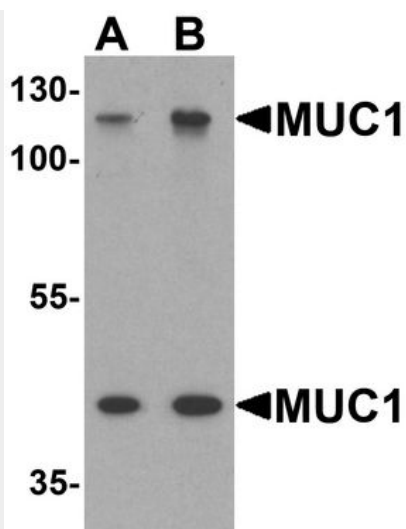
Provided below are standard protocols that you may find useful for product applications.

- [Western Blot](#)
- [Blocking Peptides](#)
- [Dot Blot](#)
- [Immunohistochemistry](#)
- [Immunofluorescence](#)
- [Immunoprecipitation](#)
- [Flow Cytometry](#)
- [Cell Culture](#)

EMA / MUC1 Antibody (C-Terminus) - Images



Anti-EMA / MUC1 antibody IHC staining of human colon.



Western blot analysis of MUC1 in HeLa cell lysate with MUC1 antibody at (A) 1 and (B) 2 ug/ml.

EMA / MUC1 Antibody (C-Terminus) - Background

The alpha subunit has cell adhesive properties. Can act both as an adhesion and an anti-adhesion protein. May provide a protective layer on epithelial cells against bacterial and enzyme attack.

EMA / MUC1 Antibody (C-Terminus) - References

- Lan M.S.,et al.J. Biol. Chem. 265:15294-15299(1990).
- Ligtenberg M.J.L.,et al.J. Biol. Chem. 265:5573-5578(1990).
- Gendler S.J.,et al.J. Biol. Chem. 265:15286-15293(1990).
- Lancaster C.A.,et al.Biochem. Biophys. Res. Commun. 173:1019-1029(1990).
- Wreschner D.H.,et al.Eur. J. Biochem. 189:463-473(1990).