

RPSA / Laminin Receptor Antibody (C-Terminus)
Rabbit Polyclonal Antibody
Catalog # ALS16785**Specification****RPSA / Laminin Receptor Antibody (C-Terminus) - Product Information**

Application	WB, IHC-P, IF, E
Primary Accession	P08865
Other Accession	3921
Reactivity	Human, Mouse
Host	Rabbit
Clonality	Polyclonal
Isotype	IgG
Calculated MW	32854
Dilution	WB~~1:1000 IHC-P~~N/A IF~~1:50~200 E~~N/A

RPSA / Laminin Receptor Antibody (C-Terminus) - Additional Information**Gene ID** 3921**Other Names**

RPSA, 37 kDa laminin receptor, 37LRP, 40S ribosomal protein SA, 67LR, 67 kDa laminin receptor, 37/67 kDa laminin receptor, 67kD, ribosomal protein SA, LAMR1, LAMBR, Laminin receptor 1, LamR, NEM/1CHD4, SA, LRP/LR, Laminin binding protein, Laminin Rec ...

Target/Specificity

RPSA antibody is human, mouse and rat reactive.

Reconstitution & Storage

PBS, 0.02% sodium azide. Long term: -20°C; Short term: +4°C. Avoid repeat freeze-thaw cycles.

Precautions

RPSA / Laminin Receptor Antibody (C-Terminus) is for research use only and not for use in diagnostic or therapeutic procedures.

RPSA / Laminin Receptor Antibody (C-Terminus) - Protein Information**Name** RPSA {ECO:0000255|HAMAP-Rule:MF_03016}**Synonyms** LAMBR, LAMR1**Function**

Required for the assembly and/or stability of the 40S ribosomal subunit. Required for the processing of the 20S rRNA- precursor to mature 18S rRNA in a late step of the maturation of 40S ribosomal subunits. Also functions as a cell surface receptor for laminin. Plays a role in cell

adhesion to the basement membrane and in the consequent activation of signaling transduction pathways. May play a role in cell fate determination and tissue morphogenesis. Acts as a PPP1R16B-dependent substrate of PPP1CA.

Cellular Location

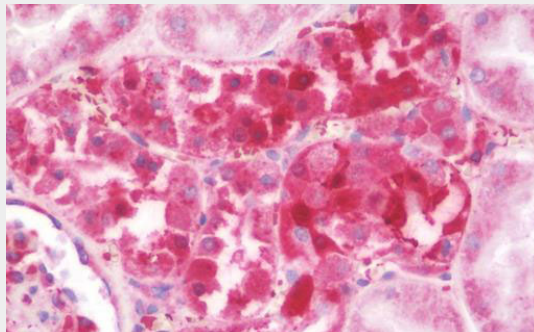
Cell membrane. Cytoplasm. Nucleus {ECO:0000255|HAMAP-Rule:MF_03016}. Note=67LR is found at the surface of the plasma membrane, with its C-terminal laminin-binding domain accessible to extracellular ligands. 37LRP is found at the cell surface, in the cytoplasm and in the nucleus (By similarity) Colocalizes with PPP1R16B in the cell membrane. {ECO:0000255|HAMAP-Rule:MF_03016}

RPSA / Laminin Receptor Antibody (C-Terminus) - Protocols

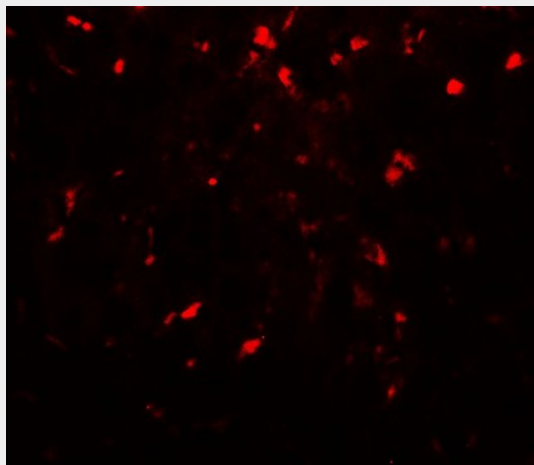
Provided below are standard protocols that you may find useful for product applications.

- [Western Blot](#)
- [Blocking Peptides](#)
- [Dot Blot](#)
- [Immunohistochemistry](#)
- [Immunofluorescence](#)
- [Immunoprecipitation](#)
- [Flow Cytometry](#)
- [Cell Culture](#)

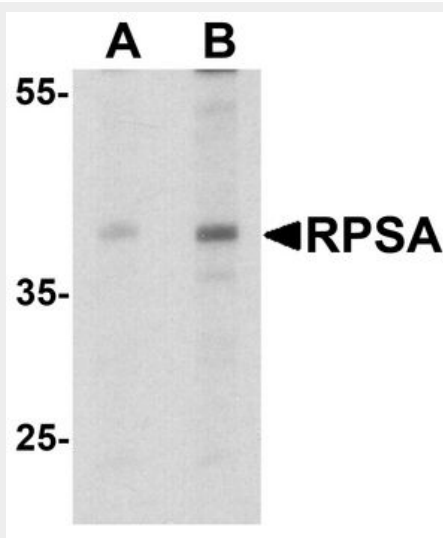
RPSA / Laminin Receptor Antibody (C-Terminus) - Images



Anti-RPSA / Laminin Receptor antibody IHC staining of human kidney.



Immunofluorescence of RPSA in mouse liver tissue with RPSA antibody at 20 µg/mL.



Western blot analysis of RPSA in HepG2 cell lysate with RPSA antibody at (A) 1 and (B) 2 µg/mL.

RPSA / Laminin Receptor Antibody (C-Terminus) - Background

Required for the assembly and/or stability of the 40S ribosomal subunit. Required for the processing of the 20S rRNA- precursor to mature 18S rRNA in a late step of the maturation of 40S ribosomal subunits. Also functions as a cell surface receptor for laminin. Plays a role in cell adhesion to the basement membrane and in the consequent activation of signaling transduction pathways. May play a role in cell fate determination and tissue morphogenesis. Acts as a PPP1R16B-dependent substrate of PPP1CA. Also acts as a receptor for several other ligands, including the pathogenic prion protein, viruses, and bacteria.

RPSA / Laminin Receptor Antibody (C-Terminus) - References

Yow H.,et al.Proc. Natl. Acad. Sci. U.S.A. 85:6394-6398(1988).
van den Ouweland A.M.W.,et al.Nucleic Acids Res. 17:3829-3843(1989).
Satoh K.,et al.Cancer Lett. 62:199-203(1992).
Jackers P.,et al.Oncogene 13:495-503(1996).
Shi Y.,et al.Submitted (APR-2002) to the EMBL/GenBank/DDBJ databases.

RPSA / Laminin Receptor Antibody (C-Terminus) - Citations

- [PKC mediated phosphorylation of TIMAP regulates PP1c activity and endothelial barrier function.](#)