

GRK6 Antibody (C-Terminus)
Rabbit Polyclonal Antibody
Catalog # ALS16787**Specification**

GRK6 Antibody (C-Terminus) - Product Information

Application	IHC, IF, WB
Primary Accession	P43250
Other Accession	2870
Reactivity	Human, Mouse, Rat
Host	Rabbit
Clonality	Polyclonal
Isotype	IgG
Calculated MW	65991

GRK6 Antibody (C-Terminus) - Additional Information**Gene ID** 2870**Other Names**

GRK6, GPRK6

Target/Specificity

GRK6 antibody is human, mouse and rat reactive. Multiple isoforms of GRK6 are known to exist. This antibody is predicted to not cross-react with other members of the GRK protein family.

Reconstitution & Storage

PBS, 0.02% sodium azide. Long term: -20°C; Short term: +4°C. Avoid repeat freeze-thaw cycles.

Precautions

GRK6 Antibody (C-Terminus) is for research use only and not for use in diagnostic or therapeutic procedures.

GRK6 Antibody (C-Terminus) - Protein Information**Name** GRK6**Synonyms** GPRK6**Function**

Specifically phosphorylates the activated forms of G protein- coupled receptors. Such receptor phosphorylation initiates beta- arrestin-mediated receptor desensitization, internalization, and signaling events leading to their desensitization. Seems to be involved in the desensitization of D2-like dopamine receptors in striatum and chemokine receptor CXCR4 which is critical for CXCL12-induced cell chemotaxis (By similarity). Phosphorylates rhodopsin (RHO) (in vitro) and a non G-protein-coupled receptor: LRP6 during Wnt signaling (in vitro).

Cellular Location

Membrane; Lipid-anchor.

Tissue Location

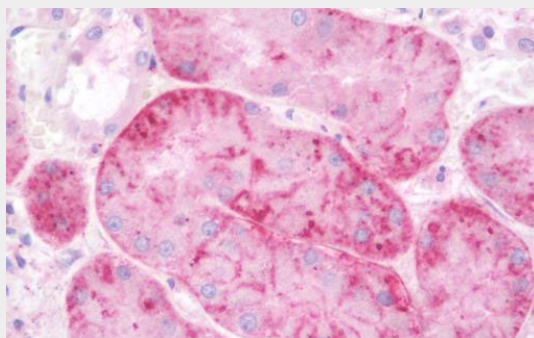
Widely expressed..

GRK6 Antibody (C-Terminus) - Protocols

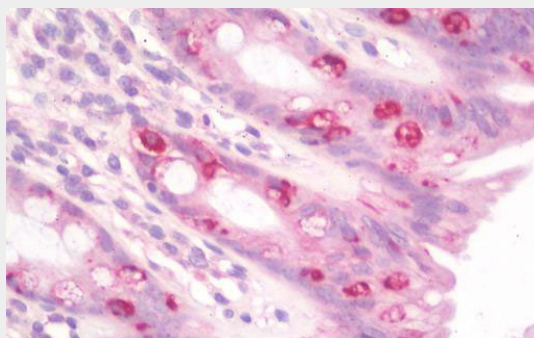
Provided below are standard protocols that you may find useful for product applications.

- [Western Blot](#)
- [Blocking Peptides](#)
- [Dot Blot](#)
- [Immunohistochemistry](#)
- [Immunofluorescence](#)
- [Immunoprecipitation](#)
- [Flow Cytometry](#)
- [Cell Culture](#)

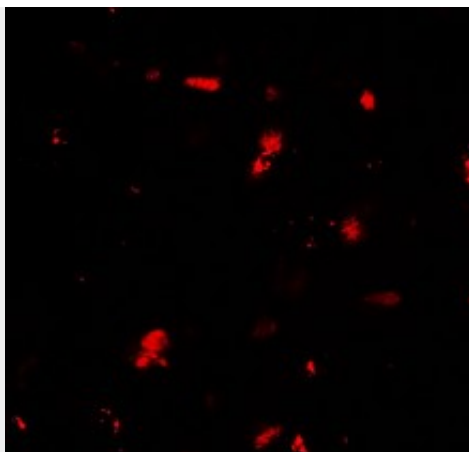
GRK6 Antibody (C-Terminus) - Images



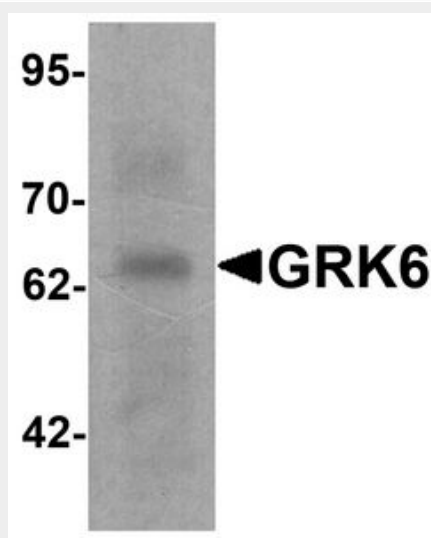
Anti-GRK6 antibody IHC staining of human kidney.



Anti-GRK6 antibody IHC staining of human colon.



Immunofluorescence of GRK6 in human small intestine tissue with GRK6 antibody at 20 µg/mL.



Western blot analysis of GRK6 in rat small intestine tissue lysate with GRK6 antibody at 1 µg/mL.

GRK6 Antibody (C-Terminus) - Background

Specifically phosphorylates the activated forms of G protein-coupled receptors. Such receptor phosphorylation initiates beta-arrestin-mediated receptor desensitization, internalization, and signaling events leading to their desensitization. Seems to be involved in the desensitization of D2-like dopamine receptors in striatum and chemokine receptor CXCR4 which is critical for CXCL12-induced cell chemotaxis (By similarity). Phosphorylates rhodopsin (RHO) (in vitro) and a non G-protein-coupled receptor: LRP6 during Wnt signaling (in vitro).

GRK6 Antibody (C-Terminus) - References

- Benovic J.L.,et al.J. Biol. Chem. 268:19521-19527(1993).
- Premont R.T.,et al.J. Biol. Chem. 274:29381-29389(1999).
- Schmutz J.,et al.Nature 431:268-274(2004).
- Haribabu B.,et al.Proc. Natl. Acad. Sci. U.S.A. 90:9398-9402(1993).
- Stoffel R.H.,et al.J. Biol. Chem. 269:27791-27794(1994).