

VTN / Vitronectin Antibody
Sheep Polyclonal Antibody
Catalog # ALS16805**Specification**

VTN / Vitronectin Antibody - Product Information

Application	IHC-P, E, IE
Primary Accession	P04004
Other Accession	7448
Reactivity	Human
Host	Sheep
Clonality	Polyclonal
Isotype	IgG
Calculated MW	54306
Dilution	IHC-P~~N/A E~~N/A IE~~N/A

VTN / Vitronectin Antibody - Additional Information**Gene ID** 7448**Other Names**

VTN, Epibolin, Serum-spreading factor, VNT, S-protein, Somatomedin B, V75, VN, Complement S-protein, Serum spreading factor, Vitronectin

Target/Specificity

Specific for vitronectin as demonstrated by immunoelectrophoresis. A single precipitin arc is observed with normal plasma, of identical mobility to that obtained with purified vitronectin.

Reconstitution & Storage

0.01 M HEPES, pH 7.4, 0.15 M sodium chloride, 50% glycerol. Long term: -20°C; Short term: +4°C. Avoid repeat freeze-thaw cycles.

Precautions

VTN / Vitronectin Antibody is for research use only and not for use in diagnostic or therapeutic procedures.

VTN / Vitronectin Antibody - Protein Information**Name** VTN**Function**

Vitronectin is a cell adhesion and spreading factor found in serum and tissues. Vitronectin interact with glycosaminoglycans and proteoglycans. Is recognized by certain members of the integrin family and serves as a cell-to-substrate adhesion molecule. Inhibitor of the membrane-damaging effect of the terminal cytolytic complement pathway.

Cellular Location

Secreted, extracellular space

Tissue Location

Expressed in the retina pigment epithelium (at protein level) (PubMed:25136834). Expressed in plasma (at protein level) (PubMed:2448300). Expressed in serum (at protein level) (PubMed:29567995).

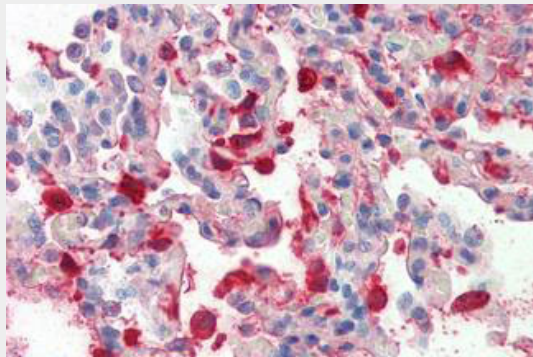
Volume

50 µl

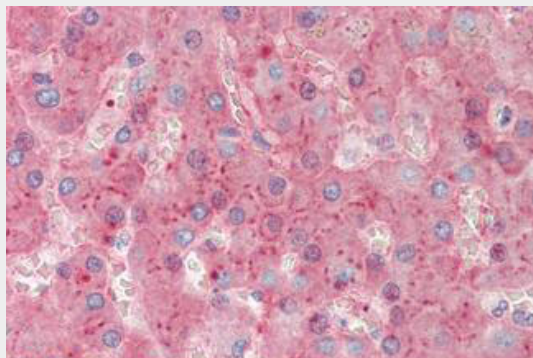
VTN / Vitronectin Antibody - Protocols

Provided below are standard protocols that you may find useful for product applications.

- [Western Blot](#)
- [Blocking Peptides](#)
- [Dot Blot](#)
- [Immunohistochemistry](#)
- [Immunofluorescence](#)
- [Immunoprecipitation](#)
- [Flow Cytometry](#)
- [Cell Culture](#)

VTN / Vitronectin Antibody - Images

Anti-VTN / Vitronectin antibody IHC staining of human lung.



Anti-VTN / Vitronectin antibody IHC staining of human liver.

VTN / Vitronectin Antibody - Background

Vitronectin is a cell adhesion and spreading factor found in serum and tissues. Vitronectin interact with glycosaminoglycans and proteoglycans. Is recognized by certain members of the integrin family and serves as a cell-to-substrate adhesion molecule. Inhibitor of the membrane-damaging effect of the terminal cytolytic complement pathway.

VTN / Vitronectin Antibody - References

Suzuki S.,et al.EMBO J. 4:2519-2524(1985).
Suzuki S.,et al.Submitted (JUN-1986) to the PIR data bank.
Jenne D.E.,et al.EMBO J. 4:3153-3157(1985).
Jenne D.E.,et al.Biochemistry 26:6735-6742(1987).
Ota T.,et al.Nat. Genet. 36:40-45(2004).