

INA / Alpha Internexin Antibody (clone 2E3)
Mouse Monoclonal Antibody
Catalog # ALS16820**Specification**

INA / Alpha Internexin Antibody (clone 2E3) - Product Information

Application	WB, IHC, IHC-P, IF
Primary Accession	Q16352
Other Accession	9118
Reactivity	Human
Host	Mouse
Clonality	Monoclonal
Isotype	IgG1
Calculated MW	55391
Dilution	WB~~1:1000 IHC~~1:100~500 IHC-P~~N/A IF~~1:50~200

INA / Alpha Internexin Antibody (clone 2E3) - Additional Information**Gene ID** 9118**Other Names**

INA, 66 kDa neurofilament protein, Alpha Internexin, Alpha-internexin, Alpha-Inx, NEF5, Neurofilament 5, Neurofilament-66, NF-66, TXBP-1, Neurofilament 5 (66kD)

Target/Specificity

Clone 2E3 reacts with human alpha-internexin and with this protein in all mammalian species tested to date.

Reconstitution & Storage

Tissue culture supernatant. +4°C or -20°C, Avoid repeated freezing and thawing.

Precautions

INA / Alpha Internexin Antibody (clone 2E3) is for research use only and not for use in diagnostic or therapeutic procedures.

INA / Alpha Internexin Antibody (clone 2E3) - Protein Information**Name** INA**Synonyms** NEF5**Function**

Class-IV neuronal intermediate filament that is able to self- assemble. It is involved in the morphogenesis of neurons. It may form an independent structural network without the involvement of other neurofilaments or it may cooperate with NEFL to form the filamentous

backbone to which NEFM and NEFH attach to form the cross-bridges. May also cooperate with the neuronal intermediate filament protein PRPH to form filamentous networks (By similarity).

Tissue Location

Found predominantly in adult CNS.

Volume

50 μ l

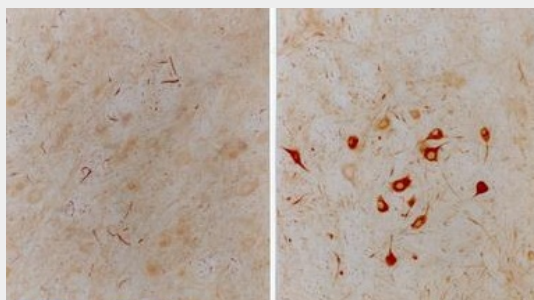
INA / Alpha Internexin Antibody (clone 2E3) - Protocols

Provided below are standard protocols that you may find useful for product applications.

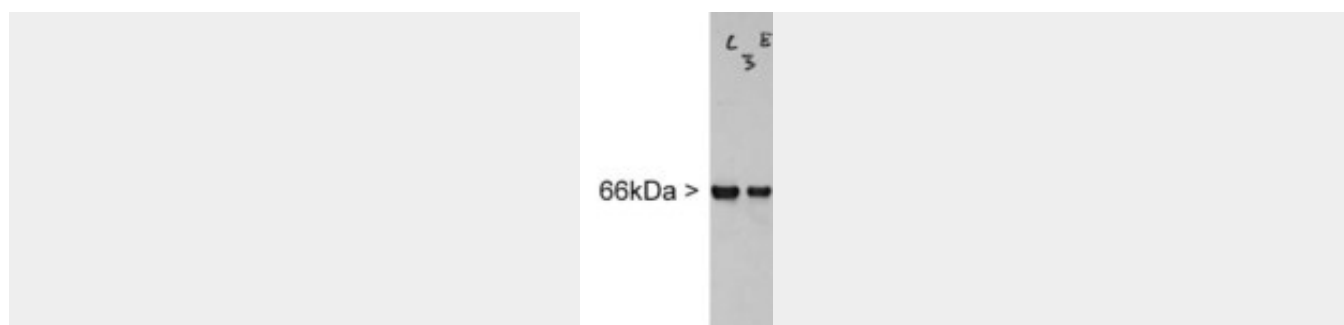
- [Western Blot](#)
- [Blocking Peptides](#)
- [Dot Blot](#)
- [Immunohistochemistry](#)
- [Immunofluorescence](#)
- [Immunoprecipitation](#)
- [Flow Cytometry](#)
- [Cell Culture](#)

INA / Alpha Internexin Antibody (clone 2E3) - Images

Anti-INA / Alpha Internexin antibody IHC staining of human brain, cerebellum.



Rat facial nucleus before (left) and after (right) facial nerve lesion.



Blot of homogenate of rat facial nucleus incubated with INA / Alpha Internexin antibody, which...

INA / Alpha Internexin Antibody (clone 2E3) - Background

Class-IV neuronal intermediate filament that is able to self-assemble. It is involved in the morphogenesis of neurons. It may form an independent structural network without the involvement of other neurofilaments or it may cooperate with NF-L to form the filamentous backbone to which NF-M and NF-H attach to form the cross-bridges.

INA / Alpha Internexin Antibody (clone 2E3) - References

Chan S.-O.,et al.Brain Res. Mol. Brain Res. 29:177-184(1995).
Deloukas P.,et al.Nature 429:375-381(2004).
Mural R.J.,et al.Submitted (SEP-2005) to the EMBL/GenBank/DDBJ databases.
Lubec G.,et al.Submitted (DEC-2008) to UniProtKB.
Matsuoka S.,et al.Science 316:1160-1166(2007).