

CORO1A / Coronin 1a Antibody
Rabbit Polyclonal Antibody
Catalog # ALS16830**Specification**

CORO1A / Coronin 1a Antibody - Product Information

Application	IHC, ICC, WB
Primary Accession	P31146
Other Accession	11151
Reactivity	Human, Rat
Host	Rabbit
Clonality	Polyclonal
Calculated MW	51026

CORO1A / Coronin 1a Antibody - Additional Information**Gene ID** 11151**Other Names**

CORO1A, Clipin-A, Coronin-like protein A, Coronin-like protein p57, CLIPINA, Coronin-1, Coronin-1A, HCORO1, p57, TACO, CLABP, CORO1

Target/Specificity

Human CORO1A / p57

Reconstitution & Storage

Antiserum. +4°C or -20°C, Avoid repeated freezing and thawing.

Precautions

CORO1A / Coronin 1a Antibody is for research use only and not for use in diagnostic or therapeutic procedures.

CORO1A / Coronin 1a Antibody - Protein Information**Name** CORO1A**Synonyms** CORO1**Function**

May be a crucial component of the cytoskeleton of highly motile cells, functioning both in the invagination of large pieces of plasma membrane, as well as in forming protrusions of the plasma membrane involved in cell locomotion. In mycobacteria-infected cells, its retention on the phagosomal membrane prevents fusion between phagosomes and lysosomes.

Cellular Location

Cytoplasm, cytoskeleton. Cytoplasm, cell cortex. Cytoplasmic vesicle, phagosome membrane. Note=In non-infected macrophages, associated with the cortical microtubule network. In mycobacteria-infected macrophages, becomes progressively relocalized and retained around the

mycobacterial phagosomes. Retention on the phagosomal membrane is strictly dependent on mycobacterial viability and not due to impaired acidification (By similarity).

Tissue Location

Expressed in brain, thymus, spleen, bone marrow and lymph node. Low in lung and gut

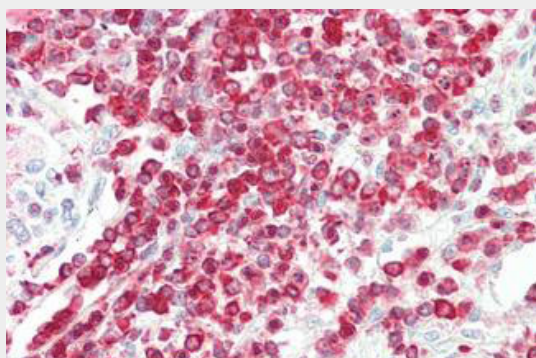
Volume

50 μ l

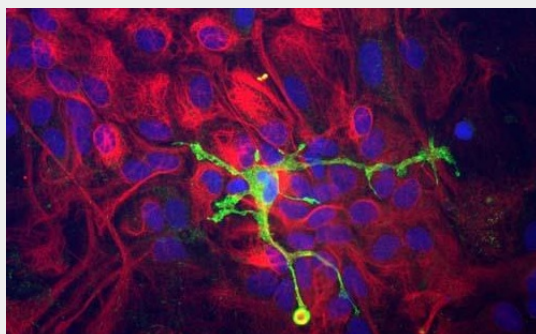
CORO1A / Coronin 1a Antibody - Protocols

Provided below are standard protocols that you may find useful for product applications.

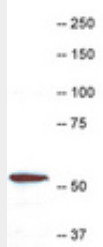
- [Western Blot](#)
- [Blocking Peptides](#)
- [Dot Blot](#)
- [Immunohistochemistry](#)
- [Immunofluorescence](#)
- [Immunoprecipitation](#)
- [Flow Cytometry](#)
- [Cell Culture](#)

CORO1A / Coronin 1a Antibody - Images

Anti-CORO1A / p57 antibody IHC staining of human spleen.



Immunocytochemistry of a mixed neuron/glia culture from newborn rat brain stained with CORO1A /...



Western blot of HL60 cell extract stained with CORO1A / p57 antibody, at dilution of 1:10,000.

CORO1A / Coronin 1a Antibody - Background

May be a crucial component of the cytoskeleton of highly motile cells, functioning both in the invagination of large pieces of plasma membrane, as well as in forming protrusions of the plasma membrane involved in cell locomotion. In mycobacteria- infected cells, its retention on the phagosomal membrane prevents fusion between phagosomes and lysosomes.

CORO1A / Coronin 1a Antibody - References

Suzuki K.,et al.FEBS Lett. 364:283-288(1995).
Grogan A.,et al.Submitted (DEC-1995) to the EMBL/GenBank/DDBJ databases.
Liau G.,et al.Submitted (AUG-1995) to the EMBL/GenBank/DDBJ databases.
Kohchi C.,et al.Submitted (MAR-2002) to the EMBL/GenBank/DDBJ databases.
Ota T.,et al.Nat. Genet. 36:40-45(2004).