

**APOA1 / Apolipoprotein A 1 Antibody**  
**Mouse Monoclonal Antibody**  
**Catalog # ALS16849****Specification**

---

**APOA1 / Apolipoprotein A 1 Antibody - Product Information**

Application	IHC
Primary Accession	<a href="#">P02647</a>
Other Accession	<a href="#">335</a>
Reactivity	Human
Host	Mouse
Clonality	Monoclonal
Isotype	IgG2a,k
Calculated MW	30778

**APOA1 / Apolipoprotein A 1 Antibody - Additional Information****Gene ID** 335**Other Names**

APOA1, ApoA-I, APOAI, Apolipoprotein A-I, Apolipoprotein A1, Apo-AI

**Target/Specificity**

Recognizes Apolipoprotein A-I (Apo A-I). This product does not cross-react with APO A-II or APO B in competitive RIA.

**Reconstitution & Storage**

PBS, 0.1% sodium azide. Long term: -20°C; Short term: +4°C; Avoid freeze-thaw cycles.

**Precautions**

APOA1 / Apolipoprotein A 1 Antibody is for research use only and not for use in diagnostic or therapeutic procedures.

**APOA1 / Apolipoprotein A 1 Antibody - Protein Information****Name** APOA1 ([HGNC:600](#))**Function**

Participates in the reverse transport of cholesterol from tissues to the liver for excretion by promoting cholesterol efflux from tissues and by acting as a cofactor for the lecithin cholesterol acyltransferase (LCAT). As part of the SPAP complex, activates spermatozoa motility.

**Cellular Location**

Secreted.

**Tissue Location**

Major protein of plasma HDL, also found in chylomicrons. Synthesized in the liver and small intestine. The oxidized form at Met-110 and Met-136 is increased in individuals with increased risk

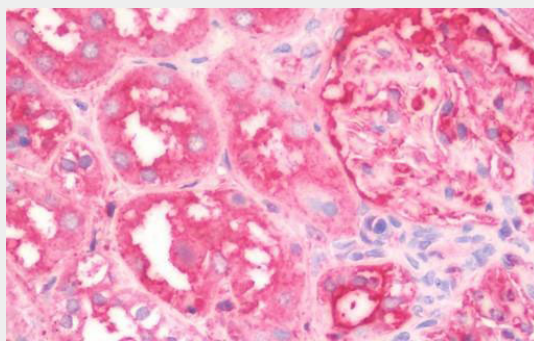
for coronary artery disease, such as in carrier of the eNOSa/b genotype and exposure to cigarette smoking. It is also present in increased levels in aortic lesions relative to native ApoA-I and increased levels are seen with increasing severity of disease

### **APOA1 / Apolipoprotein A 1 Antibody - Protocols**

Provided below are standard protocols that you may find useful for product applications.

- [Western Blot](#)
- [Blocking Peptides](#)
- [Dot Blot](#)
- [Immunohistochemistry](#)
- [Immunofluorescence](#)
- [Immunoprecipitation](#)
- [Flow Cytometry](#)
- [Cell Culture](#)

### **APOA1 / Apolipoprotein A 1 Antibody - Images**



Anti-APOA1 / Apolipoprotein A 1 antibody IHC staining of human kidney.

### **APOA1 / Apolipoprotein A 1 Antibody - Background**

Participates in the reverse transport of cholesterol from tissues to the liver for excretion by promoting cholesterol efflux from tissues and by acting as a cofactor for the lecithin cholesterol acyltransferase (LCAT). As part of the SPAP complex, activates spermatozoa motility.

### **APOA1 / Apolipoprotein A 1 Antibody - References**

Shoulders C.C.,et al.Nucleic Acids Res. 11:2827-2837(1983).  
Cheung P.,et al.Nucleic Acids Res. 11:3703-3715(1983).  
Karathanasis S.K.,et al.Proc. Natl. Acad. Sci. U.S.A. 80:6147-6151(1983).  
Seilhamer J.J.,et al.DNA 3:309-317(1984).  
Sharpe C.R.,et al.Nucleic Acids Res. 12:3917-3932(1984).