

**MAPK4 / ERK4 Antibody (aa1-326)**  
**Rabbit Polyclonal Antibody**  
**Catalog # ALS16883****Specification**

---

**MAPK4 / ERK4 Antibody (aa1-326) - Product Information**

Application	WB, IHC-P, ICC
Primary Accession	<a href="#">P31152</a>
Other Accession	<a href="#">5596</a>
Reactivity	Human
Host	Rabbit
Clonality	Polyclonal
Isotype	IgG
Calculated MW	65922
Dilution	WB~~1:1000 IHC-P~~N/A ICC~~N/A

**MAPK4 / ERK4 Antibody (aa1-326) - Additional Information****Gene ID** 5596**Other Names**

MAPK4, ERK-4, Erk3-related, Erk4, MAP kinase isoform p63, PRKM4, RMNK2, MAP kinase 4, ERK3, MAPK 4, p63-MAPK, p63MAPK

**Target/Specificity**

Human MAPK4 / ERK4

**Reconstitution & Storage**

0.1 M Tris-glycine, pH 7.0, 10% glycerol, 0.01% Thimerosal. Keep as concentrated solution. Aliquot and store at -20°C or below. Avoid multiple freeze-thaw cycles.

**Precautions**

MAPK4 / ERK4 Antibody (aa1-326) is for research use only and not for use in diagnostic or therapeutic procedures.

**MAPK4 / ERK4 Antibody (aa1-326) - Protein Information****Name** MAPK4**Synonyms** ERK4, PRKM4**Function**

Atypical MAPK protein. Phosphorylates microtubule-associated protein 2 (MAP2) and MAPKAPK5. The precise role of the complex formed with MAPKAPK5 is still unclear, but the complex follows a complex set of phosphorylation events: upon interaction with atypical MAPKAPK5, ERK4/MAPK4 is phosphorylated at Ser-186 and then mediates phosphorylation and activation of MAPKAPK5, which

in turn phosphorylates ERK4/MAPK4. May promote entry in the cell cycle (By similarity).

**Cellular Location**

Cytoplasm. Nucleus. Note=Translocates to the cytoplasm following interaction with MAPKAPK5

**Tissue Location**

High expression in heart and brain.

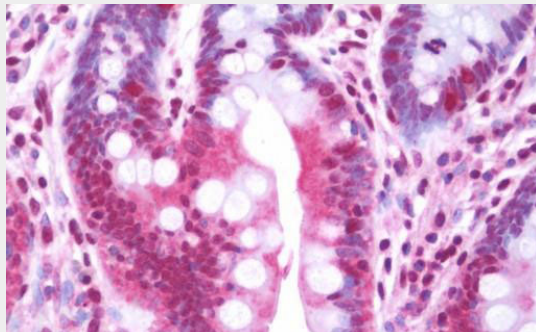
**Volume**

50 µl

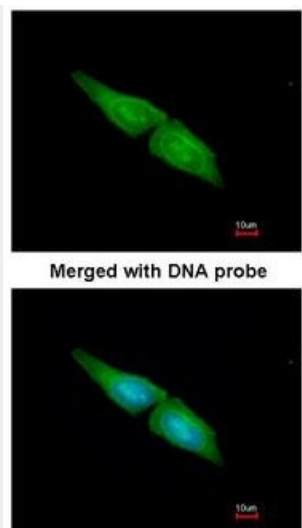
**MAPK4 / ERK4 Antibody (aa1-326) - Protocols**

Provided below are standard protocols that you may find useful for product applications.

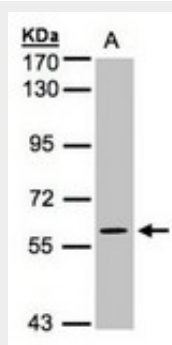
- [Western Blot](#)
- [Blocking Peptides](#)
- [Dot Blot](#)
- [Immunohistochemistry](#)
- [Immunofluorescence](#)
- [Immunoprecipitation](#)
- [Flow Cytometry](#)
- [Cell Culture](#)

**MAPK4 / ERK4 Antibody (aa1-326) - Images**

Anti-MAPK4 / ERK4 antibody IHC staining of human small intestine.



Immunofluorescence of paraformaldehyde-fixed HeLa using MAPK4 antibody at 1:200 dilution.



Sample (30 ug whole cell lysate). A: H1299. 7.5% SDS PAGE. MAPK4 / ERK4 antibody diluted at 1:1000

#### **MAPK4 / ERK4 Antibody (aa1-326) - Background**

Atypical MAPK protein. Phosphorylates microtubule-associated protein 2 (MAP2) and MAPKAPK5. The precise role of the complex formed with MAPKAPK5 is still unclear, but the complex follows a complex set of phosphorylation events: upon interaction with atypical MAPKAPK5, ERK4/MAPK4 is phosphorylated at Ser-186 and then mediates phosphorylation and activation of MAPKAPK5, which in turn phosphorylates ERK4/MAPK4. May promote entry in the cell cycle (By similarity).

#### **MAPK4 / ERK4 Antibody (aa1-326) - References**

- Gonzalez F.A., et al. FEBS Lett. 304:170-178(1992).
- Ota T., et al. Nat. Genet. 36:40-45(2004).
- Nusbaum C., et al. Nature 437:551-555(2005).
- Mural R.J., et al. Submitted (JUL-2005) to the EMBL/GenBank/DDBJ databases.
- Dephoure N., et al. Proc. Natl. Acad. Sci. U.S.A. 105:10762-10767(2008).