

**STAM1 / STAM Antibody (aa16-326)**  
**Rabbit Polyclonal Antibody**  
**Catalog # ALS16901****Specification**

---

**STAM1 / STAM Antibody (aa16-326) - Product Information**

Application	IHC, WB
Primary Accession	<a href="#">O92783</a>
Other Accession	<a href="#">8027</a>
Reactivity	Human
Host	Rabbit
Clonality	Polyclonal
Isotype	IgG
Calculated MW	59180

**STAM1 / STAM Antibody (aa16-326) - Additional Information****Gene ID** 8027**Other Names**

STAM, STAM-1, HSE1 homolog, STAM1

**Target/Specificity**

Human STAM1 / STAM

**Reconstitution & Storage**

0.1 M Tris-glycine, pH 7.0, 10% glycerol, 0.01% Thimerosal. Keep as concentrated solution. Aliquot and store at -20°C or below. Avoid multiple freeze-thaw cycles.

**Precautions**

STAM1 / STAM Antibody (aa16-326) is for research use only and not for use in diagnostic or therapeutic procedures.

**STAM1 / STAM Antibody (aa16-326) - Protein Information****Name** STAM**Synonyms** STAM1**Function**

Involved in intracellular signal transduction mediated by cytokines and growth factors. Upon IL-2 and GM-CSF stimulation, it plays a role in signaling leading to DNA synthesis and MYC induction. May also play a role in T-cell development. Involved in down-regulation of receptor tyrosine kinase via multivesicular body (MVBs) when complexed with HGS (ESCRT-0 complex). The ESCRT-0 complex binds ubiquitin and acts as a sorting machinery that recognizes ubiquitinated receptors and transfers them to further sequential lysosomal sorting/trafficking processes.

**Cellular Location**

Cytoplasm. Early endosome membrane; Peripheral membrane protein; Cytoplasmic side

**Tissue Location**

Ubiquitously expressed.

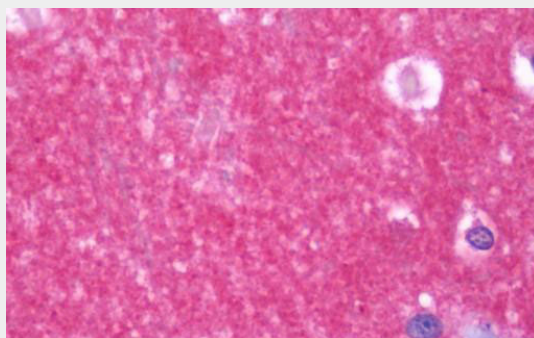
**Volume**

50  $\mu$ l

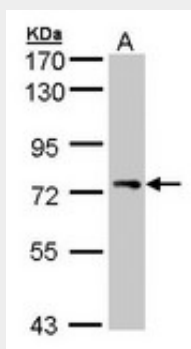
**STAM1 / STAM Antibody (aa16-326) - Protocols**

Provided below are standard protocols that you may find useful for product applications.

- [Western Blot](#)
- [Blocking Peptides](#)
- [Dot Blot](#)
- [Immunohistochemistry](#)
- [Immunofluorescence](#)
- [Immunoprecipitation](#)
- [Flow Cytometry](#)
- [Cell Culture](#)

**STAM1 / STAM Antibody (aa16-326) - Images**

Anti-STAM1 / STAM antibody IHC staining of human brain, cortex.



Sample (30  $\mu$ g of whole cell lysate).

**STAM1 / STAM Antibody (aa16-326) - Background**

Involved in intracellular signal transduction mediated by cytokines and growth factors. Upon IL-2 and GM-CSF stimulation, it plays a role in signaling leading to DNA synthesis and MYC induction. May also play a role in T-cell development. Involved in down-regulation of receptor tyrosine kinase

via multivesicular body (MVBs) when complexed with HGS (ESCRT-0 complex). The ESCRT-0 complex binds ubiquitin and acts as sorting machinery that recognizes ubiquitinated receptors and transfers them to further sequential lysosomal sorting/trafficking processes.

#### **STAM1 / STAM Antibody (aa16-326) - References**

Takeshita T., et al. Biochem. Biophys. Res. Commun. 225:1035-1039(1996).  
Mural R.J., et al. Submitted (SEP-2005) to the EMBL/GenBank/DDBJ databases.  
Steen H., et al. J. Biol. Chem. 277:1031-1039(2002).  
Asao H., et al. J. Biol. Chem. 272:32785-32791(1997).  
Tanaka N., et al. J. Biol. Chem. 274:19129-19135(1999).