

**GOLPH3 Antibody**  
**Rabbit Polyclonal Antibody**  
**Catalog # ALS16914****Specification**

---

**GOLPH3 Antibody - Product Information**

Application	IHC, WB
Primary Accession	<a href="#">Q9H4A6</a>
Other Accession	<a href="#">64083</a>
Reactivity	Human, Mouse
Host	Rabbit
Clonality	Polyclonal
Isotype	IgG
Calculated MW	33811

**GOLPH3 Antibody - Additional Information****Gene ID** 64083**Other Names**

GOLPH3, Coat protein GPP34, Coat-protein, Golgi protein, Golgi phosphoprotein 3, GPP34, Golgi-associated protein, GOPP1, MIDAS

**Target/Specificity**

Human/Mouse GOLPH3.

**Reconstitution & Storage**

PBS, pH 7, 1% BSA, 20% Glycerol, 0.01% Thimerosal. Aliquot and freeze at -20° C. Avoid freeze-thaw cycles.

**Precautions**

GOLPH3 Antibody is for research use only and not for use in diagnostic or therapeutic procedures.

**GOLPH3 Antibody - Protein Information****Name** GOLPH3**Synonyms** GPP34**Function**

Phosphatidylinositol-4-phosphate-binding protein that links Golgi membranes to the cytoskeleton and may participate in the tensile force required for vesicle budding from the Golgi. Thereby, may play a role in Golgi membrane trafficking and could indirectly give its flattened shape to the Golgi apparatus. May also bind to the coatomer to regulate Golgi membrane trafficking. May play a role in anterograde transport from the Golgi to the plasma membrane and regulate secretion. Has also been involved in the control of the localization of Golgi enzymes through interaction with their cytoplasmic part. May play an indirect role in cell migration. Has also been involved in the modulation of mTOR signaling. May also be involved in the regulation of mitochondrial lipids

biosynthesis.

#### Cellular Location

Golgi apparatus, Golgi stack membrane; Peripheral membrane protein; Cytoplasmic side. Golgi apparatus, trans-Golgi network membrane; Peripheral membrane protein; Cytoplasmic side Mitochondrion intermembrane space. Cell membrane Endosome. Note=Phosphatidylinositol 4-phosphate-binding and oligomerization participate in the recruitment onto Golgi membranes.

#### Tissue Location

Detected in muscle fibers of patients with mitochondrial diseases; not detected in normal muscle fibers

#### Volume

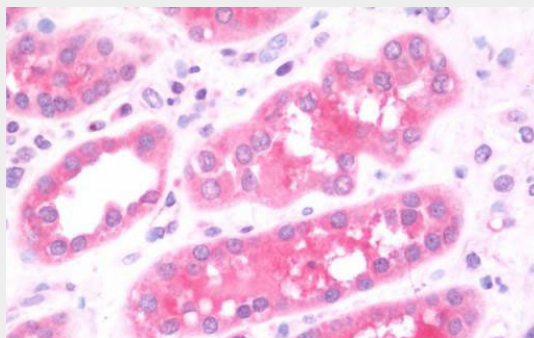
50  $\mu$ l

### GOLPH3 Antibody - Protocols

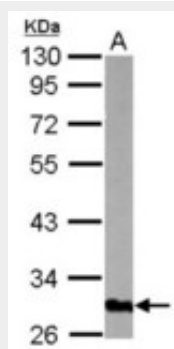
Provided below are standard protocols that you may find useful for product applications.

- [Western Blot](#)
- [Blocking Peptides](#)
- [Dot Blot](#)
- [Immunohistochemistry](#)
- [Immunofluorescence](#)
- [Immunoprecipitation](#)
- [Flow Cytometry](#)
- [Cell Culture](#)

### GOLPH3 Antibody - Images



Anti-GOLPH3 antibody IHC staining of human kidney.



Sample (50 ug of whole cell lysate) A: mouse lung 10% SDS PAGE GOLPH3 antibody diluted at 1:3000

### **GOLPH3 Antibody - Background**

Phosphatidylinositol-4-phosphate-binding protein that links Golgi membranes to the cytoskeleton and may participate in the tensile force required for vesicle budding from the Golgi. Thereby, may play a role in Golgi membrane trafficking and could indirectly give its flattened shape to the Golgi apparatus. May also bind to the coatamer to regulate Golgi membrane trafficking. May play a role in anterograde transport from the Golgi to the plasma membrane and regulate secretion. Has also been involved in the control of the localization of Golgi enzymes through interaction with their cytoplasmic part. May play an indirect role in cell migration. Has also been involved in the modulation of mTOR signaling. May also be involved in the regulation of mitochondrial lipids biosynthesis.

### **GOLPH3 Antibody - References**

Bell A.W.,et al.J. Biol. Chem. 276:5152-5165(2001).  
Ota T.,et al.Nat. Genet. 36:40-45(2004).  
Gregory S.G.,et al.Nature 441:315-321(2006).  
Bechtel S.,et al.BMC Genomics 8:399-399(2007).  
Nakashima-Kamimura N.,et al.J. Cell Sci. 118:5357-5367(2005).