

**PDGF-BB Antibody (aa21-70)**  
**Rabbit Polyclonal Antibody**  
**Catalog # ALS16929****Specification**

---

**PDGF-BB Antibody (aa21-70) - Product Information**

Application	IHC, WB
Primary Accession	<a href="#">P01127</a>
Other Accession	<a href="#">5155</a>
Reactivity	Human, Mouse, Rat
Host	Rabbit
Clonality	Polyclonal
Calculated MW	27283

**PDGF-BB Antibody (aa21-70) - Additional Information****Gene ID** 5155**Other Names**

PDGFB, Becaplermin, PDGF-BB, PDGF-b, SSV, PDGF subunit B, PDGF-2, PDGF2, Proto-oncogene c-Sis, SIS, C-sis, PDGF, B chain

**Target/Specificity**

Human PDGF-BB / PDGFB

**Reconstitution & Storage**

PBS, pH 7.2, 0.05% sodium azide. Store at 4°C short term. Aliquot and store at -20°C long term. Avoid freeze-thaw cycles.

**Precautions**

PDGF-BB Antibody (aa21-70) is for research use only and not for use in diagnostic or therapeutic procedures.

**PDGF-BB Antibody (aa21-70) - Protein Information****Name** PDGFB**Synonyms** PDGF2, SIS**Function**

Growth factor that plays an essential role in the regulation of embryonic development, cell proliferation, cell migration, survival and chemotaxis. Potent mitogen for cells of mesenchymal origin (PubMed:<a href="http://www.uniprot.org/citations/26599395" target="\_blank">26599395</a>). Required for normal proliferation and recruitment of pericytes and vascular smooth muscle cells in the central nervous system, skin, lung, heart and placenta. Required for normal blood vessel development, and for normal development of kidney glomeruli. Plays an important role in wound healing. Signaling is modulated by the formation of heterodimers with PDGFA (By similarity).

**Cellular Location**

Secreted. Note=Released by platelets upon wounding

**Tissue Location**

Expressed at high levels in the heart, brain (sustantia nigra), placenta and fetal kidney. Expressed at moderate levels in the brain (hippocampus), skeletal muscle, kidney and lung

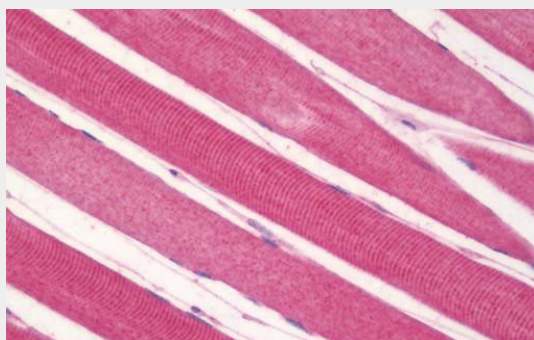
**Volume**

50  $\mu$ l

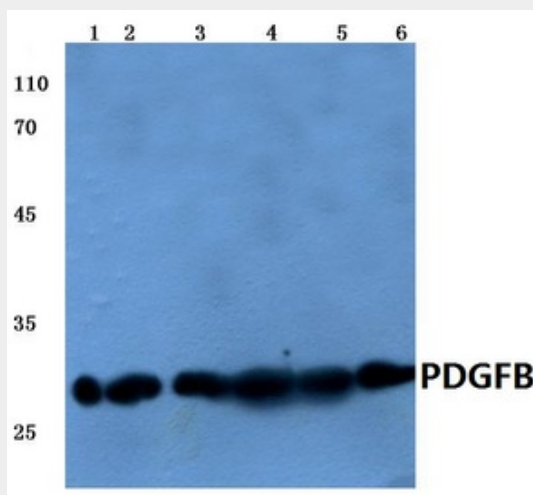
**PDGF-BB Antibody (aa21-70) - Protocols**

Provided below are standard protocols that you may find useful for product applications.

- [Western Blot](#)
- [Blocking Peptides](#)
- [Dot Blot](#)
- [Immunohistochemistry](#)
- [Immunofluorescence](#)
- [Immunoprecipitation](#)
- [Flow Cytometry](#)
- [Cell Culture](#)

**PDGF-BB Antibody (aa21-70) - Images**

Anti-PDGF-BB antibody IHC staining of human skeletal muscle.



Western blot analysis of PDGFB pAb at 1:500.

#### **PDGF-BB Antibody (aa21-70) - Background**

Growth factor that plays an essential role in the regulation of embryonic development, cell proliferation, cell migration, survival and chemotaxis. Potent mitogen for cells of mesenchymal origin. Required for normal proliferation and recruitment of pericytes and vascular smooth muscle cells in the central nervous system, skin, lung, heart and placenta. Required for normal blood vessel development, and for normal development of kidney glomeruli. Plays an important role in wound healing. Signaling is modulated by the formation of heterodimers with PDGFA (By similarity).

#### **PDGF-BB Antibody (aa21-70) - References**

Josephs S.F.,et al.Science 225:636-639(1984).  
Collins T.,et al.Nature 316:748-750(1985).  
Ratner L.,et al.Nucleic Acids Res. 13:5007-5018(1985).  
Rao C.D.,et al.Cold Spring Harb. Symp. Quant. Biol. 51:959-966(1986).  
Rao C.D.,et al.Proc. Natl. Acad. Sci. U.S.A. 83:2392-2396(1986).