

Complement C1s Antibody (clone 2D11)
Mouse Monoclonal Antibody
Catalog # ALS16947**Specification**

Complement C1s Antibody (clone 2D11) - Product Information

Application	IHC, WB, FC
Primary Accession	P09871
Other Accession	716
Reactivity	Human
Host	Mouse
Clonality	Monoclonal
Isotype	IgG2a
Calculated MW	76684

Complement C1s Antibody (clone 2D11) - Additional Information**Gene ID** 716**Other Names**

C1S, C1 esterase, ComplementC1S, Complement 1s, Complement C1s subcomponent

Target/Specificity

Human ComplementC1S

Reconstitution & Storage

PBS, pH 7.3, 1% BSA, 50% glycerol, 0.02% sodium azide. Store at -20°C. Minimize freezing and thawing.

Precautions

Complement C1s Antibody (clone 2D11) is for research use only and not for use in diagnostic or therapeutic procedures.

Complement C1s Antibody (clone 2D11) - Protein Information**Name** C1S**Function**

C1s B chain is a serine protease that combines with C1q and C1r to form C1, the first component of the classical pathway of the complement system. C1r activates C1s so that it can, in turn, activate C2 and C4.

Volume

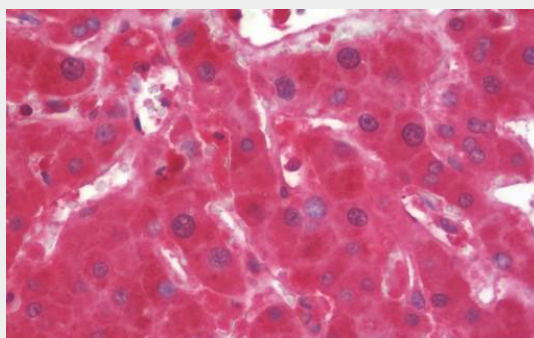
50 µl

Complement C1s Antibody (clone 2D11) - Protocols

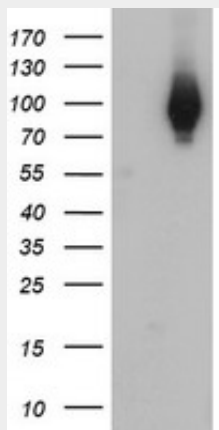
Provided below are standard protocols that you may find useful for product applications.

- [Western Blot](#)
- [Blocking Peptides](#)
- [Dot Blot](#)
- [Immunohistochemistry](#)
- [Immunofluorescence](#)
- [Immunoprecipitation](#)
- [Flow Cytometry](#)
- [Cell Culture](#)

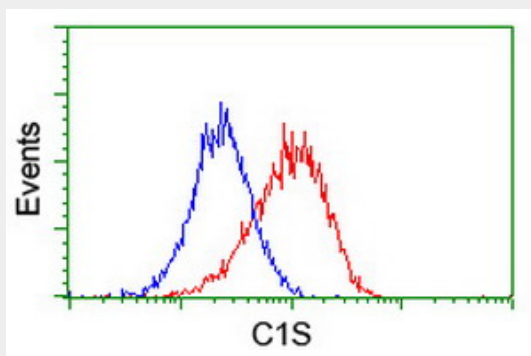
Complement C1s Antibody (clone 2D11) - Images



Anti-Complement C1s antibody IHC staining of human liver.

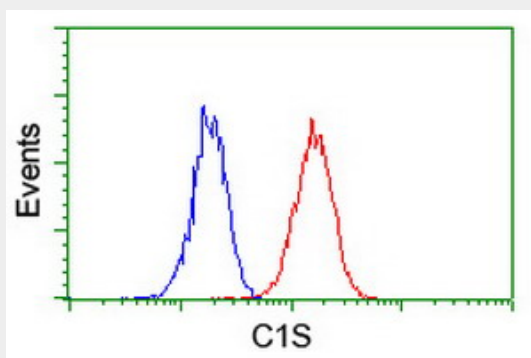


HEK293T cells were transfected with the pCMV6-ENTRY control (Left lane) or pCMV6-ENTRY C1S...



Flow cytometry of HeLa cells, using anti-C1S antibody (Red), compared to a nonspecific

negative...



Flow cytometry of Jurkat cells, using anti-C1S antibody (Red), compared to a nonspecific...

Complement C1s Antibody (clone 2D11) - Background

C1s B chain is a serine protease that combines with C1q and C1r to form C1, the first component of the classical pathway of the complement system. C1r activates C1s so that it can, in turn, activate C2 and C4.

Complement C1s Antibody (clone 2D11) - References

- McKinnon C.M.,et al.Eur. J. Biochem. 169:547-553(1987).
- Tosi M.,et al.Biochemistry 26:8516-8524(1987).
- Kusumoto H.,et al.Proc. Natl. Acad. Sci. U.S.A. 85:7307-7311(1988).
- Mural R.J.,et al.Submitted (SEP-2005) to the EMBL/GenBank/DDBJ databases.
- Endo Y.,et al.J. Immunol. 161:4924-4930(1998).