

**Complement C3 Antibody (aa1580-1592)**  
**Goat Polyclonal Antibody**  
**Catalog # ALS16963****Specification**

---

**Complement C3 Antibody (aa1580-1592) - Product Information**

Application	IHC-P, E
Primary Accession	<a href="#">P01024</a>
Other Accession	<a href="#">718</a>
Reactivity	Human, Monkey
Host	Goat
Clonality	Polyclonal
Calculated MW	187148
Dilution	IHC-P~~N/A E~~N/A

**Complement C3 Antibody (aa1580-1592) - Additional Information****Gene ID** 718**Other Names**

C3, AHUS5, ARMD9, Complement component C3, CPAMD1, Complement C3, ASP, Complement component 3

**Target/Specificity**

Human Complement C3. This antibody is expected to recognize the C3 alpha chain, C3b alpha chain and the C3c alpha chain fragment 2.

**Reconstitution & Storage**

Tris-buffered saline, pH 7.3, 0.5% BSA, 0.02% sodium azide. Store at -20°C. Minimize freezing and thawing.

**Precautions**

Complement C3 Antibody (aa1580-1592) is for research use only and not for use in diagnostic or therapeutic procedures.

**Complement C3 Antibody (aa1580-1592) - Protein Information****Name** C3 {ECO:0000303|PubMed:2579379, ECO:0000312|HGNC:HGNC:1318}**Function**

Precursor of non-enzymatic components of the classical, alternative, lectin and GZMK complement pathways, which consist in a cascade of proteins that leads to phagocytosis and breakdown of pathogens and signaling that strengthens the adaptive immune system.

**Cellular Location**

Secreted. [C3a anaphylatoxin]: Secreted

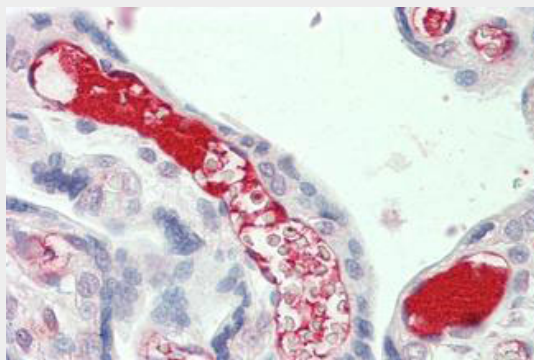
**Tissue Location**

Plasma..

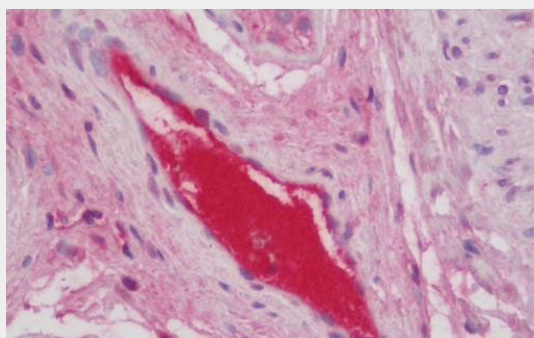
**Complement C3 Antibody (aa1580-1592) - Protocols**

Provided below are standard protocols that you may find useful for product applications.

- [Western Blot](#)
- [Blocking Peptides](#)
- [Dot Blot](#)
- [Immunohistochemistry](#)
- [Immunofluorescence](#)
- [Immunoprecipitation](#)
- [Flow Cytometry](#)
- [Cell Culture](#)

**Complement C3 Antibody (aa1580-1592) - Images**

Anti-Complement C3 antibody IHC staining of human placenta.



Anti-Complement C3 antibody IHC staining of human testis.

**Complement C3 Antibody (aa1580-1592) - Background**

C3 plays a central role in the activation of the complement system. Its processing by C3 convertase is the central reaction in both classical and alternative complement pathways. After activation C3b can bind covalently, via its reactive thioester, to cell surface carbohydrates or immune aggregates. C3-beta-c: Acts as a chemoattractant for neutrophils in chronic inflammation.

**Complement C3 Antibody (aa1580-1592) - References**

de Bruijn M.H.L., et al. Proc. Natl. Acad. Sci. U.S.A. 82:708-712(1985).

Mural R.J.,et al.Submitted (SEP-2005) to the EMBL/GenBank/DDBJ databases.

Baldo A.,et al.J. Clin. Invest. 92:1543-1547(1993).

Hugli T.E.,et al.J. Biol. Chem. 250:8293-8301(1975).

Oxvig C.,et al.J. Biol. Chem. 270:13645-13651(1995).