

**NCL / Nucleolin Antibody (clone 4E2)**  
**Mouse Monoclonal Antibody**  
**Catalog # ALS16979****Specification**

---

**NCL / Nucleolin Antibody (clone 4E2) - Product Information**

Application	IHC, WB
Primary Accession	<a href="#">P19338</a>
Other Accession	<a href="#">4691</a>
Reactivity	Human
Host	Mouse
Clonality	Monoclonal
Isotype	IgG1
Calculated MW	76614

**NCL / Nucleolin Antibody (clone 4E2) - Additional Information****Gene ID** 4691**Other Names**

NCL, Nucleolin, C23, Protein C23

**Target/Specificity**

Human Nucleolin

**Reconstitution & Storage**

PBS, pH 7.2, 50% glycerol. Store at -20°C.

**Precautions**

NCL / Nucleolin Antibody (clone 4E2) is for research use only and not for use in diagnostic or therapeutic procedures.

**NCL / Nucleolin Antibody (clone 4E2) - Protein Information****Name** NCL**Function**

Nucleolin is the major nucleolar protein of growing eukaryotic cells. It is found associated with intranucleolar chromatin and pre-ribosomal particles. It induces chromatin decondensation by binding to histone H1. It is thought to play a role in pre-rRNA transcription and ribosome assembly. May play a role in the process of transcriptional elongation. Binds RNA oligonucleotides with 5'-UUAGGG- 3' repeats more tightly than the telomeric single-stranded DNA 5'- TTAGGG-3' repeats.

**Cellular Location**

Nucleus, nucleolus. Cytoplasm. Note=Localized in cytoplasmic mRNP granules containing untranslated mRNAs

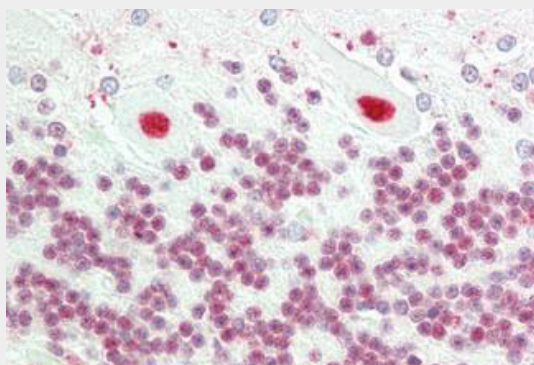
**Volume**  
50 µl

## NCL / Nucleolin Antibody (clone 4E2) - Protocols

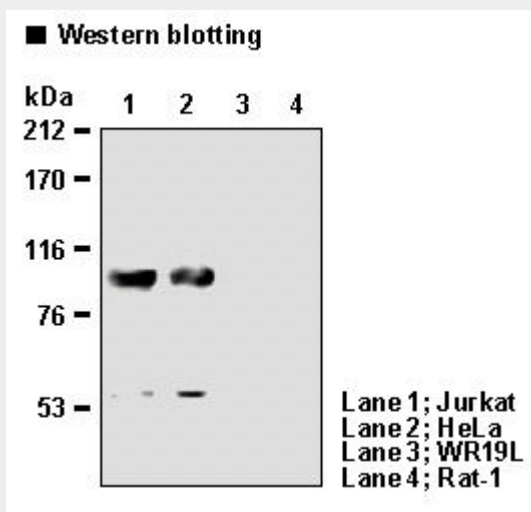
Provided below are standard protocols that you may find useful for product applications.

- [Western Blot](#)
- [Blocking Peptides](#)
- [Dot Blot](#)
- [Immunohistochemistry](#)
- [Immunofluorescence](#)
- [Immunoprecipitation](#)
- [Flow Cytometry](#)
- [Cell Culture](#)

## NCL / Nucleolin Antibody (clone 4E2) - Images



Human Brain, Cerebellum: Formalin-Fixed, Paraffin-Embedded (FFPE)



Lane1;Jurkat; Lant2: Hela; Lane3: WR19L; Lane4: Rat-1

## NCL / Nucleolin Antibody (clone 4E2) - Background

Nucleolin is the major nucleolar protein of growing eukaryotic cells. It is found associated with intranucleolar chromatin and pre-ribosomal particles. It induces chromatin decondensation by

binding to histone H1. It is thought to play a role in pre-rRNA transcription and ribosome assembly. May play a role in the process of transcriptional elongation. Binds RNA oligonucleotides with 5'-UUAGGG-3' repeats more tightly than the telomeric single-stranded DNA 5'-TTAGGG-3' repeats.

**NCL / Nucleolin Antibody (clone 4E2) - References**

- Srivastava M.,et al.FEBS Lett. 250:99-105(1989).  
Srivastava M.,et al.J. Biol. Chem. 265:14922-14931(1990).  
Ota T.,et al.Nat. Genet. 36:40-45(2004).  
Hillier L.W.,et al.Nature 434:724-731(2005).  
Krantz S.,et al.Biochim. Biophys. Acta 1266:109-112(1995).