

RDX / Radixin Antibody (aa142-191)
Rabbit Polyclonal Antibody
Catalog # ALS16983**Specification**

RDX / Radixin Antibody (aa142-191) - Product Information

Application	WB, IHC-P, E
Primary Accession	P35241
Other Accession	5962
Reactivity	Human, Mouse, Rat
Host	Rabbit
Clonality	Polyclonal
Isotype	IgG
Calculated MW	68564
Dilution	WB~~1:1000 IHC-P~~N/A E~~N/A

RDX / Radixin Antibody (aa142-191) - Additional Information

Gene ID 5962

Other Names

RDX, Radixin, DFNB24

Target/Specificity

RDX Antibody detects endogenous levels of total RDX protein.

Reconstitution & Storage

PBS (without Mg²⁺, Ca²⁺), pH 7.4, 150 mM sodium chloride, 0.02% sodium azide, 50% glycerol.
Store at -20°C for up to one year.

Precautions

RDX / Radixin Antibody (aa142-191) is for research use only and not for use in diagnostic or therapeutic procedures.

RDX / Radixin Antibody (aa142-191) - Protein Information

Name RDX

Function

Probably plays a crucial role in the binding of the barbed end of actin filaments to the plasma membrane.

Cellular Location

Cell membrane; Peripheral membrane protein; Cytoplasmic side. Cytoplasm, cytoskeleton. Cleavage furrow. Cell projection, microvillus {ECO:0000250|UniProtKB:P26043}. Cell projection, stereocilium {ECO:0000250|UniProtKB:P26043}. Note=Enriched at the stereocilium base with very

low levels in the shaft of stereociliary bundles (By similarity). Highly concentrated in the undercoat of the cell-to-cell adherens junction and the cleavage furrow in the interphase and mitotic phase, respectively {ECO:0000250|UniProtKB:P26043}

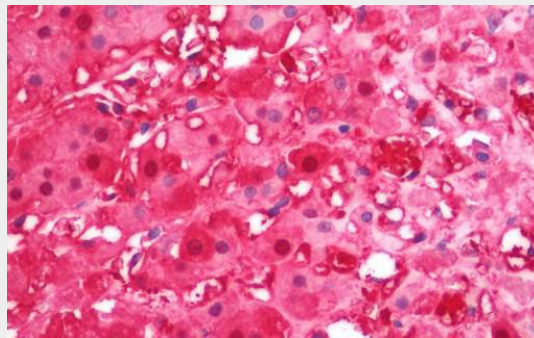
Volume
50 µl

RDX / Radixin Antibody (aa142-191) - Protocols

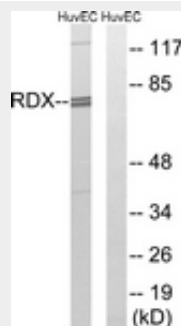
Provided below are standard protocols that you may find useful for product applications.

- [Western Blot](#)
- [Blocking Peptides](#)
- [Dot Blot](#)
- [Immunohistochemistry](#)
- [Immunofluorescence](#)
- [Immunoprecipitation](#)
- [Flow Cytometry](#)
- [Cell Culture](#)

RDX / Radixin Antibody (aa142-191) - Images



Anti-RDX / Radixin antibody IHC staining of human adrenal.



Western blot of extracts from HUVEC cells, using RDX Antibody.

RDX / Radixin Antibody (aa142-191) - Background

Probably plays a crucial role in the binding of the barbed end of actin filaments to the plasma membrane.

RDX / Radixin Antibody (aa142-191) - References

Wilgenbus K.K.,et al.Genomics 16:199-206(1993).
Ota T.,et al.Nat. Genet. 36:40-45(2004).
Khan S.Y.,et al.Hum. Mutat. 28:417-423(2007).
Taylor T.D.,et al.Nature 440:497-500(2006).
Mural R.J.,et al.Submitted (JUL-2005) to the EMBL/GenBank/DDBJ databases.