

**COL8A1 / Collagen VIII Alpha 1 Antibody (aa575-743)**  
**Rabbit Polyclonal Antibody**  
**Catalog # ALS17010****Specification**

---

**COL8A1 / Collagen VIII Alpha 1 Antibody (aa575-743) - Product Information**

Application	IHC, WB
Primary Accession	<a href="#">P27658</a>
Other Accession	<a href="#">1295</a>
Reactivity	Human
Host	Rabbit
Clonality	Polyclonal
Isotype	IgG
Calculated MW	73364

**COL8A1 / Collagen VIII Alpha 1 Antibody (aa575-743) - Additional Information****Gene ID** [1295](#)**Other Names**

COL8A1, Collagen VIII Alpha 1, Endothelial collagen, C3orf7, Collagen alpha-1(VIII) chain, Collagen, type VIII, alpha 1

**Target/Specificity**

Human COL8A1 / Collagen VIII

**Reconstitution & Storage**

PBS, pH 7.4, 0.02% sodium azide, 50% glycerol. Store frozen product at or below -20°C. Thawed product may be stored for 2-4 weeks at 4°C. For optimal storage, aliquot to smaller portions and store at -20°C to -70°C. Avoid repeated freeze/thaw cycles.

**Precautions**

COL8A1 / Collagen VIII Alpha 1 Antibody (aa575-743) is for research use only and not for use in diagnostic or therapeutic procedures.

**COL8A1 / Collagen VIII Alpha 1 Antibody (aa575-743) - Protein Information****Name** COL8A1**Synonyms** C3orf7**Function**

Macromolecular component of the subendothelium. Major component of the Descemet's membrane (basement membrane) of corneal endothelial cells. Also a component of the endothelia of blood vessels. Necessary for migration and proliferation of vascular smooth muscle cells and thus, has a potential role in the maintenance of vessel wall integrity and structure, in particular in atherogenesis.

**Cellular Location**

Secreted, extracellular space, extracellular matrix, basement membrane

**Tissue Location**

Expressed primarily in the subendothelium of large blood vessels. Also expressed in arterioles and venules in muscle, heart, kidney, spleen, umbilical cord, liver and lung and is also found in connective tissue layers around hair follicles, around nerve bundles in muscle, in the dura of the optic nerve, in cornea and sclera, and in the perichondrium of cartilaginous tissues. In the kidney, expressed in mesangial cells, glomerular endothelial cells, and tubular epithelial cells. Also expressed in mast cells, and in astrocytes during the repair process. Expressed in Descemet's membrane. Specifically expressed in peritoneal fibroblasts and mesothelial cells

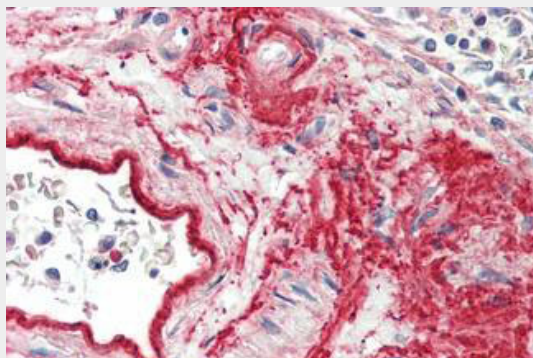
**Volume**

50  $\mu$ l

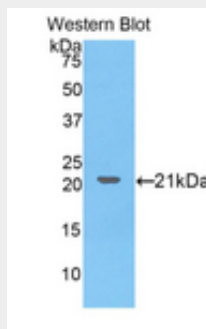
**COL8A1 / Collagen VIII Alpha 1 Antibody (aa575-743) - Protocols**

Provided below are standard protocols that you may find useful for product applications.

- [Western Blot](#)
- [Blocking Peptides](#)
- [Dot Blot](#)
- [Immunohistochemistry](#)
- [Immunofluorescence](#)
- [Immunoprecipitation](#)
- [Flow Cytometry](#)
- [Cell Culture](#)

**COL8A1 / Collagen VIII Alpha 1 Antibody (aa575-743) - Images**

Human Spleen, Vessels: Formalin-Fixed, Paraffin-Embedded (FFPE)



Western blot of recombinant COL8A1 / Collagen VIII.

#### **COL8A1 / Collagen VIII Alpha 1 Antibody (aa575-743) - Background**

Macromolecular component of the subendothelium. Major component of the Descemet's membrane (basement membrane) of corneal endothelial cells. Also component of the endothelia of blood vessels. Necessary for migration and proliferation of vascular smooth muscle cells and thus, has a potential role in the maintenance of vessel wall integrity and structure, in particular in atherogenesis.

#### **COL8A1 / Collagen VIII Alpha 1 Antibody (aa575-743) - References**

Muragaki Y., et al. Eur. J. Biochem. 197:615-622(1991).  
Kalnine N., et al. Submitted (AUG-2003) to the EMBL/GenBank/DDBJ databases.  
Mural R.J., et al. Submitted (SEP-2005) to the EMBL/GenBank/DDBJ databases.  
Kittelberger R., et al. Connect. Tissue Res. 24:303-318(1990).  
Kittelberger R., et al. Biochim. Biophys. Acta 1139:295-299(1992).