

**PLTP Antibody (aa470-490)**  
**Rabbit Polyclonal Antibody**  
**Catalog # ALS17103****Specification**

---

**PLTP Antibody (aa470-490) - Product Information**

Application	IHC
Primary Accession	<a href="#">P55058</a>
Other Accession	<a href="#">5360</a>
Reactivity	Human
Host	Rabbit
Clonality	Polyclonal
Isotype	IgG
Calculated MW	54739

**PLTP Antibody (aa470-490) - Additional Information****Gene ID** 5360**Other Names**

PLTP, BPI fold containing family E, BPIFE, Phospholipid transfer protein, Lipid transfer protein II, HDLCQ9

**Target/Specificity**

Specific for human Phospholipid Transfer Protein (PLTP), ~78kD. Based on sequence homology, is expected to recognize mouse PLTP.

**Reconstitution & Storage**

0.02% sodium azide. Long term: -20°C; Short term: +4°C. Avoid repeat freeze-thaw cycles.

**Precautions**

PLTP Antibody (aa470-490) is for research use only and not for use in diagnostic or therapeutic procedures.

**PLTP Antibody (aa470-490) - Protein Information****Name** PLTP**Function**

Mediates the transfer of phospholipids and free cholesterol from triglyceride-rich lipoproteins (low density lipoproteins or LDL and very low density lipoproteins or VLDL) into high-density lipoproteins (HDL) as well as the exchange of phospholipids between triglyceride-rich lipoproteins themselves (PubMed: [7654777](http://www.uniprot.org/citations/7654777)), PubMed: [9132017](http://www.uniprot.org/citations/9132017), PubMed: [11013307](http://www.uniprot.org/citations/11013307), PubMed: [19321130](http://www.uniprot.org/citations/19321130), PubMed: [21515415](http://www.uniprot.org/citations/21515415), PubMed: [29883800](http://www.uniprot.org/citations/29883800))

target="\_blank">29883800</a>). Facilitates the transfer of a spectrum of different lipid molecules, including diacylglycerol, phosphatidic acid, sphingomyelin, phosphatidylcholine, phosphatidylinositol, phosphatidylglycerol, cerebroside and phosphatidyl ethanolamine (PubMed:<a href="http://www.uniprot.org/citations/9132017" target="\_blank">9132017</a>). Plays an important role in HDL remodeling which involves modulating the size and composition of HDL (PubMed:<a href="http://www.uniprot.org/citations/29883800" target="\_blank">29883800</a>). Also plays a key role in the uptake of cholesterol from peripheral cells and tissues that is subsequently transported to the liver for degradation and excretion (PubMed:<a href="http://www.uniprot.org/citations/21736953" target="\_blank">21736953</a>). Two distinct forms of PLTP exist in plasma: an active form that can transfer phosphatidylcholine from phospholipid vesicles to HDL, and an inactive form that lacks this capability (PubMed:<a href="http://www.uniprot.org/citations/11013307" target="\_blank">11013307</a>).

### Cellular Location

Secreted. Nucleus. Note=Nuclear export is XPO1/CRM1- dependent.

### Tissue Location

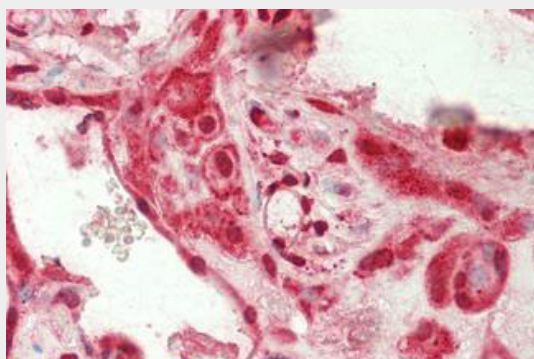
Widely expressed. Highest level of expression in the ovary, thymus and placenta, with moderate levels found in the pancreas, small intestine, testis, lung and prostate. Low level expression in the kidney, liver and spleen, with very low levels found in the heart, colon, skeletal muscle, leukocytes and brain. Expressed in the cortical neurons.

### PLTP Antibody (aa470-490) - Protocols

Provided below are standard protocols that you may find useful for product applications.

- [Western Blot](#)
- [Blocking Peptides](#)
- [Dot Blot](#)
- [Immunohistochemistry](#)
- [Immunofluorescence](#)
- [Immunoprecipitation](#)
- [Flow Cytometry](#)
- [Cell Culture](#)

### PLTP Antibody (aa470-490) - Images



Human Placenta: Formalin-Fixed, Paraffin-Embedded (FFPE)

### PLTP Antibody (aa470-490) - Background

Facilitates the transfer of a spectrum of different lipid molecules, including diacylglycerol,

phosphatidic acid, sphingomyelin, phosphatidylcholine, phosphatidylglycerol, cerebroside and phosphatidyl ethanolamine. Essential for the transfer of excess surface lipids from triglyceride-rich lipoproteins to HDL, thereby facilitating the formation of smaller lipoprotein remnants, contributing to the formation of LDL, and assisting in the maturation of HDL particles. PLTP also plays a key role in the uptake of cholesterol from peripheral cells and tissues that is subsequently transported to the liver for degradation and excretion. Two distinct forms of PLTP exist in plasma: an active form that can transfer PC from phospholipid vesicles to high-density lipoproteins (HDL), and an inactive form that lacks this capability.

#### **PLTP Antibody (aa470-490) - References**

Day J.R.,et al.J. Biol. Chem. 269:9388-9391(1994).  
Kobayashi Y.,et al.Submitted (DEC-2001) to the EMBL/GenBank/DDBJ databases.  
Ota T.,et al.Nat. Genet. 36:40-45(2004).  
Deloukas P.,et al.Nature 414:865-871(2001).  
Mural R.J.,et al.Submitted (SEP-2005) to the EMBL/GenBank/DDBJ databases.