

KLF17 Antibody (C-Terminus)
Rabbit Polyclonal Antibody
Catalog # ALS17119**Specification**

KLF17 Antibody (C-Terminus) - Product Information

Application	IHC
Primary Accession	Q5JT82
Other Accession	128209
Reactivity	Human, Mouse, Rat
Host	Rabbit
Clonality	Polyclonal
Calculated MW	42577

KLF17 Antibody (C-Terminus) - Additional Information**Gene ID** 128209**Other Names**

KLF17, Kruppel-like factor 17, Novel zinc-finger protein, Zfp393, ZNF393, RP4-675G8.1, Zinc finger protein 393, Krueppel-like factor 17

Target/Specificity

KLF17 antibody is human, mouse and rat reactive. At least two isoforms of KLF17 are known to exist; this antibody will only detect the large isoform. KLF17 antibody is predicted to not cross-react with other KLF proteins.

Reconstitution & Storage

PBS, 0.02% sodium azide. Long term: -20°C; Short term: +4°C. Avoid repeat freeze-thaw cycles.

Precautions

KLF17 Antibody (C-Terminus) is for research use only and not for use in diagnostic or therapeutic procedures.

KLF17 Antibody (C-Terminus) - Protein Information**Name** KLF17**Synonyms** ZNF393**Function**

Transcription repressor that binds to the promoter of target genes and prevents their expression. Acts as a negative regulator of epithelial-mesenchymal transition and metastasis in breast cancer. Specifically binds the 5'-CACCC-3' sequence in the promoter of ID1, a key metastasis regulator in breast cancer, and repress its expression. May be a germ cell-specific transcription factor that plays important roles in spermatid differentiation and oocyte development (By similarity).

Cellular Location

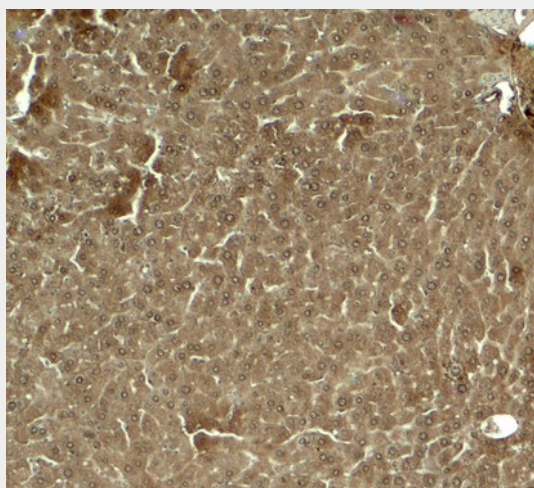
Nucleus.

KLF17 Antibody (C-Terminus) - Protocols

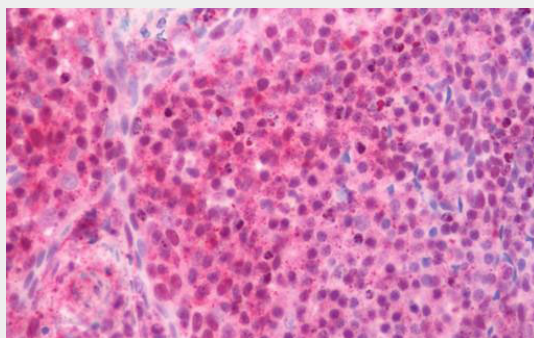
Provided below are standard protocols that you may find useful for product applications.

- [Western Blot](#)
- [Blocking Peptides](#)
- [Dot Blot](#)
- [Immunohistochemistry](#)
- [Immunofluorescence](#)
- [Immunoprecipitation](#)
- [Flow Cytometry](#)
- [Cell Culture](#)

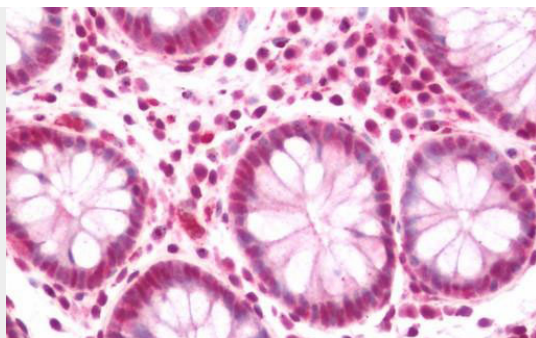
KLF17 Antibody (C-Terminus) - Images



Immunohistochemistry of KLF17 in mouse liver tissue with KLF17 antibody at 5 ug/ml.



Human Tonsil: Formalin-Fixed, Paraffin-Embedded (FFPE)



Human Colon: Formalin-Fixed, Paraffin-Embedded (FFPE)

KLF17 Antibody (C-Terminus) - Background

Transcription repressor that binds to the promoter of target genes and prevents their expression. Acts as a negative regulator of epithelial-mesenchymal transition and metastasis in breast cancer. Specifically binds the 5'-CACCC-3' sequence in the promoter of ID1, a key metastasis regulator in breast cancer, and repress its expression. May be a germ cell-specific transcription factor that plays important roles in spermatid differentiation and oocyte development (By similarity).

KLF17 Antibody (C-Terminus) - References

Ota T.,et al.Nat. Genet. 36:40-45(2004).
Gregory S.G.,et al.Nature 441:315-321(2006).
van Vliet J.,et al.Genomics 87:474-482(2006).