

PLEKHA8 Antibody (aa122-400)
Rabbit Polyclonal Antibody
Catalog # ALS17129**Specification**

PLEKHA8 Antibody (aa122-400) - Product Information

Application	IHC-P, WB
Primary Accession	O96JA3
Other Accession	84725
Reactivity	Human
Host	Rabbit
Clonality	Polyclonal
Calculated MW	58261

PLEKHA8 Antibody (aa122-400) - Additional Information**Gene ID** 84725**Other Names**

PLEKHA8, FAPP2, FAPP-2, HFAPP2

Target/Specificity

Human PLEKHA8.

Reconstitution & Storage

PBS, pH 7.4, 0.02% sodium azide. Store at -20°C for up to one year.

Precautions

PLEKHA8 Antibody (aa122-400) is for research use only and not for use in diagnostic or therapeutic procedures.

PLEKHA8 Antibody (aa122-400) - Protein Information**Name** PLEKHA8**Synonyms** FAPP2**Function**

Cargo transport protein that is required for apical transport from the Golgi complex. Transports AQP2 from the trans-Golgi network (TGN) to sites of AQP2 phosphorylation. Mediates the non-vesicular transport of glucosylceramide (GlcCer) from the trans-Golgi network (TGN) to the plasma membrane and plays a pivotal role in the synthesis of complex glycosphingolipids. Binding of both phosphatidylinositol 4- phosphate (PIP) and ARF1 are essential for the GlcCer transfer ability. Also required for primary cilium formation, possibly by being involved in the transport of raft lipids to the apical membrane, and for membrane tubulation.

Cellular Location

Golgi apparatus, trans-Golgi network membrane. Membrane; Peripheral membrane protein.

Note=Binds through its PH domain to PtdIns(4)P and ARF1, and subsequently localizes to TGN exit sites

Tissue Location

Expressed in kidney cell lines.

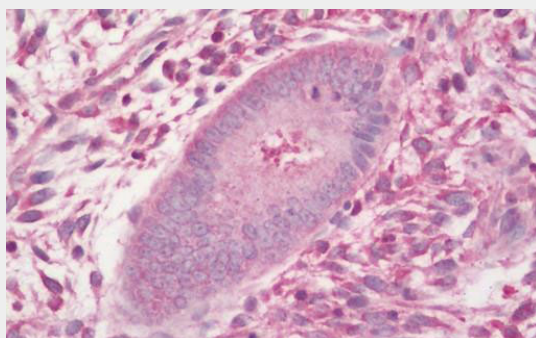
Volume

50 µl

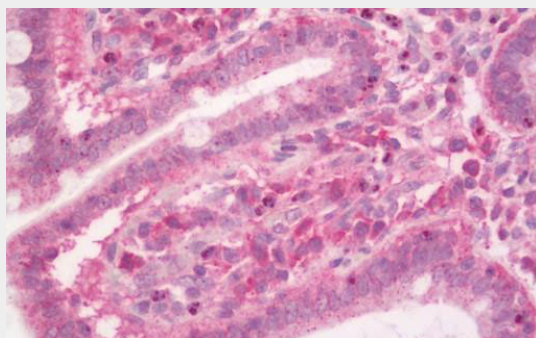
PLEKHA8 Antibody (aa122-400) - Protocols

Provided below are standard protocols that you may find useful for product applications.

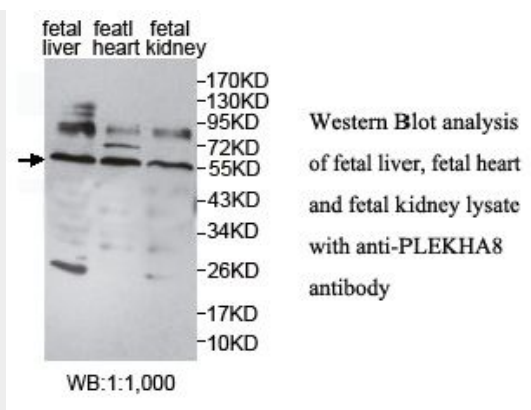
- [Western Blot](#)
- [Blocking Peptides](#)
- [Dot Blot](#)
- [Immunohistochemistry](#)
- [Immunofluorescence](#)
- [Immunoprecipitation](#)
- [Flow Cytometry](#)
- [Cell Culture](#)

PLEKHA8 Antibody (aa122-400) - Images

Human Uterus, Endometrium: Formalin-Fixed, Paraffin-Embedded (FFPE)



Human Small Intestine: Formalin-Fixed, Paraffin-Embedded (FFPE)



western blot analysis of fetal liver, fetal heart and fetal kidney lysate with anti-plekha8 antibody

PLEKHA8 Antibody (aa122-400) - Background

Cargo transport protein that is required for apical transport from the Golgi complex. Transports AQP2 from the trans- Golgi network (TGN) to sites of AQP2 phosphorylation. Mediates the non-vesicular transport of glucosylceramide (GlcCer) from the trans-Golgi network (TGN) to the plasma membrane and plays a pivotal role in the synthesis of complex glycosphingolipids. Binding of both phosphatidylinositol 4-phosphate (PIP) and ARF1 are essential for the GlcCer transfer ability. Also required for primary cilium formation, possibly by being involved in the transport of raft lipids to the apical membrane, and for membrane tubulation.

PLEKHA8 Antibody (aa122-400) - References

- Dowler S.J., et al. Biochem. J. 351:19-31(2000).
- Ota T., et al. Nat. Genet. 36:40-45(2004).
- Mural R.J., et al. Submitted (JUL-2005) to the EMBL/GenBank/DDBJ databases.
- Scanlan M.J., et al. Cancer Immun. 1:4-4(2001).
- Godi A., et al. Nat. Cell Biol. 6:393-404(2004).