

CHI3L1 / YKL-40 Antibody
Rabbit Polyclonal Antibody
Catalog # ALS17175**Specification**

CHI3L1 / YKL-40 Antibody - Product Information

Application	IHC-P, WB
Primary Accession	P36222
Other Accession	1116
Reactivity	Human, Mouse, Rat
Host	Rabbit
Clonality	Polyclonal
Isotype	IgG
Calculated MW	42625

CHI3L1 / YKL-40 Antibody - Additional Information**Gene ID** 1116**Other Names**

CHI3L1, 39 kDa synovial protein, ASRT7, Cartilage glycoprotein 39, CGP-39, Chitinase-3-like protein 1, gp39, HCGP-39, HCGP-3P, GP-39, HC-gp39, YKL40, YYL-40, YKL-40

Target/Specificity

Human CHI3L1 / YKL-40

Reconstitution & Storage

PBS, pH 7.3, 0.02% sodium azide, 50% glycerol. Long term: -80°C; Short term: -20°C. Avoid freeze-thaw cycles.

Precautions

CHI3L1 / YKL-40 Antibody is for research use only and not for use in diagnostic or therapeutic procedures.

CHI3L1 / YKL-40 Antibody - Protein Information**Name** CHI3L1**Function**

Carbohydrate-binding lectin with a preference for chitin. Has no chitinase activity. May play a role in tissue remodeling and in the capacity of cells to respond to and cope with changes in their environment. Plays a role in T-helper cell type 2 (Th2) inflammatory response and IL-13-induced inflammation, regulating allergen sensitization, inflammatory cell apoptosis, dendritic cell accumulation and M2 macrophage differentiation. Facilitates invasion of pathogenic enteric bacteria into colonic mucosa and lymphoid organs. Mediates activation of AKT1 signaling pathway and subsequent IL8 production in colonic epithelial cells. Regulates antibacterial responses in lung by contributing to macrophage bacterial killing, controlling bacterial dissemination and augmenting host tolerance. Also regulates hyperoxia- induced injury, inflammation and epithelial

apoptosis in lung.

Cellular Location

Secreted, extracellular space. Cytoplasm. Cytoplasm, perinuclear region. Endoplasmic reticulum

Tissue Location

Present in activated macrophages, articular chondrocytes, synovial cells as well as in liver. Very low or undetectable expression in non-inflammatory colon. Undetectable in muscle tissues, lung, pancreas, mononuclear cells, or fibroblasts

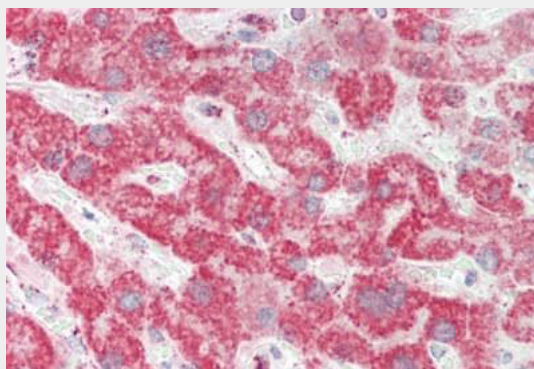
Volume

50 µl

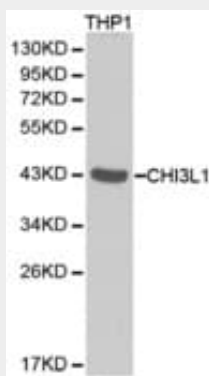
CHI3L1 / YKL-40 Antibody - Protocols

Provided below are standard protocols that you may find useful for product applications.

- [Western Blot](#)
- [Blocking Peptides](#)
- [Dot Blot](#)
- [Immunohistochemistry](#)
- [Immunofluorescence](#)
- [Immunoprecipitation](#)
- [Flow Cytometry](#)
- [Cell Culture](#)

CHI3L1 / YKL-40 Antibody - Images

Human Liver: Formalin-Fixed, Paraffin-Embedded (FFPE)



Western blot analysis of extracts of THP1 cells, using CHI3L1 antibody.

CHI3L1 / YKL-40 Antibody - Background

Carbohydrate-binding lectin with a preference for chitin. Has no chitinase activity. May play a role in tissue remodeling and in the capacity of cells to respond to and cope with changes in their environment. Plays a role in T-helper cell type 2 (Th2) inflammatory response and IL-13-induced inflammation, regulating allergen sensitization, inflammatory cell apoptosis, dendritic cell accumulation and M2 macrophage differentiation. Facilitates invasion of pathogenic enteric bacteria into colonic mucosa and lymphoid organs. Mediates activation of AKT1 signaling pathway and subsequent IL8 production in colonic epithelial cells. Regulates antibacterial responses in lung by contributing to macrophage bacterial killing, controlling bacterial dissemination and augmenting host tolerance. Also regulates hyperoxia-induced injury, inflammation and epithelial apoptosis in lung.

CHI3L1 / YKL-40 Antibody - References

- Hakala B.E.,et al.J. Biol. Chem. 268:25803-25810(1993).
Rehli M.,et al.Genomics 43:221-225(1997).
Kalnine N.,et al.Submitted (MAY-2003) to the EMBL/GenBank/DDBJ databases.
Ota T.,et al.Nat. Genet. 36:40-45(2004).
Mural R.J.,et al.Submitted (JUL-2005) to the EMBL/GenBank/DDBJ databases.