

RNASE3 Antibody (aa102-151)
Rabbit Polyclonal Antibody
Catalog # ALS17215**Specification**

RNASE3 Antibody (aa102-151) - Product Information

| | |
|-------------------|------------------------|
| Application | IHC-P, WB |
| Primary Accession | P12724 |
| Other Accession | 6037 |
| Reactivity | Human |
| Host | Rabbit |
| Clonality | Polyclonal |
| Isotype | IgG |
| Calculated MW | 18385 |

RNASE3 Antibody (aa102-151) - Additional Information**Gene ID** 6037**Other Names**

RNASE3, ECP, Ribonuclease 3, RNase 3, Cytotoxic ribonuclease, Eosinophil cationic protein, RNS3

Target/Specificity

ECP antibody detects endogenous levels of ECP.

Reconstitution & Storage

PBS, pH 7.4, 150 mM sodium chloride, 0.02% sodium azide, 50% glycerol. Store at -20°C.

Precautions

RNASE3 Antibody (aa102-151) is for research use only and not for use in diagnostic or therapeutic procedures.

RNASE3 Antibody (aa102-151) - Protein Information**Name** RNASE3**Synonyms** ECP, RNS3**Function**

Cytotoxin and helminthotoxin with low-efficiency ribonuclease activity. Possesses a wide variety of biological activities. Exhibits antibacterial activity, including cytoplasmic membrane depolarization of preferentially Gram-negative, but also Gram-positive strains. Promotes E.coli outer membrane detachment, alteration of the overall cell shape and partial loss of cell content.

Cellular Location

Secreted. Note=Located in the matrix of eosinophil large specific granule, which are released following activation by an immune stimulus

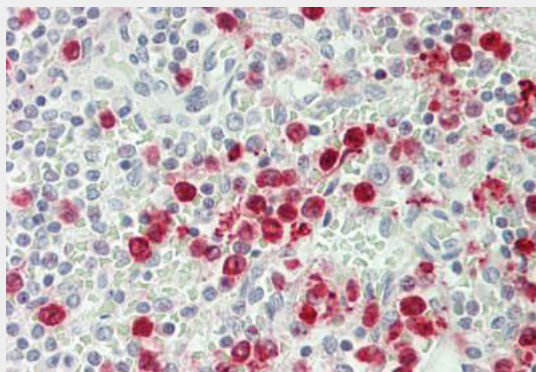
Volume
50 µl

RNASE3 Antibody (aa102-151) - Protocols

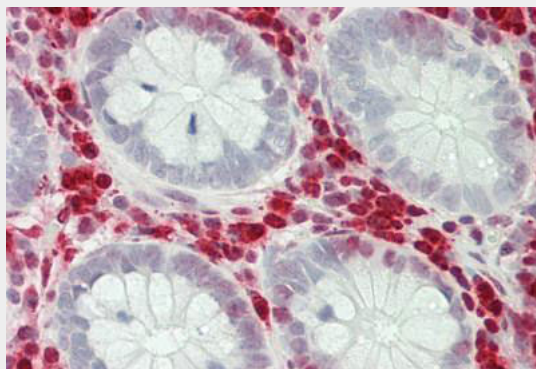
Provided below are standard protocols that you may find useful for product applications.

- [Western Blot](#)
- [Blocking Peptides](#)
- [Dot Blot](#)
- [Immunohistochemistry](#)
- [Immunofluorescence](#)
- [Immunoprecipitation](#)
- [Flow Cytometry](#)
- [Cell Culture](#)

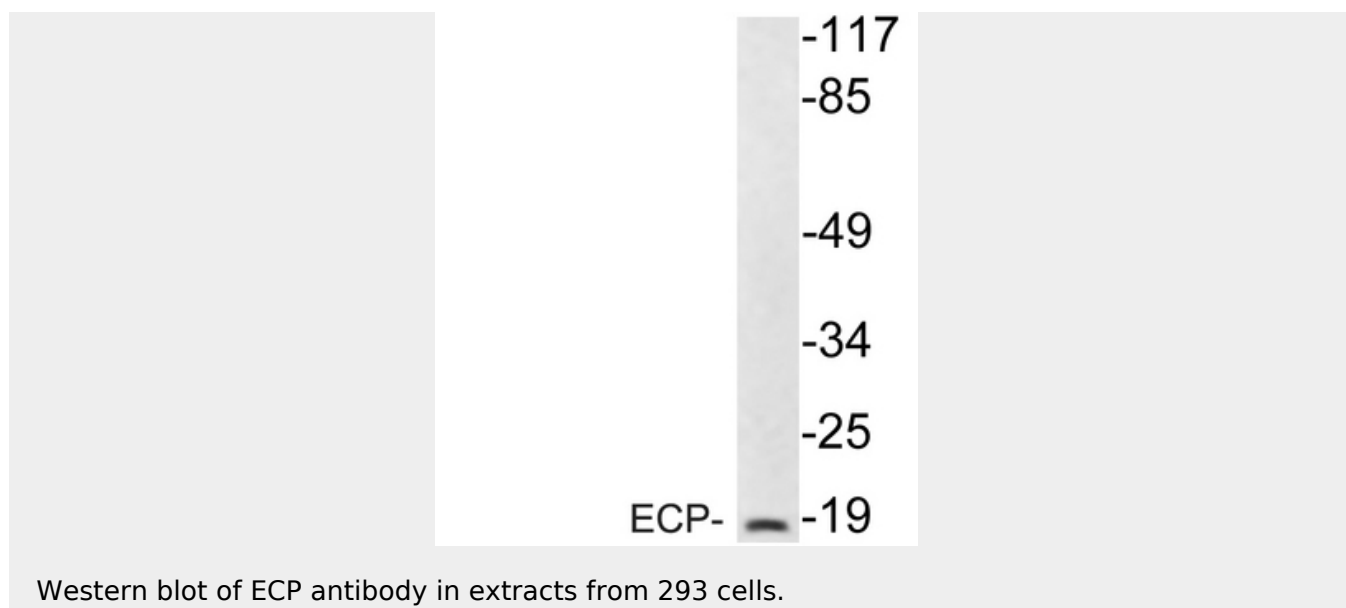
RNASE3 Antibody (aa102-151) - Images



Human Spleen: Formalin-Fixed, Paraffin-Embedded (FFPE)



Human Small Intestine: Formalin-Fixed, Paraffin-Embedded (FFPE)



RNASE3 Antibody (aa102-151) - Background

Cytotoxin and helminthotoxin with low-efficiency ribonuclease activity. Possesses a wide variety of biological activities. Exhibits antibacterial activity, including cytoplasmic membrane depolarization of preferentially Gram-negative, but also Gram-positive strains. Promotes E.coli outer membrane detachment, alteration of the overall cell shape and partial loss of cell content.

RNASE3 Antibody (aa102-151) - References

Rosenberg H.F.,et al.J. Exp. Med. 170:163-176(1989).
Hamann K.J.,et al.Genomics 7:535-546(1990).
Barker R.L.,et al.J. Immunol. 143:952-955(1989).
Simonsen C.C.,et al.Submitted (OCT-1990) to the EMBL/GenBank/DDBJ databases.
Zhang J.,et al.Genetics 156:1949-1958(2000).