

Anti-RELN / Reelin Antibody
Rabbit Anti Human Polyclonal Antibody
Catalog # ALS17266**Specification**

Anti-RELN / Reelin Antibody - Product Information

| | |
|-------------------|------------------------|
| Application | IHC-P |
| Primary Accession | P78509 |
| Predicted | Human |
| Host | Rabbit |
| Clonality | Polyclonal |
| Isotype | IgG |
| Calculated MW | 388388 |

Anti-RELN / Reelin Antibody - Additional Information**Gene ID** 5649

| | |
|---------------------------------|------|
| Alias Symbol | RELN |
| Other Names | |
| RELN, LIS2, PRO1598, Reelin, RL | |

Target/Specificity
Human RELN / Reelin**Reconstitution & Storage**

PBS, pH 7.4, 0.03% Proclin 300, 50% glycerol. Long term: -20°C; Short term: +4°C. Avoid repeat freeze-thaw cycles.

Precautions

Anti-RELN / Reelin Antibody is for research use only and not for use in diagnostic or therapeutic procedures.

Anti-RELN / Reelin Antibody - Protein Information**Name** RELN**Function**

Extracellular matrix serine protease that plays a role in layering of neurons in the cerebral cortex and cerebellum. Regulates microtubule function in neurons and neuronal migration. Affects migration of sympathetic preganglionic neurons in the spinal cord, where it seems to act as a barrier to neuronal migration. Enzymatic activity is important for the modulation of cell adhesion. Binding to the extracellular domains of lipoprotein receptors VLDLR and LRP8/APOER2 induces tyrosine phosphorylation of DAB1 and modulation of TAU phosphorylation (By similarity).

Cellular Location

Secreted, extracellular space, extracellular matrix

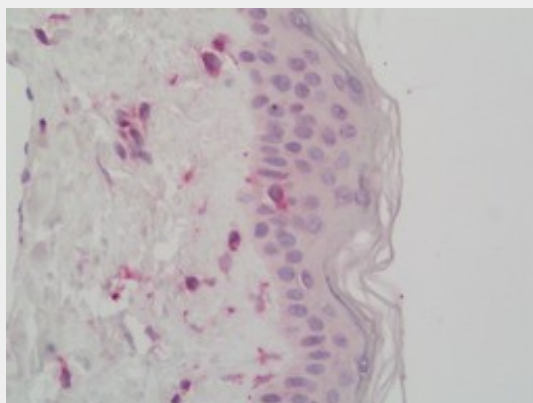
Tissue Location

Abundantly produced during brain ontogenesis by the Cajal-Retzius cells and other pioneer neurons located in the telencephalic marginal zone and by granule cells of the external granular layer of the cerebellum. In adult brain, preferentially expressed in GABAergic interneurons of prefrontal cortices, temporal cortex, hippocampus and glutamatergic granule cells of cerebellum. Expression is reduced to about 50% in patients with schizophrenia. Also expressed in fetal and adult liver.

Anti-RELN / Reelin Antibody - Protocols

Provided below are standard protocols that you may find useful for product applications.

- [Western Blot](#)
- [Blocking Peptides](#)
- [Dot Blot](#)
- [Immunohistochemistry](#)
- [Immunofluorescence](#)
- [Immunoprecipitation](#)
- [Flow Cytometry](#)
- [Cell Culture](#)

Anti-RELN / Reelin Antibody - Images

Human Skin: Formalin-Fixed, Paraffin-Embedded (FFPE)