

Anti-HLA-DPB1 Antibody
Rabbit Anti Human Polyclonal Antibody
Catalog # ALS17272**Specification**

Anti-HLA-DPB1 Antibody - Product Information

| | |
|-------------------|------------------------|
| Application | IHC-P |
| Primary Accession | P04440 |
| Predicted | Human |
| Host | Rabbit |
| Clonality | Polyclonal |
| Isotype | IgG |
| Calculated MW | 29159 |

Anti-HLA-DPB1 Antibody - Additional Information**Gene ID** 3115

| | |
|--------------|----------|
| Alias Symbol | HLA-DPB1 |
|--------------|----------|

Other Names

HLA-DPB1, Class II HLA beta chain, HLA-DP1B, MHC class II antigen DPbeta1, MHC class II antigen DPB1, MHC class II HLA-DRB1, MHC HLA DPB1, HLA-DPB, MHC class II HLA-DP-beta-1, DPB1, HLA DP14-beta chain, MHC class II HLA-DP-beta

Target/Specificity

Human HLA-DPB1

Reconstitution & Storage

PBS, pH 7.4, 0.03% Proclin 300, 50% glycerol. Long term: -20°C; Short term: +4°C. Avoid repeat freeze-thaw cycles.

Precautions

Anti-HLA-DPB1 Antibody is for research use only and not for use in diagnostic or therapeutic procedures.

Anti-HLA-DPB1 Antibody - Protein Information

Name HLA-DPB1

Synonyms HLA-DP1B

Function

Binds peptides derived from antigens that access the endocytic route of antigen presenting cells (APC) and presents them on the cell surface for recognition by the CD4 T-cells. The peptide binding cleft accommodates peptides of 10-30 residues. The peptides presented by MHC class II molecules are generated mostly by degradation of proteins that access the endocytic route, where they are processed by lysosomal proteases and other hydrolases. Exogenous antigens that have been endocytosed by the APC are thus readily available for presentation via MHC II molecules, and

for this reason this antigen presentation pathway is usually referred to as exogenous. As membrane proteins on their way to degradation in lysosomes as part of their normal turn-over are also contained in the endosomal/lysosomal compartments, exogenous antigens must compete with those derived from endogenous components. Autophagy is also a source of endogenous peptides, autophagosomes constitutively fuse with MHC class II loading compartments. In addition to APCs, other cells of the gastrointestinal tract, such as epithelial cells, express MHC class II molecules and CD74 and act as APCs, which is an unusual trait of the GI tract. To produce a MHC class II molecule that presents an antigen, three MHC class II molecules (heterodimers of an alpha and a beta chain) associate with a CD74 trimer in the ER to form a heterononamer. Soon after the entry of this complex into the endosomal/lysosomal system where antigen processing occurs, CD74 undergoes a sequential degradation by various proteases, including CTSS and CTSL, leaving a small fragment termed CLIP (class-II-associated invariant chain peptide). The removal of CLIP is facilitated by HLA-DM via direct binding to the alpha-beta-CLIP complex so that CLIP is released. HLA-DM stabilizes MHC class II molecules until primary high affinity antigenic peptides are bound. The MHC II molecule bound to a peptide is then transported to the cell membrane surface. In B-cells, the interaction between HLA-DM and MHC class II molecules is regulated by HLA-DO. Primary dendritic cells (DCs) also to express HLA-DO. Lysosomal microenvironment has been implicated in the regulation of antigen loading into MHC II molecules, increased acidification produces increased proteolysis and efficient peptide loading.

Cellular Location

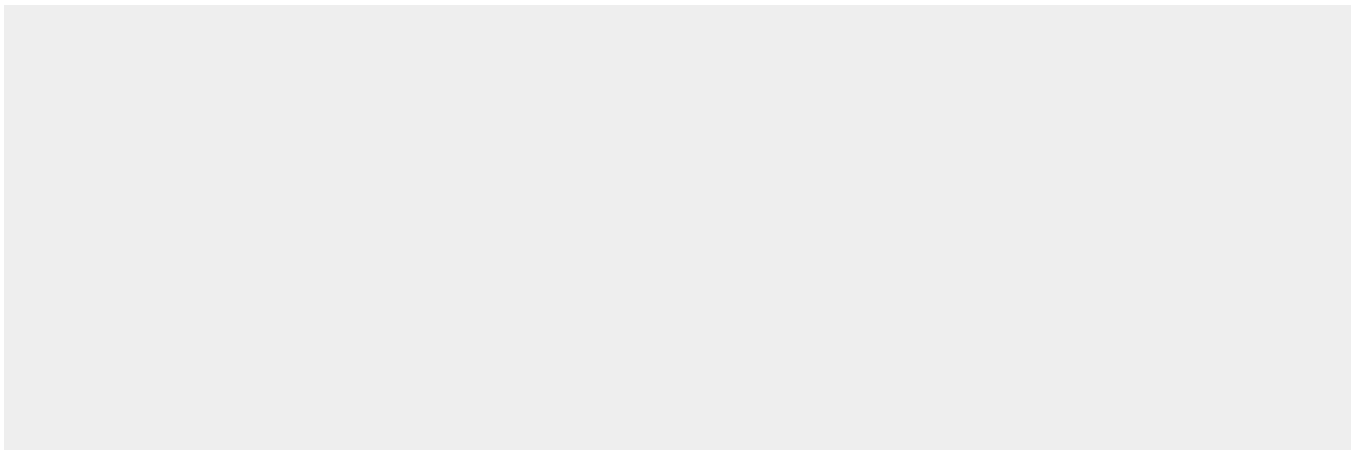
Cell membrane; Single-pass type I membrane protein. Endoplasmic reticulum membrane; Single-pass type I membrane protein. Golgi apparatus, trans-Golgi network membrane; Single-pass type I membrane protein. Endosome membrane; Single-pass type I membrane protein. Lysosome membrane; Single-pass type I membrane protein Note=The MHC class II complex transits through a number of intracellular compartments in the endocytic pathway until it reaches the cell membrane for antigen presentation

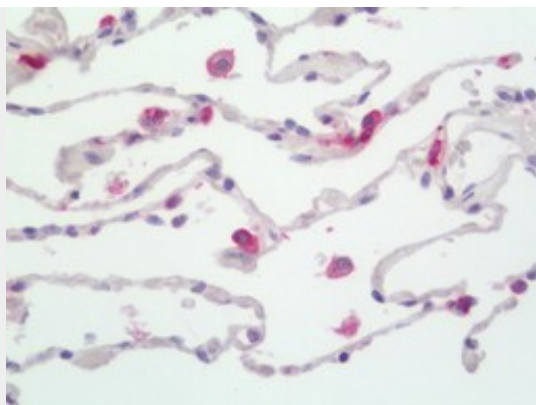
Anti-HLA-DPB1 Antibody - Protocols

Provided below are standard protocols that you may find useful for product applications.

- [Western Blot](#)
- [Blocking Peptides](#)
- [Dot Blot](#)
- [Immunohistochemistry](#)
- [Immunofluorescence](#)
- [Immunoprecipitation](#)
- [Flow Cytometry](#)
- [Cell Culture](#)

Anti-HLA-DPB1 Antibody - Images





Human Lung: Formalin-Fixed, Paraffin-Embedded (FFPE)