

**Anti-HSPA6 / HSP70B' Antibody**  
**Rabbit Anti Human Polyclonal Antibody**  
**Catalog # ALS17281****Specification**

---

**Anti-HSPA6 / HSP70B' Antibody - Product Information**

Application	IHC-P
Primary Accession	<a href="#">P17066</a>
Predicted	Human
Host	Rabbit
Clonality	Polyclonal
Isotype	IgG
Calculated MW	71028

**Anti-HSPA6 / HSP70B' Antibody - Additional Information****Gene ID** 3310**Alias Symbol** **HSPA6****Other Names**

HSPA6, Heat shock 70 kd protein b, Heat shock 70 kDa protein 6, Heat shock 70 kDa protein B, Heat shock 70 kd protein 7, HSP70B

**Target/Specificity**

Human HSPA6

**Reconstitution & Storage**

PBS, pH 7.4, 0.03% Proclin 300, 50% glycerol. Long term: -20°C; Short term: +4°C. Avoid repeat freeze-thaw cycles.

**Precautions**

Anti-HSPA6 / HSP70B' Antibody is for research use only and not for use in diagnostic or therapeutic procedures.

**Anti-HSPA6 / HSP70B' Antibody - Protein Information****Name** HSPA6**Synonyms** HSP70B'**Function**

Molecular chaperone implicated in a wide variety of cellular processes, including protection of the proteome from stress, folding and transport of newly synthesized polypeptides, activation of proteolysis of misfolded proteins and the formation and dissociation of protein complexes. Plays a pivotal role in the protein quality control system, ensuring the correct folding of proteins, the re-folding of misfolded proteins and controlling the targeting of proteins for subsequent degradation. This is achieved through cycles of ATP binding, ATP hydrolysis and ADP release, mediated by co-chaperones. The affinity for polypeptides is regulated by its nucleotide bound

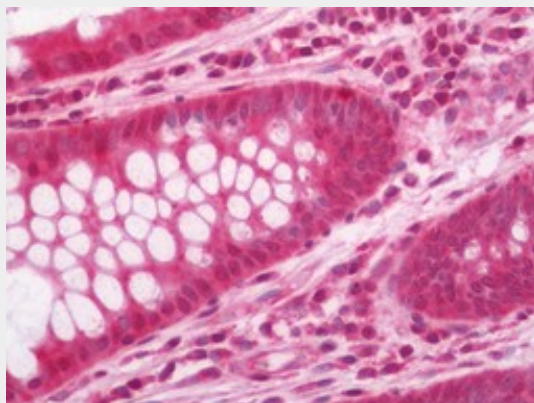
state. In the ATP-bound form, it has a low affinity for substrate proteins. However, upon hydrolysis of the ATP to ADP, it undergoes a conformational change that increases its affinity for substrate proteins. It goes through repeated cycles of ATP hydrolysis and nucleotide exchange, which permits cycles of substrate binding and release (PubMed:<a href="http://www.uniprot.org/citations/26865365" target="\_blank">26865365</a>).

### **Anti-HSPA6 / HSP70B' Antibody - Protocols**

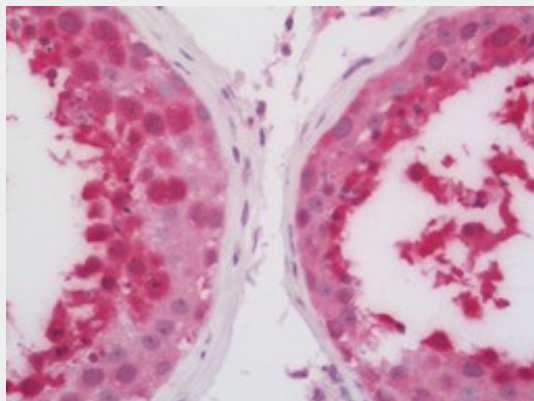
Provided below are standard protocols that you may find useful for product applications.

- [Western Blot](#)
- [Blocking Peptides](#)
- [Dot Blot](#)
- [Immunohistochemistry](#)
- [Immunofluorescence](#)
- [Immunoprecipitation](#)
- [Flow Cytometry](#)
- [Cell Culture](#)

### **Anti-HSPA6 / HSP70B' Antibody - Images**



Human Colon: Formalin-Fixed, Paraffin-Embedded (FFPE)



Human Testis: Formalin-Fixed, Paraffin-Embedded (FFPE)