

**Anti-IL12A / p35 Antibody (C-Terminus)**  
**Rabbit Anti Human Polyclonal Antibody**  
**Catalog # ALS17301****Specification**

---

**Anti-IL12A / p35 Antibody (C-Terminus) - Product Information**

|                   |                        |
|-------------------|------------------------|
| Application       | <b>IHC-P</b>           |
| Primary Accession | <a href="#">P29459</a> |
| Predicted         | <b>Human</b>           |
| Host              | <b>Rabbit</b>          |
| Clonality         | <b>Polyclonal</b>      |
| Isotype           | <b>IgG</b>             |
| Calculated MW     | <b>24874</b>           |

**Anti-IL12A / p35 Antibody (C-Terminus) - Additional Information****Gene ID** 3592**Alias Symbol** **IL12A****Other Names**

IL12A, CLMF p35, IL-12, subunit p35, IL-12A, Interleukin-12 alpha chain, NFSK, p35, Interleukin-12 subunit alpha, NKSF1, CLMF, IL-12 subunit p35, IL35 subunit, Interleukin 12, p35

**Target/Specificity**

IL-12A antibody is human specific. IL-12A antibody will not cross-react with IL-12B.

**Reconstitution & Storage**

PBS, 0.02% sodium azide. Store at 4°C for three months and -20°C, stable for up to one year. Avoid repeated freeze thaw cycles.

**Precautions**

Anti-IL12A / p35 Antibody (C-Terminus) is for research use only and not for use in diagnostic or therapeutic procedures.

**Anti-IL12A / p35 Antibody (C-Terminus) - Protein Information****Name** IL12A**Synonyms** NKSF1**Function**

Heterodimerizes with IL12B to form the IL-12 cytokine or with EBI3/IL27B to form the IL-35 cytokine (PubMed: [8605935](http://www.uniprot.org/citations/8605935), PubMed: [8943050](http://www.uniprot.org/citations/8943050)). IL-12 is primarily produced by professional antigen-presenting cells (APCs) such as B-cells and dendritic cells (DCs) as well as macrophages and granulocytes and regulates T-cell and natural killer-cell responses, induces the production of interferon-gamma (IFN-gamma), favors the differentiation of T-helper 1 (Th1) cells and is an important link between

innate resistance and adaptive immunity (PubMed:<a href="http://www.uniprot.org/citations/1673147" target="\_blank">1673147</a>, PubMed:<a href="http://www.uniprot.org/citations/1674604" target="\_blank">1674604</a>, PubMed:<a href="http://www.uniprot.org/citations/8605935" target="\_blank">8605935</a>). Mechanistically, exerts its biological effects through a receptor composed of IL12R1 and IL12R2 subunits (PubMed:<a href="http://www.uniprot.org/citations/8943050" target="\_blank">8943050</a>). Binding to the receptor results in the rapid tyrosine phosphorylation of a number of cellular substrates including the JAK family kinases TYK2 and JAK2 (PubMed:<a href="http://www.uniprot.org/citations/7528775" target="\_blank">7528775</a>). In turn, recruited STAT4 gets phosphorylated and translocates to the nucleus where it regulates cytokine/growth factor responsive genes (PubMed:<a href="http://www.uniprot.org/citations/7638186" target="\_blank">7638186</a>). As part of IL-35, plays essential roles in maintaining the immune homeostasis of the liver microenvironment and also functions as an immune-suppressive cytokine (By similarity). Mediates biological events through unconventional receptors composed of IL12RB2 and gp130/IL6ST heterodimers or homodimers (PubMed:<a href="http://www.uniprot.org/citations/22306691" target="\_blank">22306691</a>). Signaling requires the transcription factors STAT1 and STAT4, which form a unique heterodimer that binds to distinct DNA sites (PubMed:<a href="http://www.uniprot.org/citations/22306691" target="\_blank">22306691</a>).

#### **Cellular Location**

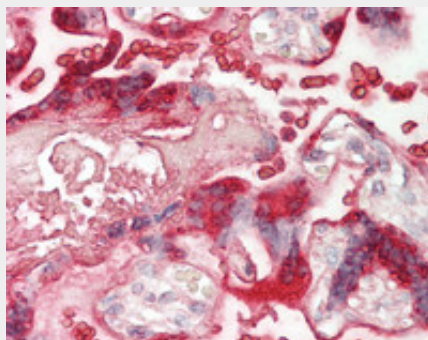
Secreted

#### **Anti-IL12A / p35 Antibody (C-Terminus) - Protocols**

Provided below are standard protocols that you may find useful for product applications.

- [Western Blot](#)
- [Blocking Peptides](#)
- [Dot Blot](#)
- [Immunohistochemistry](#)
- [Immunofluorescence](#)
- [Immunoprecipitation](#)
- [Flow Cytometry](#)
- [Cell Culture](#)

#### **Anti-IL12A / p35 Antibody (C-Terminus) - Images**



Human Placenta: Formalin-Fixed, Paraffin-Embedded (FFPE)