

Anti-SUSD3 Antibody
Rabbit Anti Human Polyclonal Antibody
Catalog # ALS17310**Specification**

Anti-SUSD3 Antibody - Product Information

Application	IHC-P
Primary Accession	Q96L08
Predicted	Human, Mouse
Host	Rabbit
Clonality	Polyclonal
Isotype	IgG
Calculated MW	27119

Anti-SUSD3 Antibody - Additional Information**Gene ID** 203328

Alias Symbol	SUSD3
Other Names	
SUSD3, Sushi domain containing 3	

Target/Specificity

SUSD3 antibody is human and mouse reactive. Multiple isoforms of SUSD3 are known to exist.

Reconstitution & Storage

PBS, 0.02% sodium azide. Store at 4°C for three months and -20°C, stable for up to one year. Avoid repeated freeze thaw cycles.

Precautions

Anti-SUSD3 Antibody is for research use only and not for use in diagnostic or therapeutic procedures.

Anti-SUSD3 Antibody - Protein Information**Name** SUSD3**Function**

May play a role in breast tumorigenesis by promoting estrogen-dependent cell proliferation, cell-cell interactions and migration.

Cellular Location

Cell membrane; Single-pass membrane protein. Note=Prominently localized to cell-cell borders.

Tissue Location

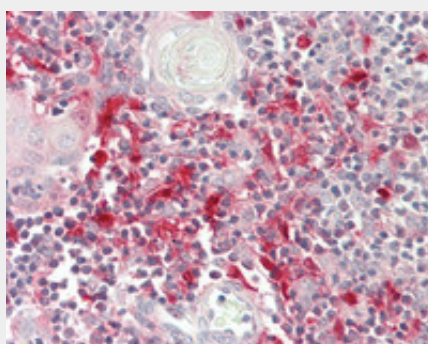
Highly expressed in estrogen receptor-positive breast tumors.

Anti-SUSD3 Antibody - Protocols

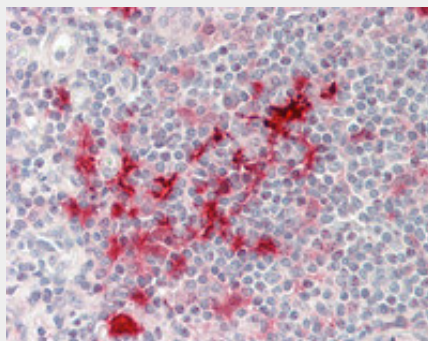
Provided below are standard protocols that you may find useful for product applications.

- [Western Blot](#)
- [Blocking Peptides](#)
- [Dot Blot](#)
- [Immunohistochemistry](#)
- [Immunofluorescence](#)
- [Immunoprecipitation](#)
- [Flow Cytometry](#)
- [Cell Culture](#)

Anti-SUSD3 Antibody - Images



Human Thymus: Formalin-Fixed, Paraffin-Embedded (FFPE)



Human Tonsil: Formalin-Fixed, Paraffin-Embedded (FFPE)