

Anti-ASGR2 Antibody (aa106-286)
Rabbit Anti Human Polyclonal Antibody
Catalog # ALS17311**Specification**

Anti-ASGR2 Antibody (aa106-286) - Product Information

Application	IHC-P
Primary Accession	P07307
Predicted	Human
Host	Rabbit
Clonality	Polyclonal
Calculated MW	35092

Anti-ASGR2 Antibody (aa106-286) - Additional Information**Gene ID** 433**Alias Symbol** **ASGR2**
Other Names

ASGR2, ASGPR2, Asialoglycoprotein receptors 2, ASGP-R 2, ASGPR 2, ASGP-R2, Asialoglycoprotein receptor 2, CLEC4H2, Hepatic lectin H2, HL-2, HBxAg-binding protein, HBXBP

Target/Specificity
Human ASGR2**Reconstitution & Storage**

PBS, pH 7.4, 0.02% sodium azide. Short term 4°C, long term aliquot and store at -20°C, avoid freeze thaw cycles. Store undiluted.

Precautions

Anti-ASGR2 Antibody (aa106-286) is for research use only and not for use in diagnostic or therapeutic procedures.

Anti-ASGR2 Antibody (aa106-286) - Protein Information**Name** ASGR2**Synonyms** CLEC4H2**Function**

Mediates the endocytosis of plasma glycoproteins to which the terminal sialic acid residue on their complex carbohydrate moieties has been removed. The receptor recognizes terminal galactose and N- acetylgalactosamine units. After ligand binding to the receptor, the resulting complex is internalized and transported to a sorting organelle, where receptor and ligand are disassociated. The receptor then returns to the cell membrane surface.

Cellular Location

Membrane; Single-pass type II membrane protein.

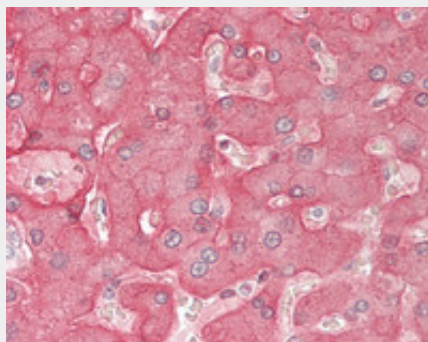
Tissue Location

Expressed exclusively in hepatic parenchymal cells.

Anti-ASGR2 Antibody (aa106-286) - Protocols

Provided below are standard protocols that you may find useful for product applications.

- [Western Blot](#)
- [Blocking Peptides](#)
- [Dot Blot](#)
- [Immunohistochemistry](#)
- [Immunofluorescence](#)
- [Immunoprecipitation](#)
- [Flow Cytometry](#)
- [Cell Culture](#)

Anti-ASGR2 Antibody (aa106-286) - Images

Human Liver: Formalin-Fixed, Paraffin-Embedded (FFPE)