

Anti-SERPING1 / C1 Inhibitor Antibody (clone KT28)
Mouse Anti Human Monoclonal Antibody
Catalog # ALS17315**Specification**

Anti-SERPING1 / C1 Inhibitor Antibody (clone KT28) - Product Information

Application	IHC-P
Primary Accession	P05155
Predicted	Human
Host	Mouse
Clonality	Monoclonal
Isotype	IgG1
Calculated MW	55154

Anti-SERPING1 / C1 Inhibitor Antibody (clone KT28) - Additional Information**Gene ID 710**Alias Symbol **SERPING1****Other Names**

SERPING1, C1-inhibiting factor, C1IN, C1 Inh, C1-INH, C1INH, C1INH, C1 Inhibitor, HAE1, HAE2, Plasma protease C1 inhibitor, C1 esterase inhibitor, Serpin G1

Target/Specificity

Human SERPING1/C1INH/C1 Inhibitor

Reconstitution & Storage

PBS, 0.09% sodium azide Short term 4°C, long term aliquot and store at -20°C, avoid freeze thaw cycles.

Precautions

Anti-SERPING1 / C1 Inhibitor Antibody (clone KT28) is for research use only and not for use in diagnostic or therapeutic procedures.

Anti-SERPING1 / C1 Inhibitor Antibody (clone KT28) - Protein Information**Name** SERPING1**Synonyms** C1IN, C1NH**Function**

Activation of the C1 complex is under control of the C1- inhibitor. It forms a proteolytically inactive stoichiometric complex with the C1r or C1s proteases. May play a potentially crucial role in regulating important physiological pathways including complement activation, blood coagulation, fibrinolysis and the generation of kinins. Very efficient inhibitor of FXIIa. Inhibits chymotrypsin and kallikrein.

Cellular Location

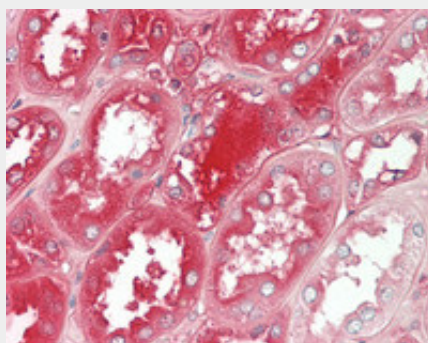
Secreted.

Anti-SERPING1 / C1 Inhibitor Antibody (clone KT28) - Protocols

Provided below are standard protocols that you may find useful for product applications.

- [Western Blot](#)
- [Blocking Peptides](#)
- [Dot Blot](#)
- [Immunohistochemistry](#)
- [Immunofluorescence](#)
- [Immunoprecipitation](#)
- [Flow Cytometry](#)
- [Cell Culture](#)

Anti-SERPING1 / C1 Inhibitor Antibody (clone KT28) - Images



Human Kidney: Formalin-Fixed, Paraffin-Embedded (FFPE)